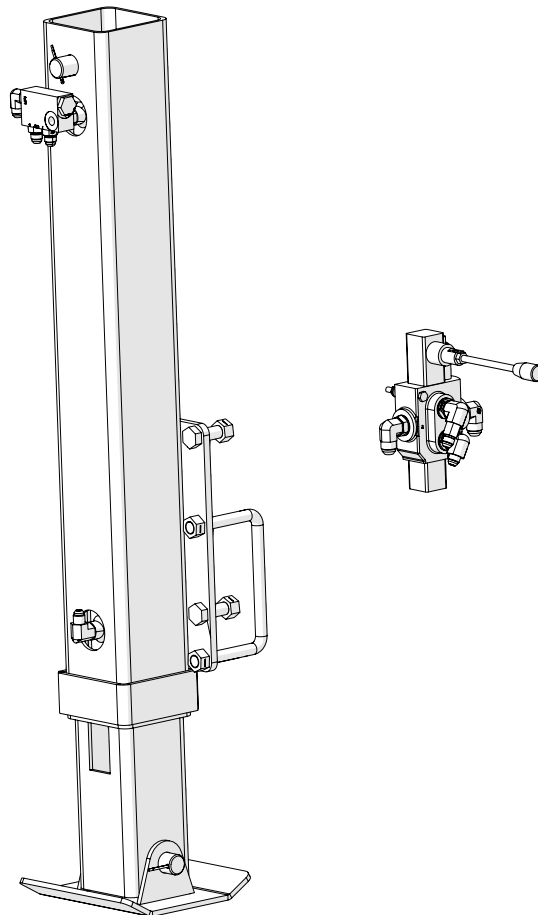




Manual

HYDRAULIC JACK

SERVICE AND INSTALLATION MANUAL



Rev. 9.9.2024

J&M Manufacturing Co, Inc

284 Railroad Street - P.O. Box 547 | Fort Recovery, OH 45846 | Ph: (419) 375-2376 | Fax: (419) 375-2708

www.jm-inc.com



Table Of Contents

4	General Information
4	Bolt Torque Chart
5	Safety Rules
Repair Parts List and Diagrams	
6	Hydraulic Jack
8	Mounting the Jack
9	Mount the Control Valve
10	Hose Setup for All Valves Except Blue
11	Set Up Instructions for Blue Valve
13	Final Steps and Testing

General Information

TO THE OWNER:

The purpose of this manual is to assist you in operating and maintaining your seed tender in a safe manner. Read it carefully. It furnishes information and instructions that will help you achieve years of dependable performance and help maintain safe operating conditions. If this machine is used by an employee or is loaned or rented, make certain that the operator(s), prior to operating:

1. Is instructed in safe and proper use.
2. Reviews and understands the manual(s) pertaining to this machine.

Throughout this manual, the term **IMPORTANT** is used to indicate that failure to observe can cause damage to equipment. The terms **CAUTION**, **WARNING** and **DANGER** are used in conjunction with the Safety-Alert Symbol, (a triangle with an exclamation mark), to indicate the degree of hazard for items of personal safety. When you see this symbol, carefully read the message that follows and be alert to the possibility of personal injury or death.



This Safety-Alert symbol indicates a hazard and means **ATTENTION! BECOME ALERT! YOUR SAFETY IS INVOLVED!**



DANGER

Indicates an imminently hazardous situation that, if not avoided, will result in death or serious injury.



WARNING

Indicates a potentially hazardous situation that, if not avoided, could result in death or serious injury, and includes hazards that are exposed when guards are removed.



CAUTION

Indicates a potentially hazardous situation that, if not avoided, may result in minor or moderate injury.

IMPORTANT

Indicates that failure to observe can cause damage to equipment.

Bolt Torque Chart

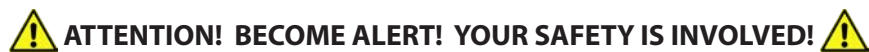
Always tighten hardware to these values unless a different torque or tightening procedure is listed for specific application. Fasteners must always be replaced with the same grade as specified in the manual parts list. Always use the proper tool for tightening hardware. Make sure fastener threads are clean and you start thread engagement properly. **Use these values when tightening all bolts and nuts with the exception of wheel nuts.**

SAE Fasteners

Coarse Thread Series				
	Grade 5		Grade 8	
<i>Diameter and Pitch (Inches)</i>	<i>Dry</i>	<i>Oiled</i>	<i>Dry</i>	<i>Oiled</i>
1/4"-20	8 ft-lbs	6 ft-lbs	12 ft-lbs	9 ft-lbs
5/16"-18	17	13	25	18
3/8"-16	31	23	44	33
7/16"-14	49	37	70	52
1/2"-13	75	57	106	80
9/16"-12	109	82	154	115
5/8"-11	150	113	212	159
3/4"-10	267	200	376	282
7/8"-9	429	322	606	455
1"-8	644	483	909	681
Fine Thread Series				
<i>Diameter and Pitch (Inches)</i>	<i>Dry</i>	<i>Oiled</i>	<i>Dry</i>	<i>Oiled</i>
1/4"-28	10 ft-lbs	7 ft-lbs	14 ft-lbs	10 ft-lbs
5/16"-24	19	15	27	20
3/8"-24	35	26	49	37
7/16"-20	55	41	78	58
1/2"-20	85	64	120	90
9/16"-18	121	91	171	128
5/8"-18	170	127	240	180
3/4"-16	297	223	420	315
7/8"-14	474	355	669	502



Safety Rules



Safety is a primary concern in the design and manufacture of our products. Unfortunately, our efforts to provide safe equipment can be erased by an operator's single careless act. In addition, hazard control and accident prevention are dependent upon the awareness, concern, judgment, and proper training of personnel involved in the operation, transport, maintenance and storage of equipment.

Make certain that the operator(s), prior to operating is instructed in safe and proper use and reviews and understands the manual(s) pertaining to this machine. Read this manual before you operate this machine. If you do not understand any part of this manual, or need more information, contact the manufacturer or your authorized dealer.



Understand that your safety and the safety of other persons is measured by how you service, and operate this machine. Know the positions and functions of all controls before you try to operate them. Make sure to check all controls in a safe area before starting your work.

The safety information given in this manual does not replace safety codes, federal, state or local laws. Make certain your machine has the proper equipment as designated by local laws and regulations.

Keep all safety shields in place.

Keep hands, feet, hair and clothing away from moving parts while unit is in operation.

Ensure that everyone is clear of equipment before operating the jack.

Avoid high pressure fluids. Escaping fluid under pressure can penetrate the skin causing serious injury. Always relieve pressure before disconnecting hydraulic lines. Wear proper hand and eye protection when searching for leaks. Use wood or cardboard instead of hands. Keep all components in good repair.

Repair Parts List and Diagrams

When performing maintenance work, wear sturdy, rough-soled work shoes and protective equipment for eyes, hair, hands, hearing and head. Follow the Operator's Manual instructions to ensure safe and proper maintenance and repair.

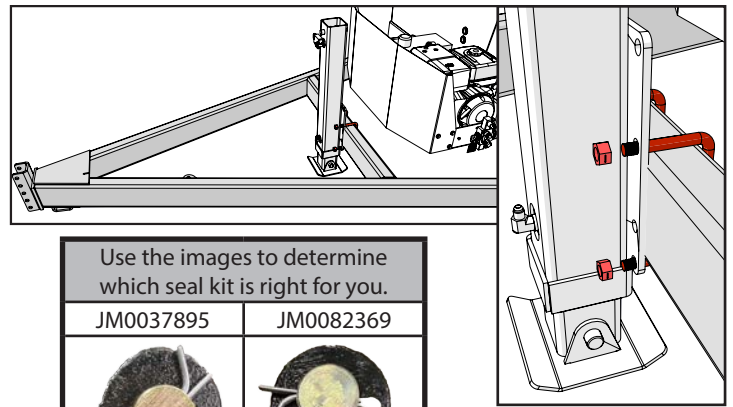
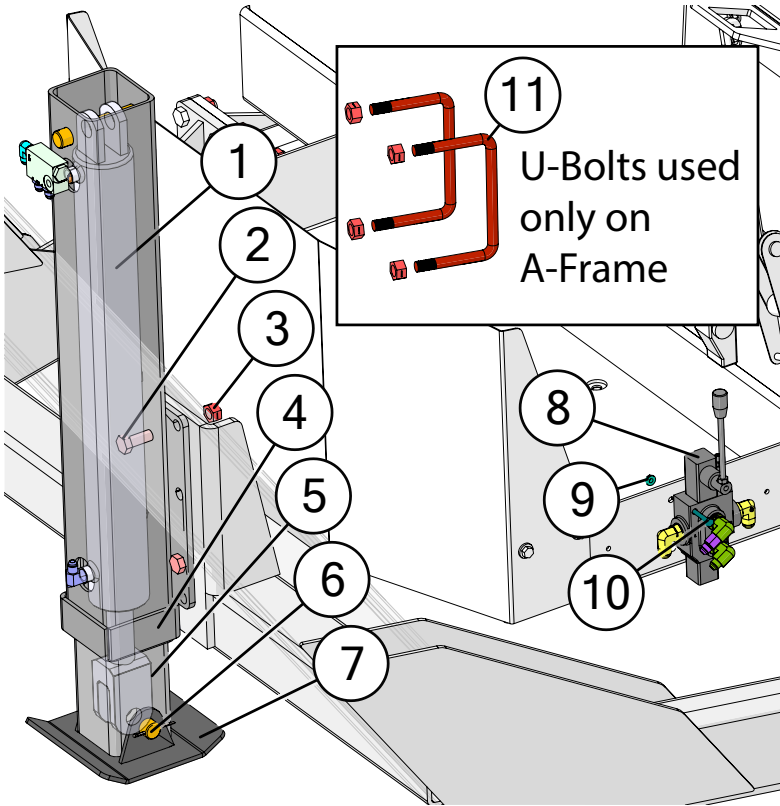
Your local, authorized dealer can supply genuine replacement parts. Substitute parts may not meet original equipment specifications and may be dangerous.

WARNING

MAKE SURE ALL POWER IS SHUT OFF BEFORE PERFORMING ANY MAINTENANCE OR REPAIR WORK.



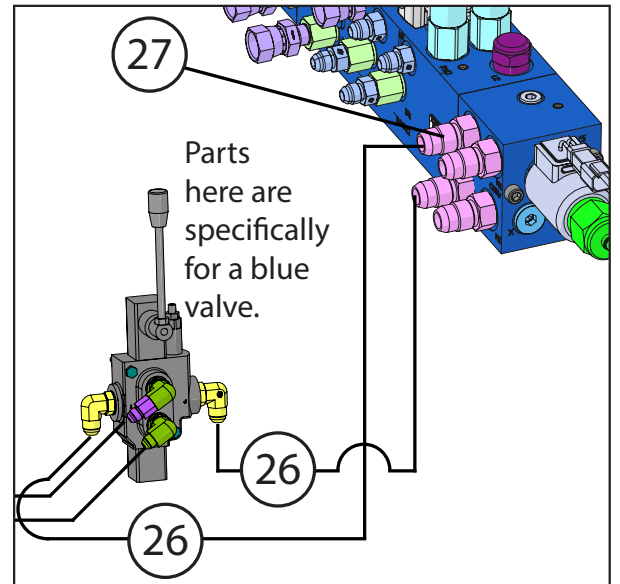
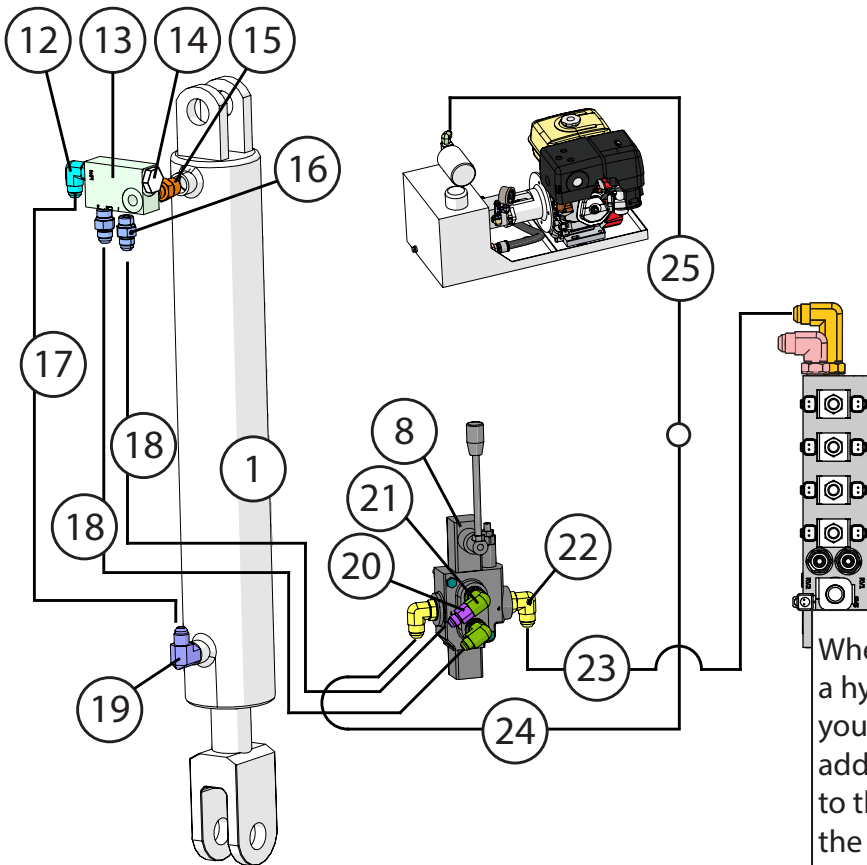
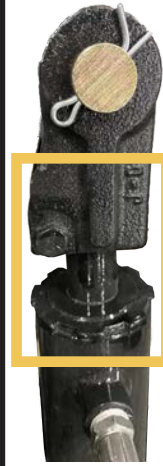
Hydraulic Jack



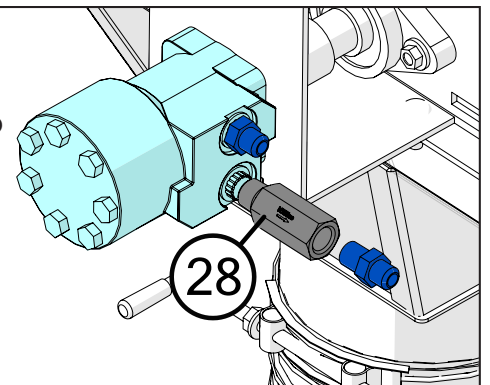
Use the images to determine which seal kit is right for you.

JM0037895

JM0082369



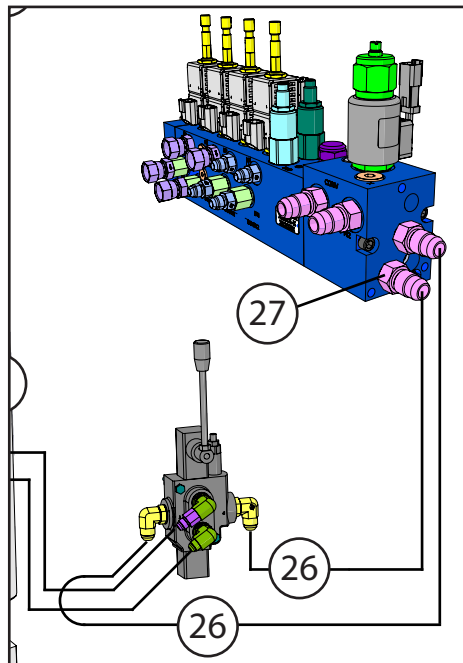
When installing a hydraulic jack you will need to add this valve to the end of the conveyor as shown in the image to the right.



Hydraulic Jack

	Description	Part No.
1	3" x 24" x 1-1/2" Welded Cylinder (JD324)	JM0019644
1	Seal Kit 3" x 24" Cylinder (JD324-1) (JD480)	JM0037895
1	Seal Kit for 3" x 24" Hydraulic Cylinder (30024-SK)	JM0082369
2	5/8"-11 x 1-1/2" Gr5 Z Hex Bolt	JM0002103
3	5/8"-11 Gr2 Z Centerlock Hex Nut	JM0002146
4	Outside Tube Weldment (Hydraulic Jack)	JM0074387
5	4" x 4" x 3/16" Inner Tube (Hydraulic Jack)	JM0061831
6	1" x 6" Pin	JM0031495
7	Foot Pad Weldment (Hydraulic Jack)	JM0074390
8	Hydraulic Jack Hand Valve with Pressure Relief (Youli MB2)	JM0031858
9	1/4"-20 Gr5 Z SF Hex Nut	JM0001630
10	1/4"-20 x 2-1/2" Gr5 Z Hex Bolt	JM0001506
11	5/8"-11 x 6-1/16" x 4-1/16" Square U-Bolt	JM0074246
12	3/8" Male JIC x 3/8" Male ORB; 90 Degree Elbow	JM0026121
13	Serviceable Pilot Check Valve	JM0061684
14	Check Valve Cartridge (CPB25)	JM0074412
15	3/8" Male NPT x 3/8" Male ORB; Straight	JM0061726
16	3/8" Male JIC x 3/8" Male ORB; Straight	JM0043614
17	3/8" x 25" Hydraulic Hose 25inch6M3K-6G-6FJX-6G-6FJX	JM0049162
18	3/8" x 68" Hydraulic Hose 68inch6M3K-6G-6FJX-6G-6FJX	JM0073253
19	3/8" Male NPT x 3/8" Male JIC; 90 Degree Elbow	JM0061728
20	3/8" Male JIC x 3/8" Female JIC with .047 Orifice	JM0054918
21	3/8" Male JIC x 1/2" Male ORB; 90 Degree Elbow	JM0037159
22	1/2" Male JIC x 1/2" Male ORB; 90 Degree Elbow	JM0010297
23	1/2" x 68" Hydraulic Hose 68inch8M3K-8G-8FJX-8G-8FJX	JM0073262
24	1/2" x 34" Hydraulic Hose 34inch8M3K-8G-8FJX-8G-8FJX	JM0073263
25	1/2" x 34" Hydraulic Hose 34inch8M3k-8G-8FJX-8G-8FJX	JM0025347
26	1/2" x 43" Crimped Hydraulic Hose - 43inch8CR2-8G-8FJX-8G-8FJX	JM0083304
27	1/2" Male JIC x 1/2" Male O-ring; Straight	JM0010293
28	Vonberg Ball Style Check Valve - 10101-504	JM0085658

2025 and newer valve bank may have the orientation shown to the right. Parts are the same.



Mounting the Jack

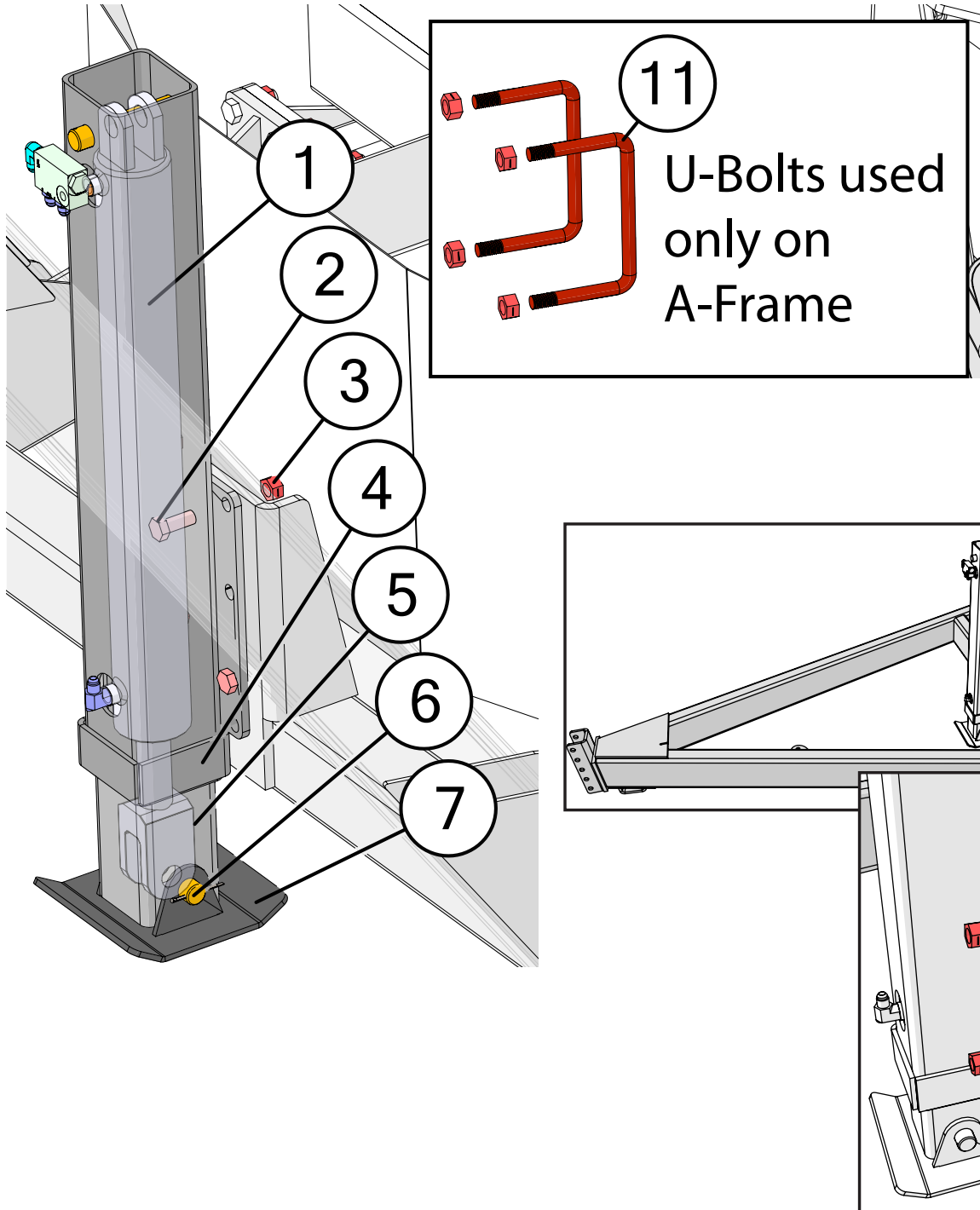
Attach Hydraulic Jack to SpeedTender

Gooseneck

- Use (4) 5/8" x 1-1/2" hex bolts and (4) 5/8" centerlock hex nuts to fasten jack to mounting bracket.
- Tighten hardware.

A-Frame

- Use (2) 5/8"-11 x 6-1/16" x 4-1/16" Square U-Bolt and (2) 5/8" centerlock hex nuts to fasten jack to side of A-Frame leg.
- Tighten hardware.

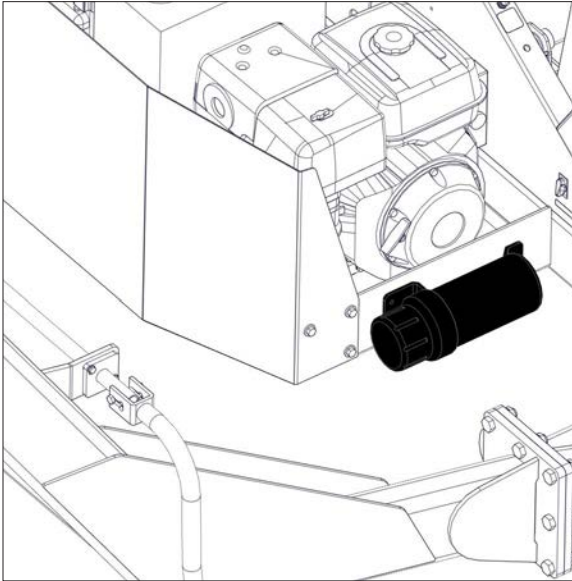


Mount the Control Valve

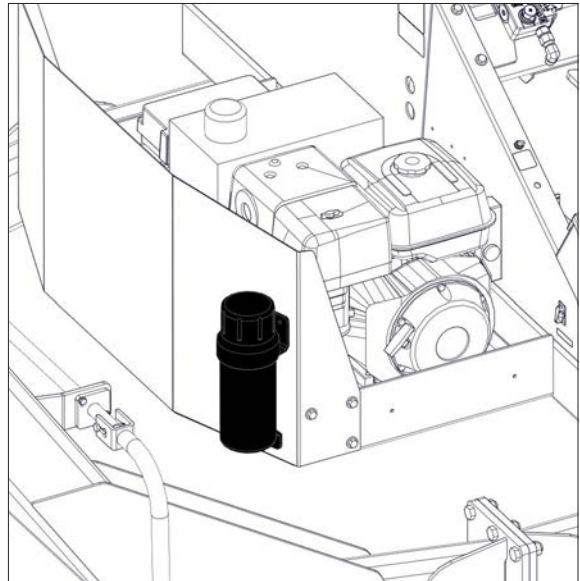
Move the Manual Canister

- Remove both 1/4" x 1" hex bolts and hex nuts which fasten the manual canister to the SpeedTender.
- Use the manual canister as guide and mark two points on the engine cover. Drill (2) 5/16" holes using the points as guides.
- Mount the manual canister on the engine cover using the same (2) 1/4" x 1" hex bolts and nuts.
- Tighten hardware.

Before

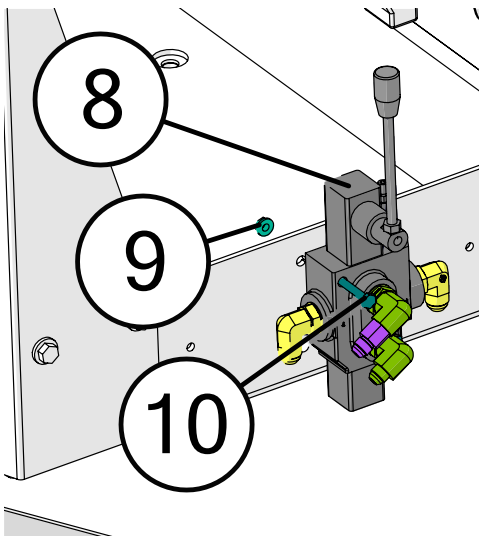


After

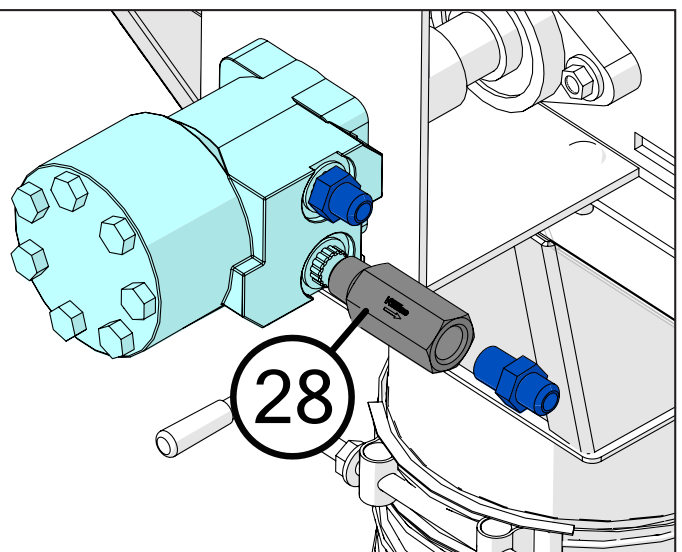


Mount the Hydraulic Jack Control Valve

- Attach the valve control using (2) 1/4" x 2-1/2" hex bolts and (2) 1/4" SF hex nuts.
- Tighten hardware.



Add this valve to the end of the conveyor as shown in the image to the right.

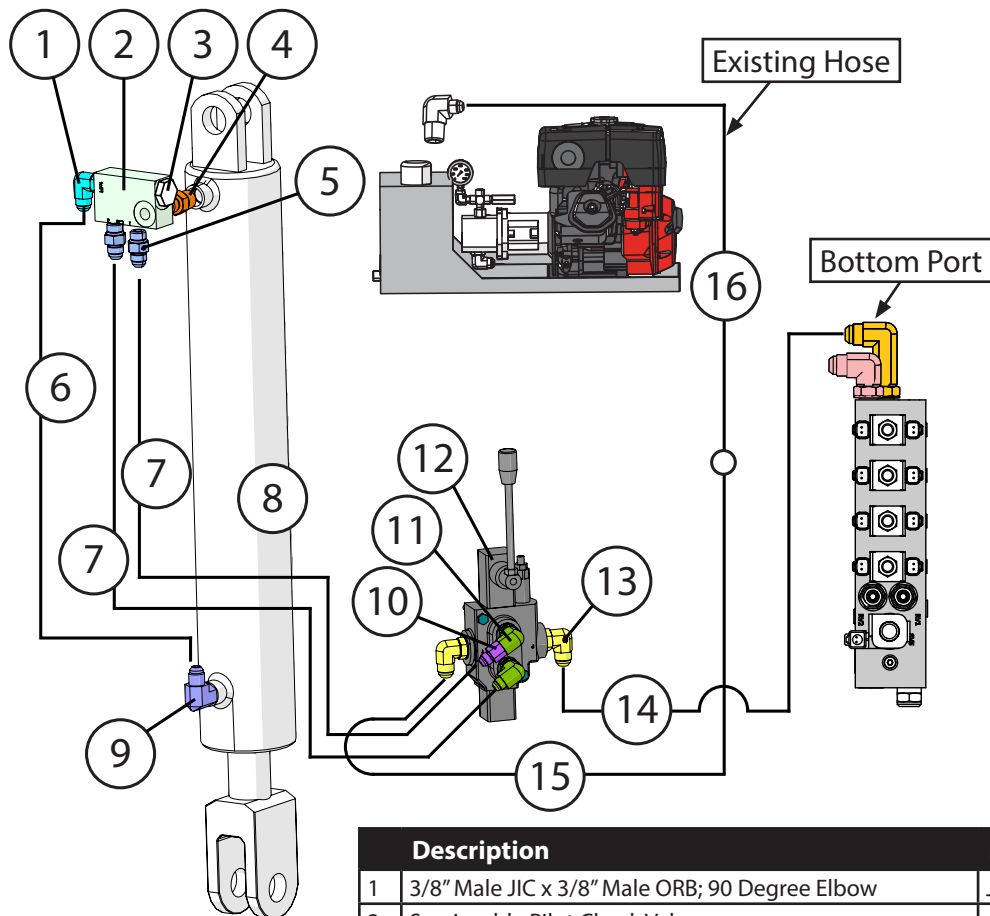


Hose Setup for All Valves Except Blue

If you have a blue colored valve bank then go to the next page, if not continue on.

Install Hoses

- Install the hoses as shown below.
- Hose "16" is an "Existing Hose" connected to the "Bottom Port"
- Unhook "16" from the bottom port of the valve bank, and connect directly to hose "15" shown below.
- Hose 14 will then get connected to the "Bottom Port" on the valve bank.
- Tighten fittings.

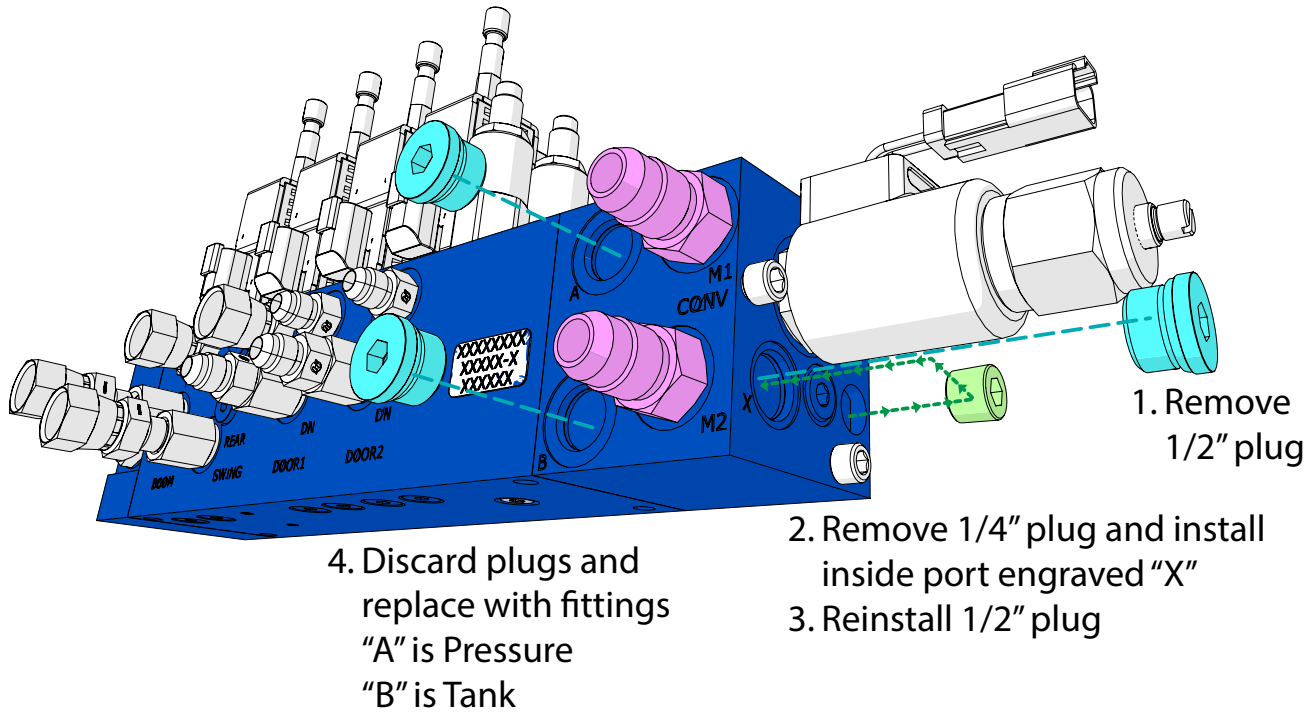


	Description	Part No.
1	3/8" Male JIC x 3/8" Male ORB; 90 Degree Elbow	JM0026121
2	Serviceable Pilot Check Valve	JM0061684
3	Check Valve Cartridge	JM0074412
4	3/8" Male NPT x 3/8" Male ORB; Straight	JM0061726
5	3/8" Male JIC x 3/8" Male ORB; Straight	JM0043614
6	3/8" x 25" Hydraulic Hose 25inch6M3K-6G-6FJX-6G-6FJX	JM0049162
7	3/8" x 68" Hydraulic Hose 68inch6M3K-6G-6FJX-6G-6FJX	JM0073253
8	3" x 24" x 1-1/2" Welded Cylinder (JD324)	JM0019644
9	3/8" Male NPT x 3/8" Male JIC; 90 Degree Elbow	JM0061728
10	3/8" Male JIC x 3/8" Female JIC with .047 Orifice	JM0054918
11	3/8" Male JIC x 1/2" Male ORB; 90 Degree Elbow	JM0037159
12	Hydraulic Jack Hand Valve with Pressure Relief	JM0031858
13	1/2" Male JIC x 1/2" Male ORB; 90 Degree Elbow	JM0010297
14	1/2" x 68" Hydraulic Hose 68inch8M3K-8G-8FJX-8G-8FJX	JM0073262
15	1/2" x 34" Hydraulic Hose 34inch8M3K-8G-8MJX-8G-8FJX	JM0073263
16	1/2" x 34" Hydraulic Hose 34inch8M3k-8G-8FJX-8G-8FJX	JM0025347

Continue to page 13

Set Up Instructions for Blue Valve

Convert Assembly to Run External Accessories

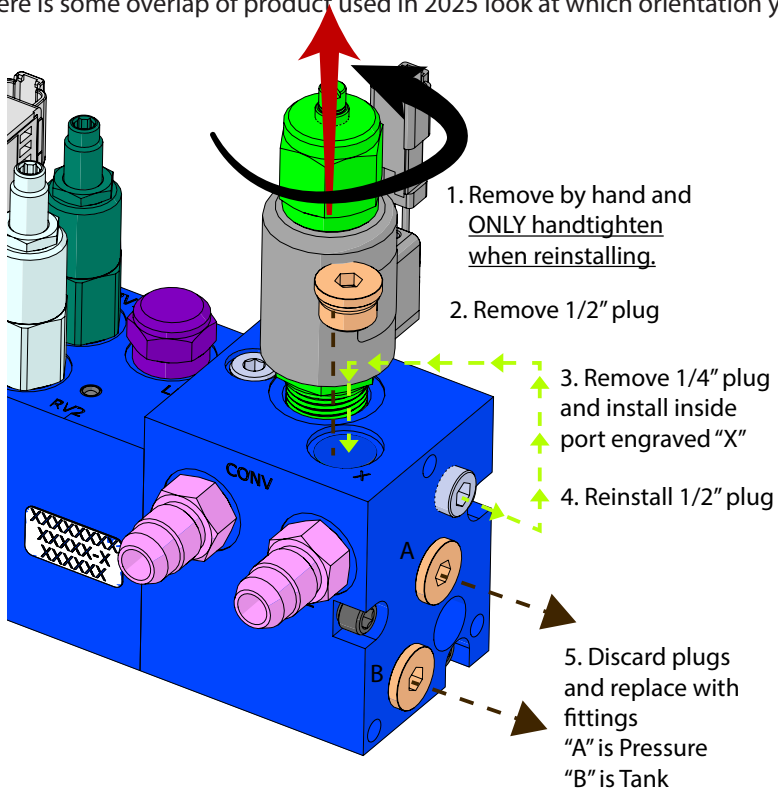


Install Hoses

- Install the fittings with 1/2" JIC x 1/2" ORB into "A" and "B" ports.
- Install the hoses as shown on the next page.
- Tighten fittings.

Convert Assembly to Run External Accessories 2025

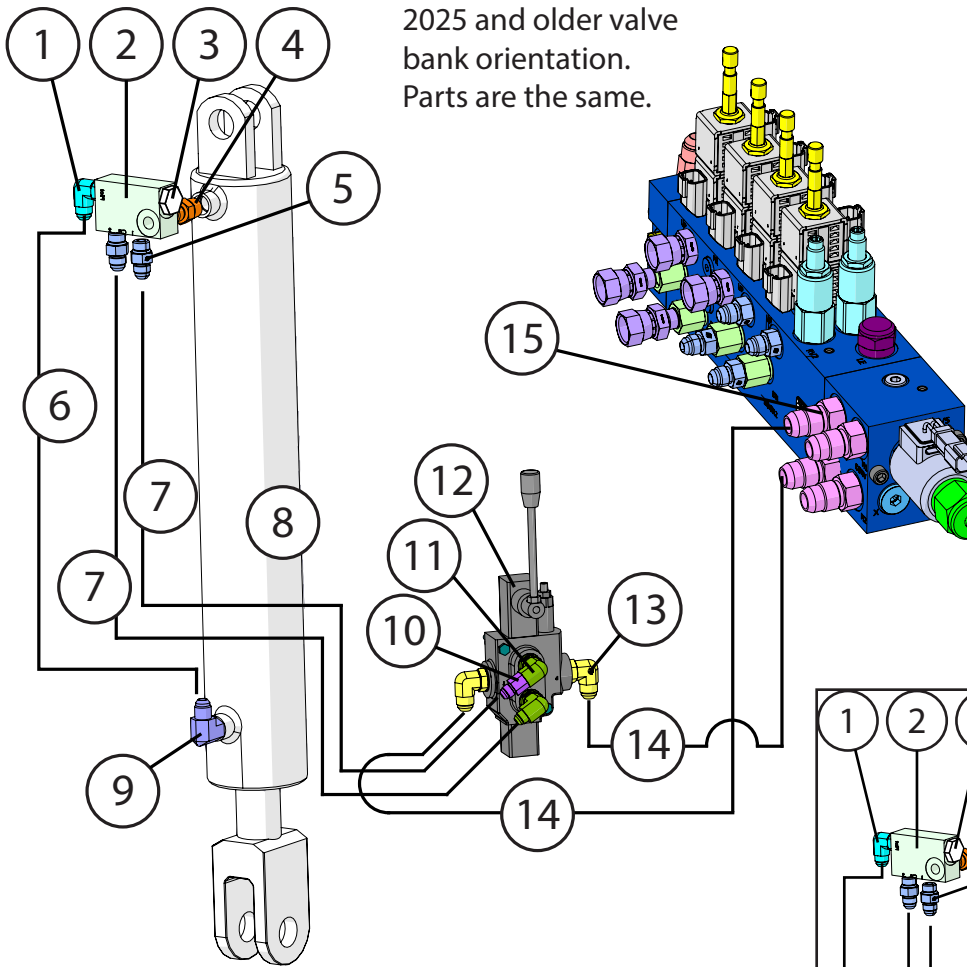
There is some overlap of product used in 2025 look at which orientation you have on your unit.



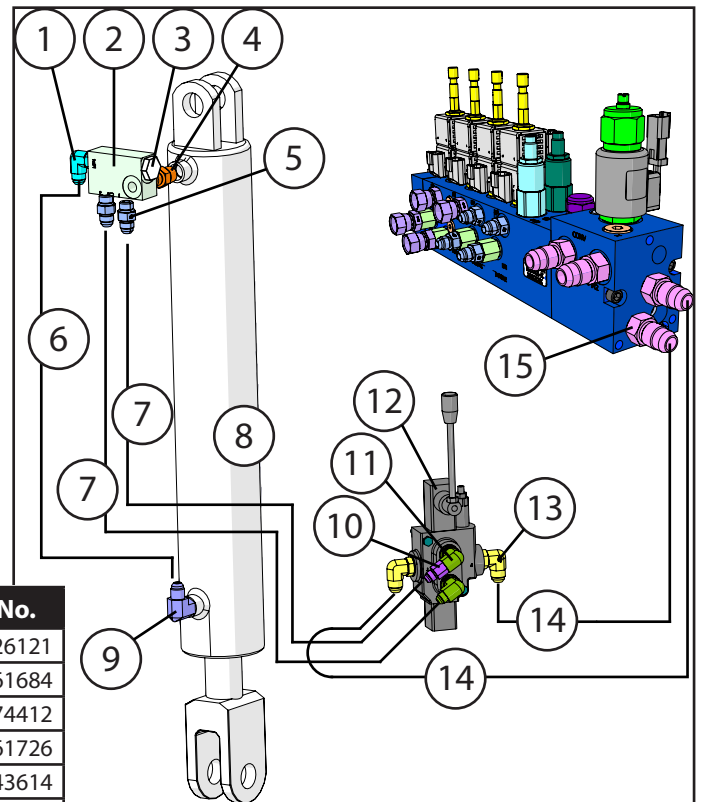
Install Hoses

- Install the fittings with 1/2" JIC x 1/2" ORB into "A" and "B" ports.
- Install the hoses as shown on the next page.
- Tighten fittings.

Set Up Instructions for Blue Valve



2025 and newer valve bank orientation. Parts are the same.



Description	Part No.
1 3/8" Male JIC x 3/8" Male ORB; 90 Degree Elbow	JM0026121
2 Serviceable Pilot Check Valve	JM0061684
3 Check Valve Cartridge	JM0074412
4 3/8" Male NPT x 3/8" Male ORB; Straight	JM0061726
5 3/8" Male JIC x 3/8" Male ORB; Straight	JM0043614
6 3/8" x 25" Hydraulic Hose 25inch6M3K-6G-6FJX-6G-6FJX	JM0049162
7 3/8" x 68" Hydraulic Hose 68inch6M3K-6G-6FJX-6G-6FJX	JM0073253
8 3" x 24" x 1-1/2" Welded Cylinder (JD324)	JM0019644
9 3/8" Male NPT x 3/8" Male JIC; 90 Degree Elbow	JM0061728
10 3/8" Male JIC x 3/8" Female JIC with .047 Orifice	JM0054918
11 3/8" Male JIC x 1/2" Male ORB; 90 Degree Elbow	JM0037159
12 Hydraulic Jack Hand Valve with Pressure Relief	JM0031858
13 1/2" Male JIC x 1/2" Male ORB; 90 Degree Elbow	JM0010297
14 1/2" x 43" Crimped Hydraulic Hose - 43inch8CR2-8G-8FJX-8G-8FJX	JM0083304
15 #8 Male JIC x #8 Male ORB - Straight	JM0010293

Final Steps and Testing

Test Functions

- Ensure all fittings and hardware are tight.
- Use zip ties to secure all hydraulic hoses to the SpeedTender.
- Turn motor on.
- Use control valve to raise and lower the hydraulic jack.

You may have extra hoses/fittings depending on your SpeedTender.

