

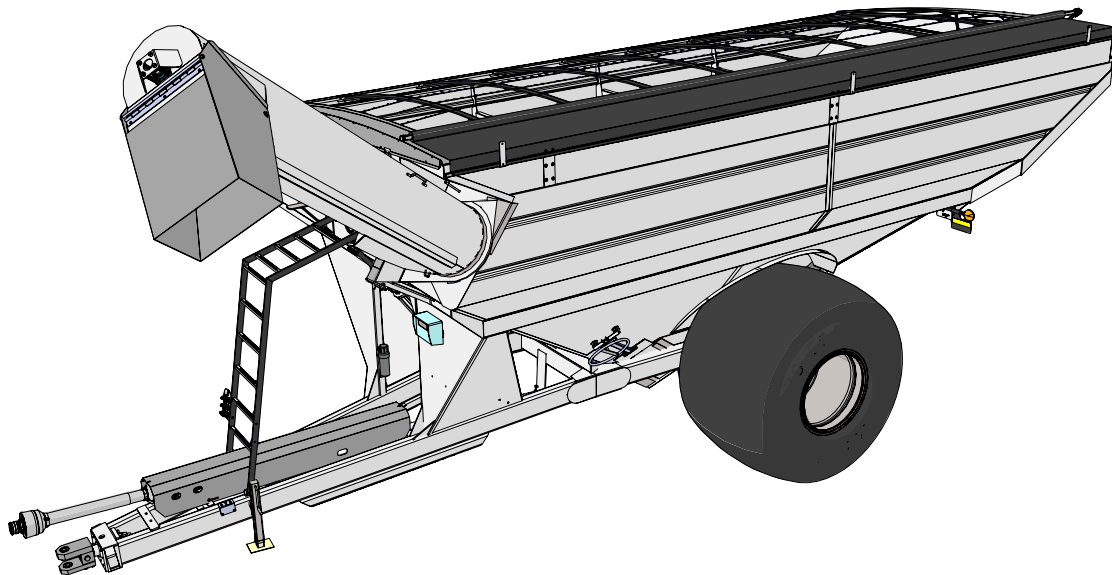


Manual

GRAIN CART OPERATOR'S MANUAL

MODEL

1401



Rev. 7.11.2024

J&M Manufacturing Co, Inc

284 Railroad Street - P.O. Box 547 | Fort Recovery, OH 45846 | Ph: (419) 375-2376 | Fax: (419) 375-2708

www.jm-inc.com

Stance

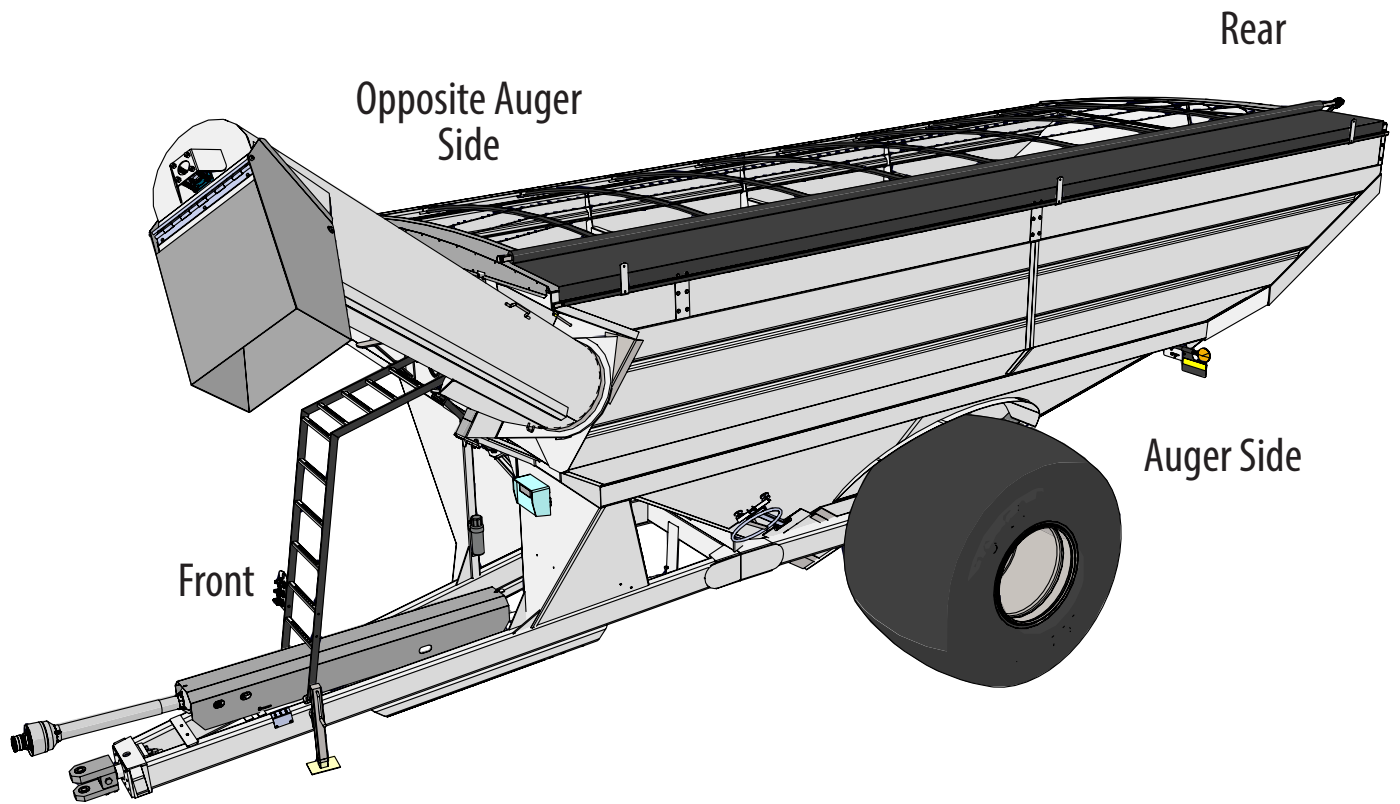


Table Of Contents

| | |
|--|----|
| To the Dealer | 4 |
| General Information | 5 |
| Specifications and Dimensions | 5 |
| Bolt Torque Chart | 7 |
| Stud and Wheel Nut Torque Specifications | 7 |
| Decals | 8 |
| Safety Rules..... | 10 |
| Initial Operation and Maintenance..... | 11 |
| Adjusting the Slip Clutch | 11 |
| Operating Instructions | 12 |
| Adjusting Row Spacing for Walking Tandem Duals | 13 |
| Lubrication Service Schedule..... | 14 |
| Routine Maintenance | 15 |
| Troubleshooting | 15 |
| Adjusting the Lower and Upper Flighting | 16 |
| Removing Dirt from the Restrictors on the Hydraulic Cylinder | 17 |
| Storage Preparation..... | 17 |
| Repair Parts List and Diagrams | |
| Wheel Rims and Tires..... | 17 |
| Hub & Spindle Assembly 250-10 (Single Wheels) | 18 |
| Hub & Spindle Assembly 550-20 (Single Wheels-20 Bolt Hubs) | 19 |
| Hub & Spindle Assembly W-881 (Walking Tandem Dual Wheels) | 20 |
| Power Take-Off (PTO) Shaft Assembly - Comer | 21 |
| Power Take-Off (PTO) Shaft Assembly - Weasler | 22 |
| Driveline Assembly..... | 23 |
| 130 Degree Gearbox Assembly - Weasler..... | 24 |
| Hitch and Jack Assembly | 26 |
| Lower Auger Assembly..... | 27 |
| Top Auger Linkage..... | 28 |
| Top Auger Assembly | 28 |
| Flow Control Spout Assembly | 29 |
| Lock and Load Switch Assembly | 29 |
| Hydraulic Hoses & Cylinders | 30 |
| Auto-Gate Shut-Off | 32 |
| Lights and Wiring | 33 |
| 5-Point Scale System for Single Wheel/Tracks | 34 |
| 5-Point Scale System for Walking Tandem Dual Wheels | 36 |
| Walking Tandem Dual Wheel Assembly | 37 |
| Ladder Assembly..... | 38 |
| Sideboards | 39 |
| Door Wheel Assembly..... | 40 |
| Inspection Windows | 40 |
| Spring Return Assembly..... | 41 |
| Roll Tarp Assembly | 42 |

To the Dealer

Read manual instructions and safety rules. Make sure all items on the Dealer's Pre-Delivery and Delivery Check Lists are completed before releasing equipment to the owner.

The dealer must complete the Warranty Registration found on the Dealer Portal website located at dealer.jm-inc.com and return it to J&M Mfg. Co., Inc. at the address indicated on the form. Warranty claims will be denied if the Warranty Registration has not been submitted.

EXPRESS WARRANTY:

J&M Mfg. Co., Inc. warrants against defects in construction or materials for a period of ONE year. We reserve the right to inspect and decide whether material or construction was faulty or whether abuse or accident voids our guarantee.

Warranty service must be performed by a dealer or service center authorized by J&M Mfg. Co., Inc. to sell and/or service the type of product involved, which will use only new or remanufactured parts or components furnished by J&M Mfg. Co., Inc. Warranty service will be performed without charge to the purchaser for parts or labor based on the Warranty Labor Times schedule. Under no circumstance will allowable labor times extend beyond the maximum hours indicated in the Warranty Labor Times schedule for each warranty procedure. The purchaser will be responsible, however, for any service call and/or transportation of the product to and from the dealer or service center's place of business, for any premium charged for overtime labor requested by the purchaser, and for any service and/or maintenance not directly related to any defect covered under the warranty. Costs associated with equipment rental, product down time, or product disposal are not warrantable and will not be accepted under any circumstance.

Each Warranty term begins on the date of product delivery to the purchaser. Under no circumstance will warranty be approved unless (i) the product warranty registration card has been properly completed and submitted to the equipment manufacturer, and (ii) a warranty authorization number has been issued by the equipment manufacturer. This Warranty is effective only if the warranty registration card is returned within 30 days of purchase.

This Warranty does not cover a component which fails, malfunctions or is damaged as a result of (i) improper modification or repair, (ii) accident, abuse or improper use, (iii) improper or insufficient maintenance, or (iv) normal wear or tear. This Warranty does not cover products that are previously owned and extends solely to the original purchaser of the product. Should the original purchaser sell or otherwise transfer this product to a third party, this Warranty does not transfer to the third party purchaser in any way. J&M Mfg. Co., Inc. makes no Warranty, express or implied, with respect to tires or other parts or accessories not manufactured by J&M Mfg. Co., Inc. Warranties for these items, if any, are provided separately by their respective manufacturers.

THIS WARRANTY IS EXPRESSLY IN LIEU OF ALL OTHER WARRANTIES OR CONDITIONS, EXPRESS, IMPLIED OR STATUTORY, INCLUDING ANY IMPLIED WARRANTY OF MERCHANTABILITY OR FITNESS FOR PARTICULAR PURPOSE.

In no event shall J&M Mfg. Co., Inc. be liable for special, direct, incidental or consequential damages of any kind. The exclusive remedy under this Warranty shall be repair or replacement of the defective component at J&M Mfg. Co., Inc.'s option. This is the entire agreement between J&M Mfg. Co., Inc. and the Owner about warranty and no J&M Mfg. Co., Inc. employee or dealer is authorized to make any additional warranty on behalf of J&M Mfg. Co., Inc.

The manufacturer reserves the right to make product design and material changes at any time without notice. They shall not incur any obligation or liability to incorporate such changes and improvements in products previously sold to any customer, nor shall they be obligated or liable for the replacement of previously sold products with products or parts incorporating such changes.

SERVICE:

The equipment you have purchased has been carefully manufactured to provide dependable and satisfactory use. Like all mechanical products, it will require cleaning and maintenance. Lubricate the unit as specified. Observe all safety information in this manual and safety signs on the equipment.

For service, your authorized J&M dealer has trained mechanics, genuine J&M service parts, and the necessary tools and equipment to handle all your needs.

Use only genuine J&M service parts. Substitute parts may void warranty and may not meet standards required for safety and satisfactory operation. Record the model number and serial number of your equipment in the spaces provided:

Model No: 1401 Grain Cart **Serial No:** _____ **Date of Purchase:** _____

Purchased From: _____

Provide this information to your dealer to obtain correct repair parts.

General Information

TO THE OWNER:

The purpose of this manual is to assist you in operating and maintaining your grain cart in a safe manner. Read it carefully. It furnishes information and instructions that will help you achieve years of dependable performance and help maintain safe operating conditions. If this machine is used by an employee or is loaned or rented, make certain that the operator(s), prior to operating:

1. Is instructed in safe and proper use.
2. Reviews and understands the manual(s) pertaining to this machine.

Throughout this manual, the term **IMPORTANT** is used to indicate that failure to observe can cause damage to equipment. The terms **CAUTION**, **WARNING** and **DANGER** are used in conjunction with the Safety-Alert Symbol (a triangle with an exclamation mark) to indicate the degree of hazard for items of personal safety. When you see this symbol, carefully read the message that follows and be alert to the possibility of personal injury or death.



This Safety-Alert symbol indicates a hazard and means **ATTENTION! BECOME ALERT! YOUR SAFETY IS INVOLVED!**



DANGER

Indicates an imminently hazardous situation that, if not avoided, will result in death or serious injury.



WARNING

Indicates a potentially hazardous situation that, if not avoided, could result in death or serious injury, and includes hazards that are exposed when guards are removed.



CAUTION

Indicates a potentially hazardous situation that, if not avoided, may result in minor or moderate injury.

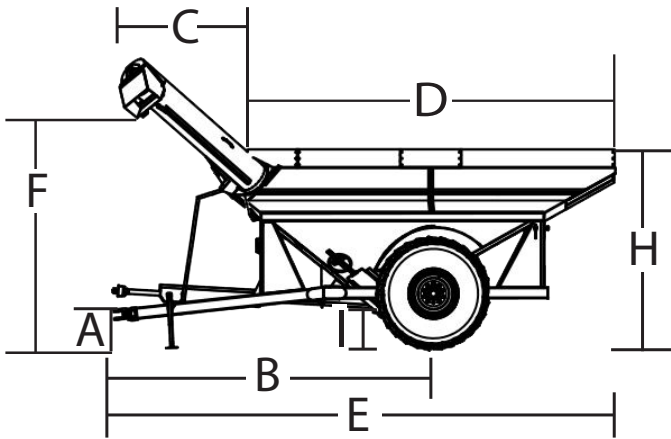
IMPORTANT

Indicates that failure to observe can cause damage to equipment.

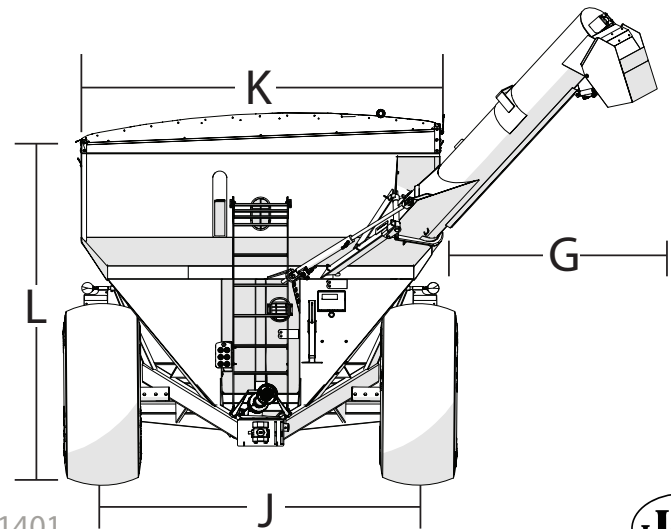
NOTE

Indicates helpful information.

Specifications and Dimensions



| 1401 | |
|-------------|----------------|
| A | 1'-6" |
| B | 21'-10" |
| C | 8'-6" |
| D | 25'-6" |
| E | 34'-5" |
| F | 12'-8" |
| G | 6'-4" |
| H | 12'-10" |
| I | 1'-5" |
| J | 9'-6" / 10'-0" |
| K | 11'-9" |
| L | 12'-7" |

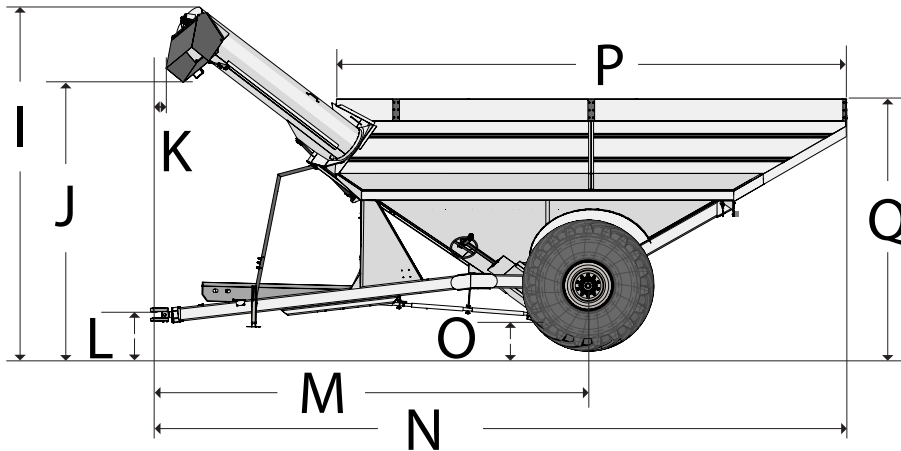


Specifications and Dimensions

1401

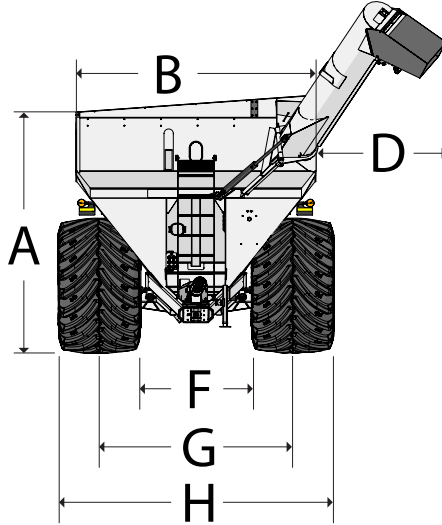
| | |
|-----------------|---------|
| A | 12'-3" |
| B | 11'-9" |
| D | 6'-5" |
| F | 5'-11" |
| G | 10'-0" |
| H | 14'-1" |
| I | 17'-1" |
| J | 13'-1" |
| K | 0'-10" |
| L | 1'-7" |
| M | 21'-6" |
| N | 34'-11" |
| O | 1'-5" |
| P | 25'-6" |
| Q | 12'-6" |
| Max Tarp Height | 13'-0" |

*Measurements taken using 1250/50R32 tires.



Required Tractor HP

| Driving Speed HP (Fully Loaded) | | | Unloading HP | |
|---------------------------------|--------|--------|----------------|----------------|
| 5 mph | 10 mph | 15 mph | Dry Corn (15%) | Wet Corn (27%) |
| 134 | 305 | 465 | 211 | 251 |

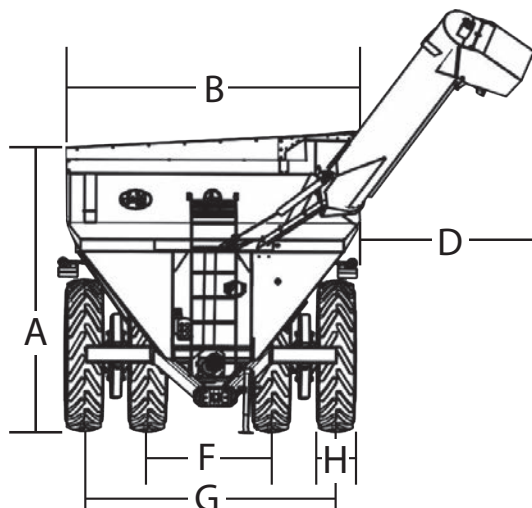


Specifications Single Wheel Option

| | |
|------------------------|--------------------|
| Capacity | 1,400 Bushels |
| Auger, One Vertical | 22" |
| Unload Speed | 600+ bu/min |
| Wheels (2) | 44x32 |
| Tires (2) | IF1250/50R32 |
| Hubs (2) | 10 Bolt or 20 Bolt |
| Spindles (2) | 6" Diameter |
| Tongue Weight | |
| Empty | 2,400 lbs. |
| Loaded | 4,800 lbs. |
| Total Weight (approx.) | 16,300 lbs. |

Specifications Track Option

| | |
|-----------------------------|---------------|
| Capacity | 1,400 Bushels |
| Auger, One Vertical | 22" |
| Unload Speed | 600+ bu/min |
| Compaction Rate with | |
| V4 LT's | N/A |
| V4's | 12.7 psi |
| STX-36 | 11.7 psi |
| STX-46 | 9.2 psi |
| Total Weight (approx.) with | |
| V4 LT's | N/A |
| V4's | 22,620 lbs. |
| STX-36 | 24,120 lbs. |
| STX-46 | 28,283 lbs. |



Dual Wheel Option

| | |
|---|-----------------|
| A | 12'-0" |
| B | 11'-9" |
| D | 6'-5" |
| F | 5'-0" / 6'-0" |
| G | 10'-0" / 12'-0" |
| H | 1'-10" |

*Measurements taken using 520/85R42 tires.

Specifications Dual Wheel Option

| | |
|------------------------|--------------------------|
| Capacity | 1400 Bushels |
| Auger, One Vertical | 22" |
| Unload Speed | 600+ bu/min |
| Wheels (2) | 18x42 |
| Tires (2) | IF520/85R42 or 520/85R42 |
| Hubs (2) | 10 Bolt |
| Spindles (2) | 4-1/2" Diameter |
| Total Weight (approx.) | 19,300 lbs. |

Bolt Torque Chart

Always tighten hardware to these values unless a different torque or tightening procedure is listed for specific application. Fasteners must always be replaced with the same grade as specified in the manual parts list. Always use the proper tool for tightening hardware. Make sure fastener threads are clean and you start thread engagement properly. **Use these values when tightening all bolts and nuts with the exception of wheel nuts.**

SAE Fasteners

| Coarse Thread Series | | | | |
|------------------------------------|------------|--------------|------------|--------------|
| | Grade 5 | | Grade 8 | |
| <i>Diameter and Pitch (Inches)</i> | <i>Dry</i> | <i>Oiled</i> | <i>Dry</i> | <i>Oiled</i> |
| 1/4"-20 | 8 ft-lbs | 6 ft-lbs | 12 ft-lbs | 9 ft-lbs |
| 5/16"-18 | 17 | 13 | 25 | 18 |
| 3/8"-16 | 31 | 23 | 44 | 33 |
| 7/16"-14 | 49 | 37 | 70 | 52 |
| 1/2"-13 | 75 | 57 | 106 | 80 |
| 9/16"-12 | 109 | 82 | 154 | 115 |
| 5/8"-11 | 150 | 113 | 212 | 159 |
| 3/4"-10 | 267 | 200 | 376 | 282 |
| 7/8"-9 | 429 | 322 | 606 | 455 |
| 1"-8 | 644 | 483 | 909 | 681 |
| Fine Thread Series | | | | |
| <i>Diameter and Pitch (Inches)</i> | <i>Dry</i> | <i>Oiled</i> | <i>Dry</i> | <i>Oiled</i> |
| 1/4"-28 | 10 ft-lbs | 7 ft-lbs | 14 ft-lbs | 10 ft-lbs |
| 5/16"-24 | 19 | 15 | 27 | 20 |
| 3/8"-24 | 35 | 26 | 49 | 37 |
| 7/16"-20 | 55 | 41 | 78 | 58 |
| 1/2"-20 | 85 | 64 | 120 | 90 |
| 9/16"-18 | 121 | 91 | 171 | 128 |
| 5/8"-18 | 170 | 127 | 240 | 180 |
| 3/4"-16 | 297 | 223 | 420 | 315 |
| 7/8"-14 | 474 | 355 | 669 | 502 |

Stud and Wheel Nut Torque Specifications

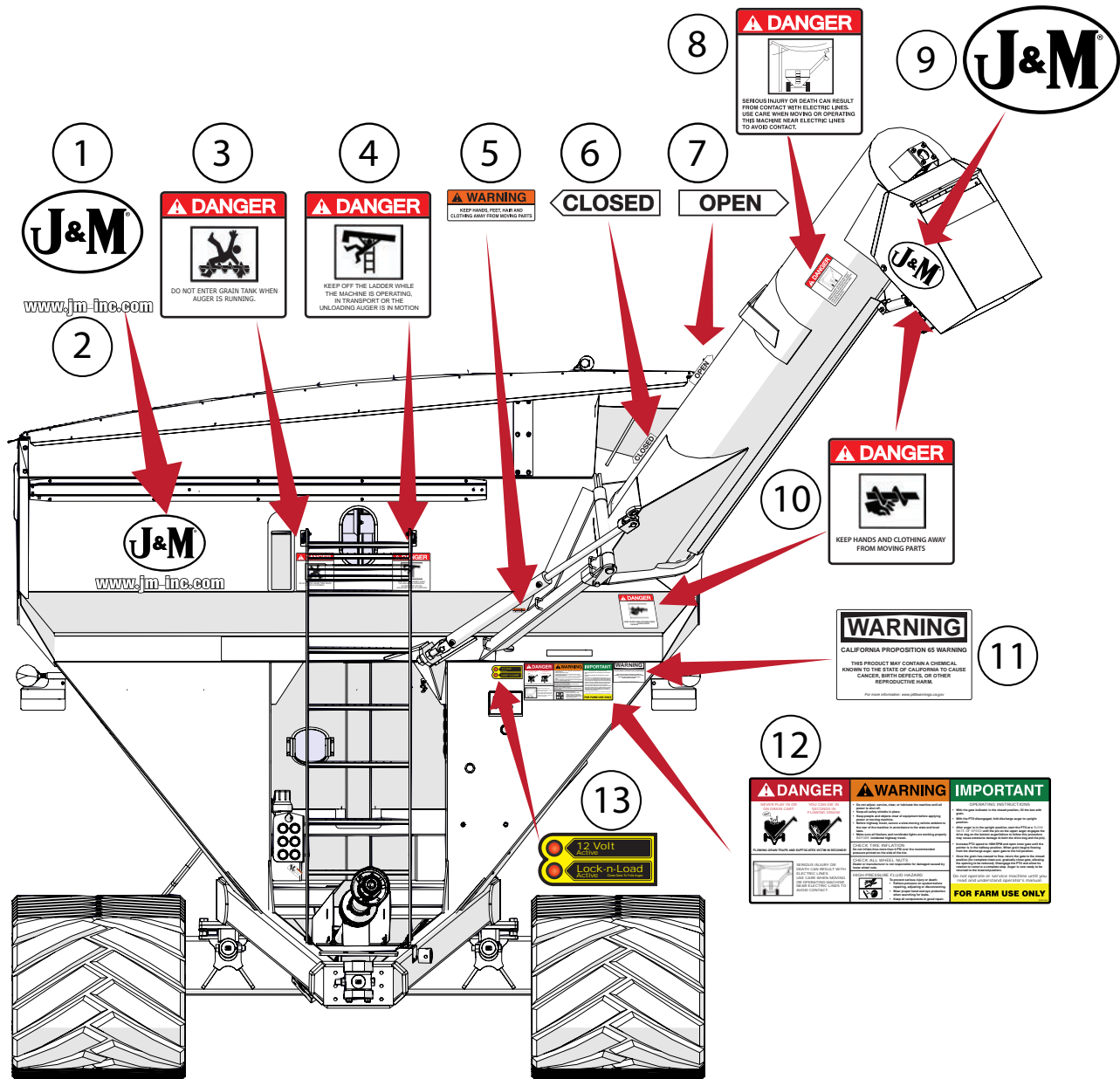
Always tighten hardware to these values unless a different torque or tightening procedure is listed for specific application. Fasteners must always be replaced with the same grade as specified in the manual parts list. Always use the proper tool for tightening hardware. Make sure fastener threads are clean and you start thread engagement properly. **Use these values when tightening all studs and wheel nuts.**

| Stud | Tightening Torque |
|----------|-------------------|
| 1/2"-20 | 120 ft-lbs |
| 9/16"-18 | 170 ft-lbs |
| 5/8"-18 | 300 ft-lbs |
| 3/4"-16 | 400 ft-lbs |
| 20mm | 475 ft-lbs |
| 22mm | 640 ft-lbs |

TIGHTENING WHEEL NUTS: Standard **3/4" wheel studs and nuts should be tightened to torque 400 ft-lbs** and standard **22mm wheel studs should be tightened to torque 640 ft-lbs**. During initial operation of the grain cart and then checked for proper torque after every 10 hours of use. Failure to do so may damage wheel nut seats. Once seats are damaged, it will become impossible to keep nuts tight.

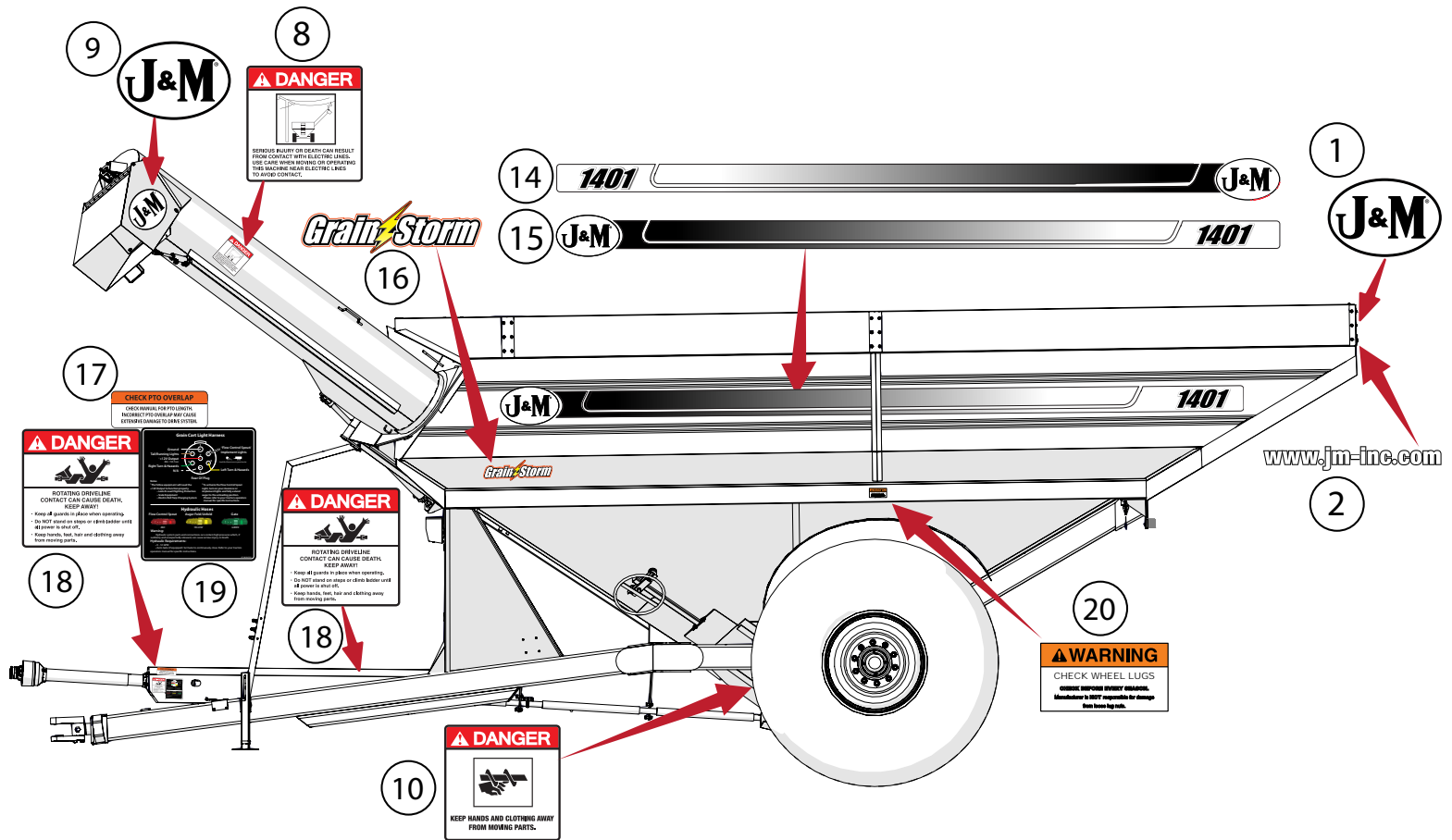
Decals

⚠ ATTENTION! BECOME ALERT! YOUR SAFETY IS INVOLVED! ⚠
Replace Immediately If Damaged or Missing



| Description | Part No. |
|---|-----------|
| 1 J&M Oval Decal (Large) 9-1/2" x 15" | JM0015151 |
| 2 www.jm-inc.com Decal | JM0019239 |
| 3 Danger, Do Not Enter Grain Tank Decal | JM0018033 |
| 4 Danger, Keep Off Ladder Decal | JM0018034 |
| 5 Warning, Keep Hands Away Decal | JM0018039 |
| 6 Closed Decal | JM0025434 |
| 7 Open Decal | JM0025433 |
| 8 Danger, Electric Lines Decal | JM0015099 |
| 9 J&M Oval Decal (Medium) 5-1/2" x 8-1/2" | JM0010179 |
| 10 Danger, Keep Hands and Clothing Away Decal | JM0018035 |
| 11 California Proposition 65 Warning Decal | JM0077568 |
| 12 Danger Warning Important Decal | JM0037665 |

Decals



| Description | Part No. |
|---|-----------|
| 13 Lock and Load Indicator Lights Decal | JM0044289 |
| 14 1401 Opposite Auger Side Stripe Kit | JM0025977 |
| 15 1401 Auger Side Stripe Kit | JM0025975 |
| 16 Grain Storm Decal | JM0025930 |
| 17 Check PTO Overlap Decal | JM0025435 |
| 18 Danger, Rotating Driveline Decal | JM0018036 |
| 19 Grain Cart Light Harness Decal (Standard Fold Carts) | JM0041058 |
| 20 Warning, Check Wheel Lugs Decal | JM0077567 |

Safety Rules

ATTENTION! BECOME ALERT! YOUR SAFETY IS INVOLVED!

Safety is a primary concern in the design and manufacture of our products. Unfortunately, our efforts to provide safe equipment can be erased by an operator's single careless act. In addition, hazard control and accident prevention are dependent upon the awareness, concern, judgment, and proper training of personnel involved in the operation, transport, maintenance and storage of equipment.

Make certain the operator(s), prior to operating, is instructed in safe and proper use and reviews and understands the manual(s) pertaining to this machine. Also make certain the operator(s) reviews and understands the operator's manual of the tractor prior to hooking up or operating the grain cart.

Read this manual before you operate this machine. If you do not understand any part of this manual, or need more information, contact J&M Mfg. Co., Inc. or your authorized dealer.

SAFETY

Understand that your safety and the safety of other persons is measured by how you service and operate this machine. Know the positions and functions of all controls before you try to operate them. Make sure to check all controls in a safe area before starting your work.

The safety information given in this manual does not replace safety codes, federal, state or local laws. Make certain your machine has the proper equipment as designated by local laws and regulations.

A frequent cause of personal injury or death is from persons falling off equipment and being run over. Do not permit persons to ride on this machine.

Travel speeds should be such that complete control and machine stability is maintained at all times. Where possible, avoid operating near ditches, embankments and holes. Reduce speed when turning, crossing slopes and rough, slick or muddy surfaces.

Collision of high speed road traffic and slow moving machines can cause personal injury or death. On roads, use flasher lights according to local laws. Keep slow-moving-vehicle emblem visible. Pull over to let faster traffic pass.

Hydraulic oil leaking under pressure can penetrate skin and cause infection or other injury. To prevent personal injury,

- Relieve all pressure, before disconnecting fluid lines,
- Before applying pressure, make sure all connections are tight and components are in good condition,
- Never use your hand to check for suspected leaks under pressure. Use a piece of cardboard or wood for this purpose.
- If injured by leaking fluid, see your doctor immediately.

When transporting the grain cart, always keep the auger in the stow position.

Use care when moving or operating the grain cart near electric lines as serious injury or death can result from contact.

Never adjust, service, clean, or lubricate the grain cart until all power is shut off. Keep all safety shields in place. Keep hands, feet, hair and clothing away from moving parts while the grain cart is in operation.

The service ladder is for service work only. If you must climb into the grain tank, be certain that all power is shut off and then use extreme caution when climbing into the grain cart.

Make sure that everyone is clear of equipment before applying power or moving the machine.

Make sure the grain cart is fastened securely to the tractor using a high strength hitch pin, clip and safety chains. Make sure the grain cart hitch properly matches the hitch type of the tractor. Use a single prong (spade) grain cart hitch with a double prong (clevis) tractor hitch. Use a double prong (clevis) grain cart hitch with a single prong (spade) tractor hitch. Be sure the tractor pin is at least 1/4" smaller in diameter than the pin hole in the grain cart hitch to ensure enough free movement when traversing through uneven terrain.

Before filling the grain cart, make certain no one is inside the grain tank. Never allow children, or anyone, in, near, or on the grain cart during transport or during loading and unloading of grain. Be aware that moving grain is dangerous and can cause entrapment, resulting in severe injury or death by suffocation.

Never operate the auger system with anyone inside the grain tank. Hands, feet, hair and clothing can fit through the openings in and around the grate. Contact with the auger can cause severe injury or death. Ensure all power is shut off before service work is performed.

Before unhooking the grain cart from the tractor, be sure the jack stand is properly mounted and in place and the wheels are properly blocked to prevent the cart from moving.

Replace the safety chains immediately if you have an event where they are used near their max strength.

Initial Operation and Maintenance

WARNING

BE CERTAIN THAT ALL POWER IS SHUT OFF BEFORE SERVICING THE GRAIN CART.

Before the grain cart is put into service:

- Have the safety instructions been read and clearly understood by the operator(s) of this machine?
- Has the gearbox been properly filled with SAE 80W-90 gearbox lubricant?
- Have all nuts, bolts, bearings and braces been properly fastened?
- Has the PTO been checked for proper overlap?

IMPORTANT: Has the slip clutch on the PTO been serviced? If the slip clutch is left unchecked, damages to the power-take-off and drive shaft may result. Before using the grain cart, loosen the bolts around the slip clutch. Make sure the friction plates turn free of each other and are not corroded together. Re-tighten the tension bolts. Run the auger system EMPTY and check for proper engagement of the slip clutch.

CHECK PTO OVERLAP LENGTH: Overlap length may vary depending on the tractor model and hitch setting. Try to obtain the greatest possible overlap without bottoming out in the extreme operating conditions. Too much overlap may cause the PTO to bottom out and damage the driveline. Not enough overlap may cause the PTO front and back halves to separate. From the fully compressed (shortest) length the PTO should be telescoped (extended) between 10" and 22". Different PTO lengths may need to be purchased to accommodate your terrain. A 4" shorter or a 10" longer PTO can be ordered through your dealer from J&M Manufacturing.

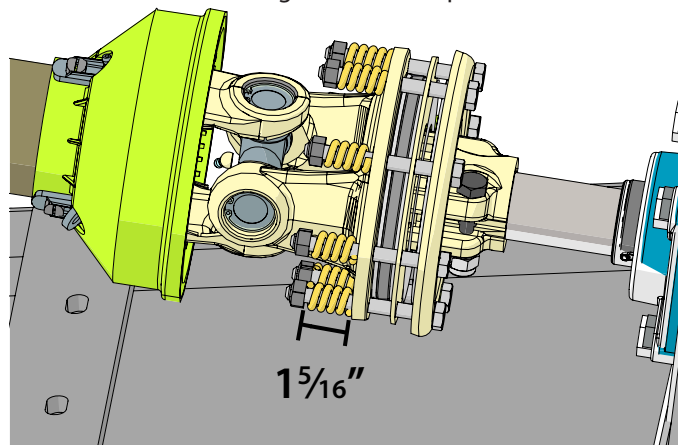
GREASE POINTS: Are all bearings on the drive line properly greased? Are all set screws in the bearings and U-joints tight? Has the power-take-off shaft been properly greased at all points including the cross bearings? Has the universal joint at the gearbox been greased? Have all grease points at the auger hinge area, including the hanger bushing assembly been greased? If applicable, has the swivel ball hitch been greased?

TIRE PRESSURE: Are the tires properly inflated? The following is to be used as a **general guide** for tire inflation for cyclic use. Figures can vary depending on specific brand of tire used. It is important that tires are inspected before and after the unit is loaded. The tire pressures below are recommended by the manufacturer. **On select tires the listed pressure is lower than the max tire pressure to reduce compaction. If desired, the pressure MAY BE increased UP TO the max tire pressure for traveling long distance while empty on the road.**

| Tire Size | psi |
|---|-----|
| IF520/85R42 Lug Tires (Firestone) (169 LI) (for 18x42-10 Hole Wheels) | 35 |
| 520/85R42 Lug Tires (Alliance) (169 LI) (for 18x42-10 Hole Wheels) | 55 |
| IF1250/50R32 Lug Tires (Firestone) (201B LI) (for 44x32-10 Hole and 44x32-20 Hole Wheels) | 42 |
| IF1250/50R32 Lug Tires (Alliance) (201B LI) (for 44x32-10 Hole and 44x32-20 Hole Wheels) | 42 |

Adjusting the Slip Clutch

When adjusting the slip clutch, tighten the bolt so that the length from the top to bottom of the compressed spring measures 1-5/16".

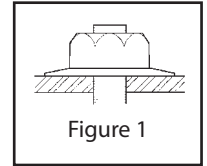


Operating Instructions

VERY IMPORTANT: Under no circumstance is it recommended to tow a loaded grain cart in excess of 8 mph.

WHEEL NUTS: Are the wheel nuts properly fastened? **Torque to 640 Ft.-Lbs. for standard 22mm wheel studs and nuts. Torque to 400 Ft.-Lbs. for 3/4" wheel studs and nuts. Wheel studs and nuts should be checked after each load during initial operation of the cart and then after every 10 hours of use. Failure to do so may damage wheel studs and nuts.** Once the seats are damaged, it will become impossible to keep the lug nuts tight.

The drawing shows the proper way to mount the wheels using Budd-type nuts. The wheels supplied with your grain cart have straight holes and the Budd nuts will be mounted according to Figure 1. Wheels that are improperly installed on the grain cart, resulting in product failure, will nullify warranty and shift the burden of liability to the owner/operator. **We recommend you inspect your wheel nuts to make sure they are properly installed. Also, check the wheel nuts on a regular basis to ensure they are tight.**



LIGHTING AND SAFETY DECALS: Are the rear, amber extremity lights properly positioned? Extend the lights within 16" (40,6cm) of the left and right extremities of the grain cart. Is an SMV Emblem attached to the rear of the grain cart?

Are the lights working properly? Are all lights and reflective decals clean, visible and properly placed?

BE CERTAIN THAT ALL POWER IS SHUT OFF WHEN HOOKING UP TO TRACTOR OR CONNECTING HYDRAULIC LINES TO TRACTOR.

Tractor Requirements for proper towing: Model 1401 grain carts require a 250+ HP Tractor.

IMPORTANT: Do NOT pull a loaded grain cart on highway. For incidental highway travel, observe the section below.

Tow Loads Safely

Stopping distance increases with speed and weight of towed loads, and on slopes. Towed loads with or without brakes that are too heavy for the tractor or are towed too fast can cause loss of control. Consider the total weight of the equipment and its load.

Observe these recommended maximum road speeds, or local speed limits which may be lower:

- **Grain cart empty:** Do not travel more than 20 mph (32 km/hr) and do not tow loads more than 1.5 times the pulling unit's weight.
- **Grain cart loaded:** Do not travel more than 8 mph (12 km/hr) and do not tow loads more than 1.5 times the pulling unit's weight.

Ensure the load does not exceed the recommended weight ratio. Use additional caution when towing loads under adverse surface conditions, when turning, and on inclines.

⚠ WARNING: For greater stability on uneven or steep terrain, position non-scale wheel spindles at the furthest out setting.

⚠ IMPORTANT:

1. Connect grain cart hitch to tractor drawbar using a good quality hitch pin. Attach the safety chain to the tractor and through one chain loop provided on either side of the grain cart frame as shown. Make sure the grain cart hitch properly matches the hitch of the tractor. Use a single prong (spade) grain cart hitch with a tractor double prong (clevis) hitch. Use a double prong (clevis) grain cart hitch with a single prong (spade) tractor hitch.



Safety Chain User Instruction

- a) Secure the safety chain by looping it around each side of the grain cart as shown and connecting to the towing machine's attaching bar.
 - b) Do not allow any more slack than necessary for articulation.
 - c) Do not use any intermediate support as the attaching point.
 - d) Store the safety chain by securing it around the main axle A-frame of the grain cart.
 - e) Replace the safety chain if one or more links or end fittings are broken, stretched or otherwise damaged or deformed.
2. Attach the power-take-off shaft to the tractor. The PTO must have at least 10" of engagement. Check tractor drawbar for clearance and length and adjust if necessary. **Make sure the PTO does not bottom out when making sharp turns as it may bend the drive shaft.**
 3. Make sure the jack stand is repositioned from the lower support position before the cart is moved. **Never use the jack to support a loaded grain cart.**
 4. Be sure that no debris or foreign objects are in the grain cart.

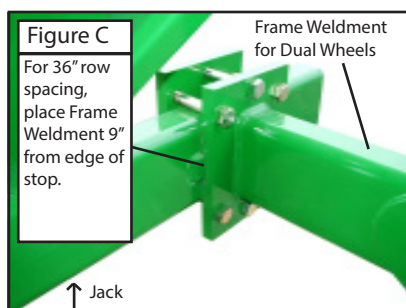
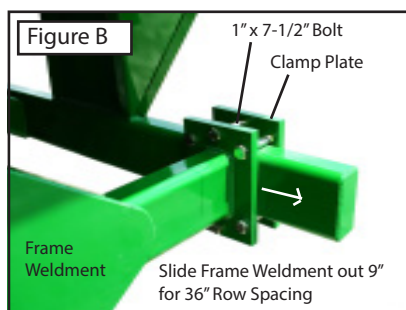
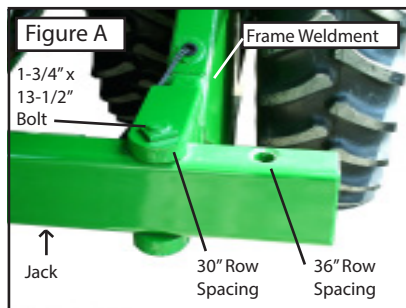
Operating Instructions

5. Attach the hydraulic lines to the tractor. Two hydraulic lines (green band) operate the inside gate mechanism. Connect these lines to one service outlet on the tractor. Two hydraulic lines (yellow band) operate the folding mechanism of the auger. Connect these lines to a second service outlet on the tractor. The remaining two hydraulic lines (red band) operate the hydraulic flow control spout located at the end of the upper auger. Connect these lines to a third service outlet on the tractor. Make sure the air is bled from the hydraulic cylinders and hoses.
6. Run the auger system EMPTY before loading grain into the tank for actual use. Make certain that the upper and lower augers are properly engaged.
7. Connect the lighting 7-prong connector end on the main wiring harness to the tractor electrical outlet. Make sure that all flasher and turn indicator lights are working properly before incidental highway travel.

CAUTION

- Do NOT operate the grain cart before reading and understanding this Operator's Manual and ALL danger, warning and caution signs.
- Be sure that a Slow-Moving-Vehicle emblem is attached to the rear of the grain cart.
- Never exceed 1,000 rpm on the PTO and driveline system.
- Never fold or extend the auger until the PTO has come to a complete stop.
- Never fill the grain cart unless the gate indicator is in the closed position.
- Never allow foreign objects (shovels, etc.) to be placed inside the grain cart.
- Never engage the lugs and drive dogs on the augers when the system is moving at a high rate of speed.
- Never perform maintenance work or service the grain cart with the tractor running.
- Replace the safety chains immediately if you have an event where they are used near their max strength.

Adjusting Row Spacing for Walking Tandem Duals



1. Securely position jacks under the frame of the grain cart as shown in Figures A and C.
2. Loosen the rear of the frame weldment by removing the 1" x 7-1/2" Gr8 bolts and clamp plate.
3. Remove the 1-3/4" x 13-1/2" bolt and jam nut from the front of the frame weldment.
4. Slide the frame weldment out to the bolt location for 36" row spacings as shown in Figure A and secure using the 1-3/4" x 13-1/2" bolt and jam nut. If the grain cart is equipped with an electronic scale system, be sure not to damage the electronic cord when moving the frame weldment.
5. Swing the frame weldment outward. Switch the tire location by removing both tires and remounting each tire to the hub on the opposite side of the weldment. The tire originally on the outside of the weldment will now be located on the inside of the weldment and vice versa. (The valve stems for 36" row spacing should be facing toward the frame weldment, or toward each other.) Be sure to keep the tire tread positioned in the same direction as before.
6. After the wheels have been tightened to the hubs, swing the frame weldment until the new clamping location is 9" from the original 30" row spacing stop.
7. Tighten the rear of the frame weldment to the grain cart frame using the six 1" x 7-1/2" Gr8 bolts, hex nuts, and clamp plate.
8. Torque all bolts to specifications and repeat on other side.

Lubrication Service Schedule

IMPORTANT: Your grain cart has grease fittings at all critical points. These should be serviced before the grain cart is put into operation.

⚠ WARNING

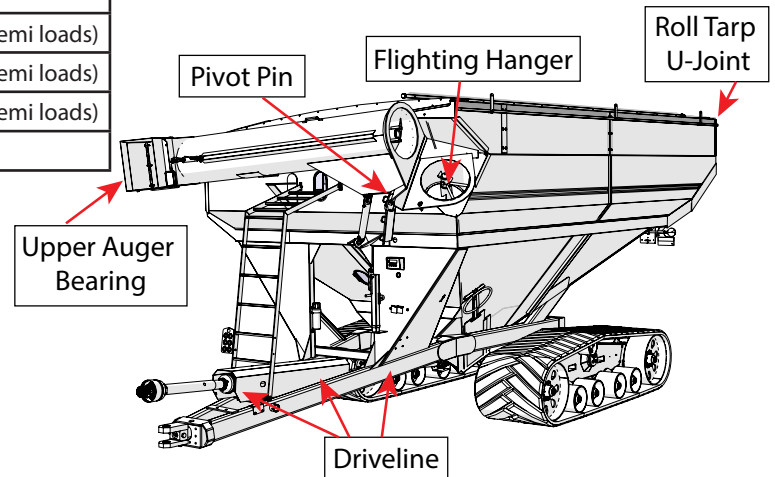
BE CERTAIN THAT ALL POWER IS SHUT OFF BEFORE SERVICING THE GRAIN CART

PTO & DRIVELINE: The grease fittings on the PTO should be serviced after every 8 hours of use. Service the grease fittings on each of the drive bearings and also the universal joint after every 8 hours of use.

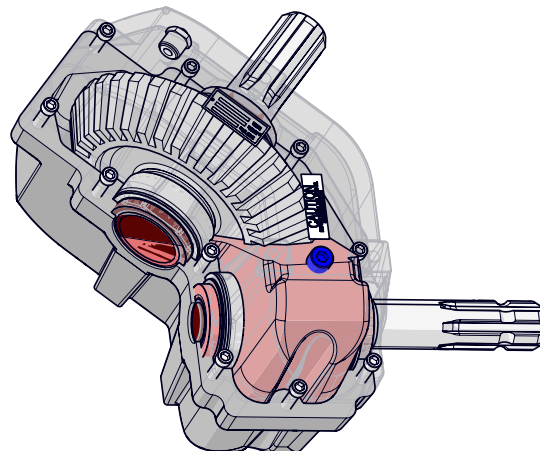
AUGER FOLDING MECHANISM: One grease fitting is located on the pivot pin of the folding auger. This fitting should be serviced after every 8 hours of use. Service the grease fitting on the hanger bushing assembly (top end of the lower auger assembly) after every 8 hours of use or as needed.

SPRING LOADED UPPER AUGER BEARING: Service the grease fitting on the upper auger bearing (located at the top end of the upper auger assembly) after every 8 hours of use. Lubricate the springs and retaining bolts on the bearing before prolonged storage of the grain cart.

| Grease Fittings | |
|----------------------------|--|
| Pivot Pin | Once Annually |
| Roll Tarp U-Joint | Once Annually |
| Upper Auger Flighting | Every 8 hours of PTO run time (roughly 150 semi loads) |
| Driveline | Every 8 hours of PTO run time (roughly 150 semi loads) |
| Vertical Flighting Hangers | Every 8 hours of PTO run time (roughly 150 semi loads) |
| Swivel Ball Hitch | Weekly |



GEARBOX: Gearbox lubricant has been added to the gearbox during final assembly. Recheck the lubricant level before initial operation of the grain cart, then periodically according to use. The fluid level should rest at the inspection plug, pictured in blue below. When filled to the proper level, the gearbox should have 96 ounces of SAE 80W-90 lubricant. Change the oil annually before use.



| Gearbox Lubricant | | | |
|-------------------|--------|-------------|--------------|
| Model | Ounces | Input Shaft | Output Shaft |
| 1401 | 96 | 1-3/4" | 2" |

Routine Maintenance

WARNING

BE CERTAIN ALL POWER IS SHUT OFF WHEN SERVICING THE GRAIN CART

- Repack the bearings in the hub assembly once a year or as needed. Use a good quality LS EP2 Severe Duty, High Shock Load, Lithium based Grease. Also check the seal for wear and replace if necessary.
- Check the grain cart periodically for cracks in welds and for other structural damage. Have cracked welds fixed immediately. Failure to do so could result in extensive damage to the grain cart and greatly reduce the life of the cart.
- Lubricate the slides on the clean-out door.
- Check all hydraulic hoses for wear and replace as necessary.
- Make sure all tires are properly inflated. See "Initial Operation and Maintenance" on page 11 in the Owner's Manual for recommended instructions for tire pressure. It is important that tires are inspected before and after unit loaded.
- Check PTO for wear of plates in the slip clutch. Replace if needed.
- Make sure that all guards and shields are in place before operating the grain cart.

Troubleshooting

WARNING

MAKE SURE THAT ALL POWER IS SHUT OFF BEFORE SERVICING THE GRAIN CART. MAINTENANCE AND REPAIR SERVICE WORK TO BE PERFORMED BY QUALIFIED SERVICE PERSONNEL ONLY.

| Trouble | Possible Cause | Possible Remedy |
|--|--|--|
| Auger will not return to down position or move from stow position | Faulty check valve | Replace check valve |
| | Faulty lock and load solenoid | Disconnect power to lock and load. If the auger is able to move, the lock and load solenoid needs to be replaced |
| | Upper flighting and lower flighting are locked together | Bearing on top of upper auger flighting needs adjusting. When the auger is in the engaged position, there must be 1/8" (0,32cm) gap between bottom of top bearing and top of upper tube housing (See "Adjusting the Lower and Upper Flighting" on page 16) |
| | Feed gate open | Close the feed gate |
| | Lock and Load not operating correctly | Make sure the limit switch on the feed gate indicator assembly is functioning properly |
| Hanger bushing assembly at the top of the lower auger flighting is hot | Top of the hanger bushing assembly is rubbing against the drive dog | Loosen the two bolts and re-adjust the position of the hanger bushing assembly. Re-tighten bolts |
| | | Remove the lower flighting assembly and place a shim between the spline coupler and the gearbox |
| Excessive vibration | Auger flighting or shaft is bent | Straighten or replace auger flighting |
| | Drive shaft is bent | Replace or straighten drive shaft |
| Grain flow stoppage | Bolt sheared in drive dog | Replace bolt in drive dog. Engage upper and lower flighting at a slow rate of speed. (Drive dogs and lugs are being engaged too fast.) |
| | Folding auger before complete stop | Upper and lower flighting are disengaging before auger comes to a complete stop. Replace bolt in the drive dog. Never engage or disengage the upper and lower flighting until the augers come to a complete stop. |
| | PTO key sheared | Replace key and tighten set screw |
| Auger tube is breaking away from the grain cart at the hinge area or the ram in the hydraulic folding cylinder is bent | Upper auger is extended in the upright position while traveling in the field | Repair or place folding cylinder if necessary. Remember to lower auger to the field position after unloading. |

Adjusting the Lower and Upper Flighting

WARNING

MAKE SURE THAT ALL POWER IS SHUT OFF BEFORE ADJUSTING THE FLIGHTING ASSEMBLY.

LOWER FLIGHTING - If the drive-dog and hanger assembly are becoming excessively hot during unloading, the lower flighting and/or hanger may need adjusting. The hanger bushing assembly has elongated holes where it attaches to the outer tube assembly. Loosen the two 1/2" bolts on the hanger bushing assembly. Adjust the hanger either up or down and vertically center it between the flighting and drive dog. Re-tighten the bolts. Make certain that the flighting center and drive-dogs do not rub the hanger bushing assembly, causing them to become hot.

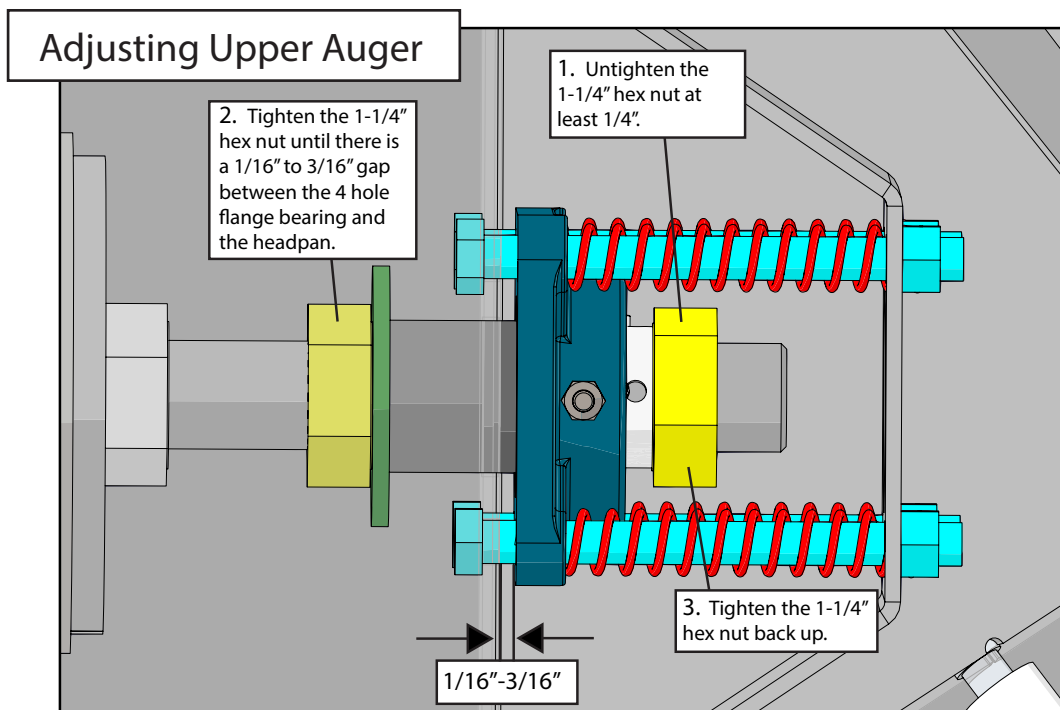
If the hanger can no longer be adjusted by moving it up or down on the elongated holes, both the hanger bushing assembly and the lower flighting will have to be removed. After removing them from the tube assembly, place a shim [between 1/8" (0,32cm) to 3/16" (0,48cm) thick] next to the gearbox and the spline coupler (welded to the lower flighting). Replace the lower flighting and reattach the hanger to the tube assembly. Readjust the hanger assembly. NOTE: The bottom of the lower flighting is not attached to the gearbox with any bolts or set screws but may be 'frozen' fast. Be careful when removing the lower flighting from the gearbox. For easier removal of the lower flighting, keep the gearbox at the bottom intact, remove the two 1/2" bolts from the hanger bushing assembly and pull the lower flighting off of the gearbox.

After adjusting the lower flighting, move the upper auger to the unload position and check the upper flighting for readjustment.

UPPER FLIGHTING - If the upper and lower augers do not properly separate during the unfolding sequence, the upper flighting may need adjusting. Before making an adjustment to the upper flighting, check to see if the lugs and drive dogs on the auger assemblies are locking together. If they are not locked together, check to see if a faulty check valve on the hydraulic cylinder used to raise and lower the upper auger assembly may be causing the problem.

Fold the upper tube assembly into the upright position. Position the upper flighting in the engaged position with the lower flighting. Locate the four-hole flange bearing on the top of the upper auger tube housing. With the upper flighting in the engaged position, check the spacing between the upper bearing and the upper tube housing. We want this bearing to float so there must be an 1/16"-3/16" (0,15cm-0,47cm) space between the base of the four-hole flange bearing and the upper tube housing. If there is NOT a space between the bearing and the upper tube housing, or if there is more than 1/16"-3/16" (0,15cm-0,47cm) space, the upper flighting will need to be adjusted. To adjust the upper flighting, loosen the 1-1/4" hex nuts both above and below the four-hole flange bearing. Move the 1-1/4" hex nuts up or down the threaded shaft on the top of the auger flighting shaft until the bearing moves to approximately 1/16"-3/16" (0,15cm-0,47cm) above the base of the upper tube housing. When the four-hole flange bearing is properly located, tighten both 1-1/4" hex nuts together to secure the bearing position.

If the upper and lower flighting still do not separate properly during the folding sequence, a small bevel may need to be removed from the inside of the lugs where they engage the drive dogs on the auger assemblies. Grind approximately 1/8" (0,32cm) from the corner of the lugs where they touch against the drive dogs.



Removing Dirt from the Restrictors on the Hydraulic Cylinder

WARNING

MAKE SURE THAT ALL POWER IS SHUT OFF AND THE UPPER AUGER TUBE IS IN THE DOWN POSITION BEFORE REMOVING THE RESTRICTORS

Remove restrictors from the 90 degree street elbow on the tip spout hydraulic cylinder. Remove dirt from the fitting to allow hydraulic oil to flow through the restrictor. Reattach the restrictor to the street elbow. Use Teflon sealant tape or equivalent on the threads of the restrictor before re-attaching.

If the restrictor continues to plug with dirt, replace the restrictor or filter the hydraulic oil in your system.

Storage Preparation

IMPORTANT: When the grain cart is not going to be used for a period of time, store the cart in a dry, protected place. Leaving your grain cart outside, open to the weather will shorten its life.

Procedure for Storage Preparation

1. Cover electronic monitor (if equipped) with plastic before washing the grain cart. Wash or clean and completely lubricate the grain cart. See "Lubrication Service Schedule" on page 14.
2. Remove all grain from inside the grain tank, auger tube assemblies, and at the clean-out door.
3. Check the gearbox oil and replace with new SAE 80W-90 gearbox lubricant or equivalent if necessary.
4. Touch up areas where paint may have worn away. Use a good quality primer paint, especially before re-applying graphite paint to the interior slopes of the grain tank.
5. Retract all hydraulic cylinders to prevent the piston rods from rusting.
6. Clean the tires before storage. Inflate the tires at regular intervals.
7. Open the clean-out doors at the base of the grain tank.

Removing from Storage

1. Check the gearboxes to make sure they have the appropriate amount of oil.
2. Inflate the tires to the correct operating pressure.
3. Close the clean out doors at the base of the grain tank.
4. Make sure all safety shields are in the proper position.

Repair Parts List and Diagrams

When performing maintenance work, wear sturdy, rough-soled work shoes and protective equipment for eyes, hair, hands, hearing and head. Follow the Operator's Manual instructions to ensure safe and proper maintenance and repair.

Your local, authorized dealer can supply genuine replacement parts. Substitute parts may not meet original equipment specifications and may be dangerous.

WARNING

MAKE SURE ALL POWER IS SHUT OFF BEFORE PERFORMING ANY MAINTENANCE OR REPAIR WORK.

Wheel Rims and Tires

Wheel Rims for Single Wheel Carts

44x32-10 Hole Wheel Rims

44x32-20 Hole Wheel Rims

Tires for Single Wheel Carts

IF1250/50R32 Lug Tires (Firestone) (201B LI) (for 44x32-10 Hole and 44x32-20 Hole Wheels)

IF1250/50R32 Lug Tires (Alliance) (201A8 LI) (for 44x32-10 Hole and 44x32-20 Hole Wheels)

Wheel Rims for Walking Tandem Dual Carts

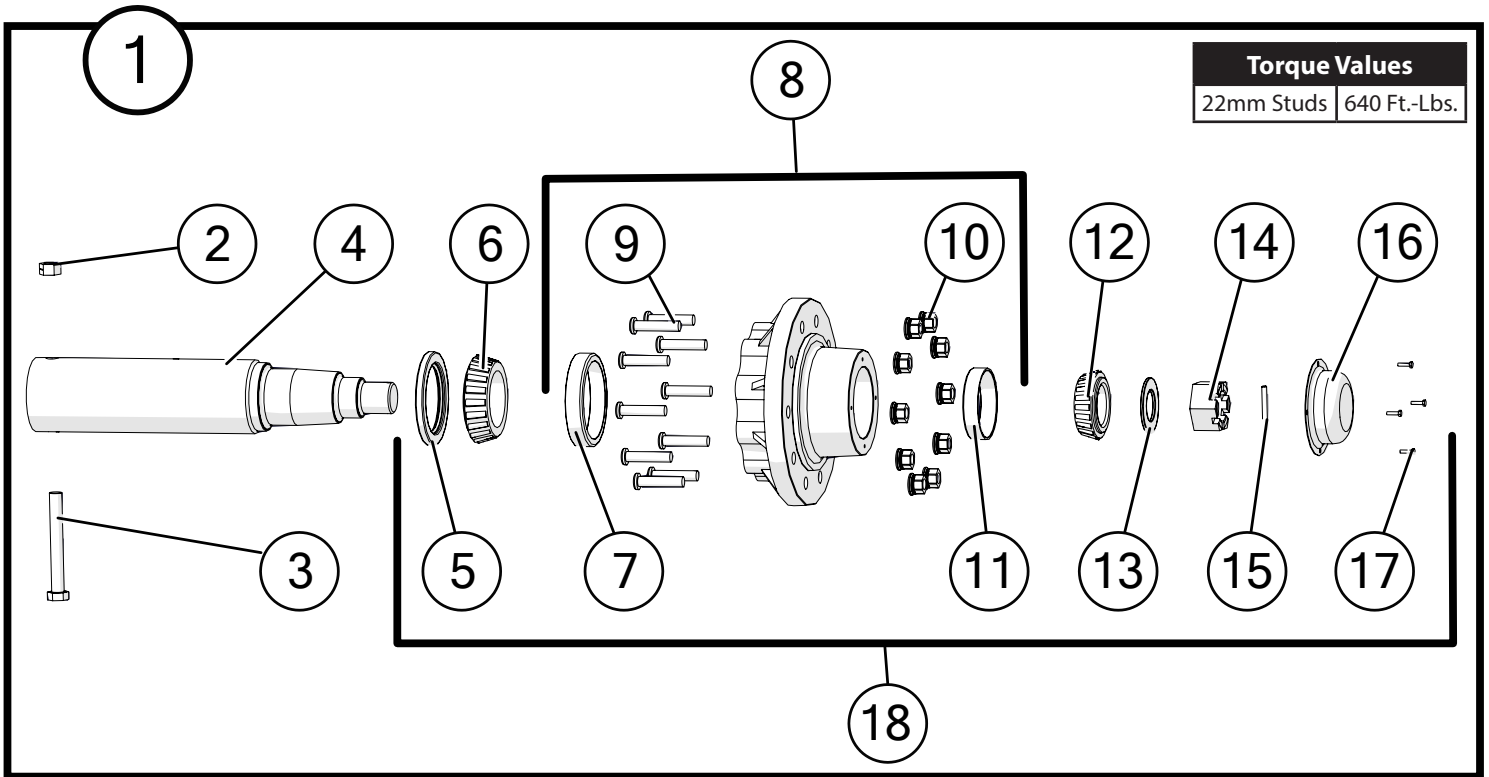
18x42-10 Hole Wheel Rims

Tires for Walking Tandem Dual

IF520/85R42 Lug Tires (Firestone) (169 LI) (for 18x42-10 Hole Wheels)

520/85R42 Lug Tires (Alliance) (169 LI) (for 18x42-10 Hole Wheels)

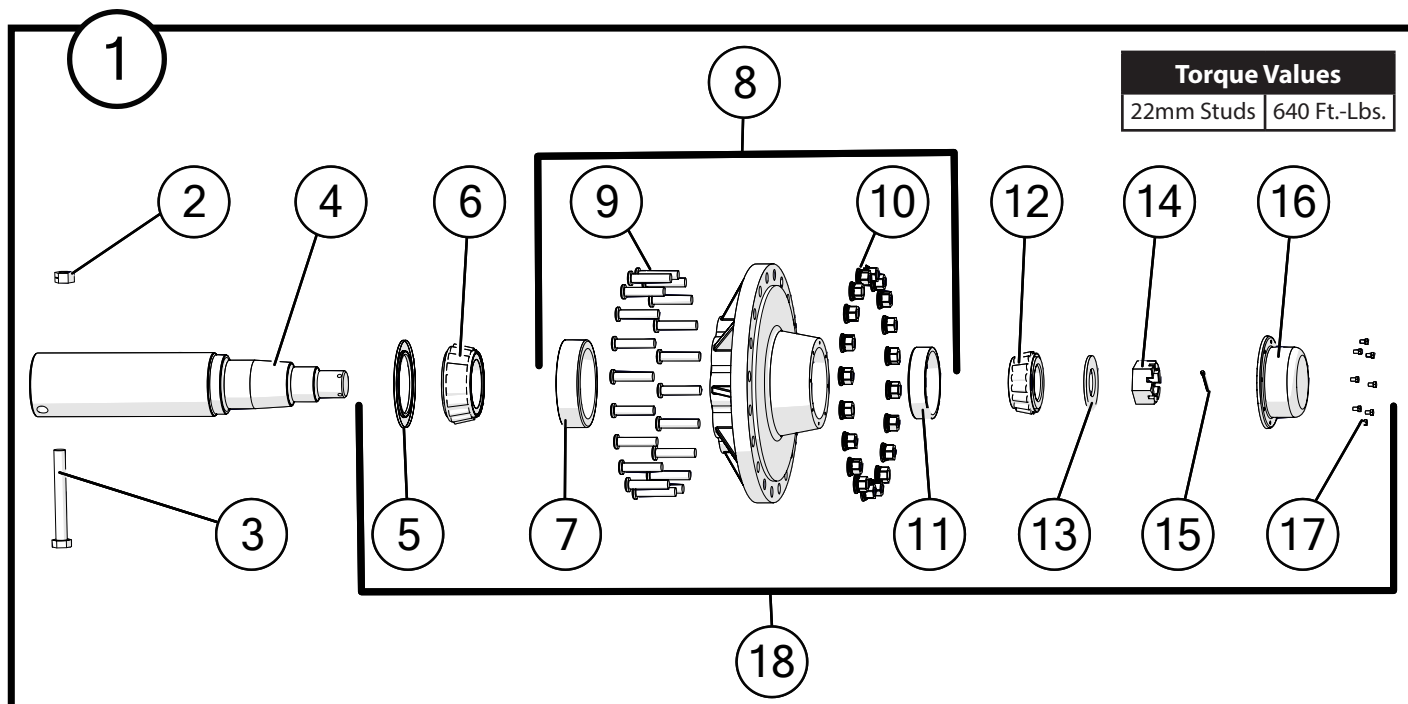
Hub & Spindle Assembly 250-10 (Single Wheels)



NOTE: When installing a hub cap apply silicone around the rim for a better seal.

| Description | | Part No. |
|-------------|---|-----------|
| 1 | G250-10 Hub, Spindle, and Bearings Assembly with 22mm Studs, Races and Nuts (HSA-1075-22) | JM0019927 |
| 2 | 1"-8 Gr2 Z Centerlock Hex Nut | JM0002149 |
| 3 | 1"-8 x 8" Gr5 Z Hex Bolt | JM0001487 |
| 4 | Spindle, 6" x 29-3/8" (628) | JM0019102 |
| 5 | Seal 55179 (Type C) for G250-10, G300-10B, Spring-assisted (CR55179) | JM0019179 |
| 6 | Large Bearing (71455) | JM0019112 |
| 7 | Large Race (71750) | JM0019198 |
| 8 | G250-10 Hub with Races, 22mm Studs & Nuts (13.19 Bolt Circle) (11.13 Pilot) (H25000) | JM0019300 |
| 9 | Stud 22MM 1.5 x 90MM 3.55L 1.005 Knurl (22-MMS) | JM0019178 |
| 10 | Wheel Nut 22mm with Washer (22-MMNW) | JM0019192 |
| 11 | Small Race (653) | JM0019195 |
| 12 | Small Bearing (663) | JM0019177 |
| 13 | 3/16" Spindle Washer (2-1/2" ID, 4-1/2" OD) (H25000) (EM-25M) | JM0019106 |
| 14 | 2-7/16"-12 Gr5 Z Slotted Spindle Nut (SF-2512) | JM0019108 |
| 15 | 3/8" x 3-1/2" Z Roll Pin (3754) | JM0020001 |
| 16 | Dust Cap with Gasket (Bolt-on) 7-3/4" OD (D-25000) | JM0019109 |
| 17 | 1/4"-20 x 1" Gr5 Z Hex Bolt | JM0002095 |
| 18 | G250-10 Hub, Seal, Bearings, Races, Studs, Nuts and Dust Cap | JM0048131 |

Hub & Spindle Assembly 550-20 (Single Wheels-20 Bolt Hubs)



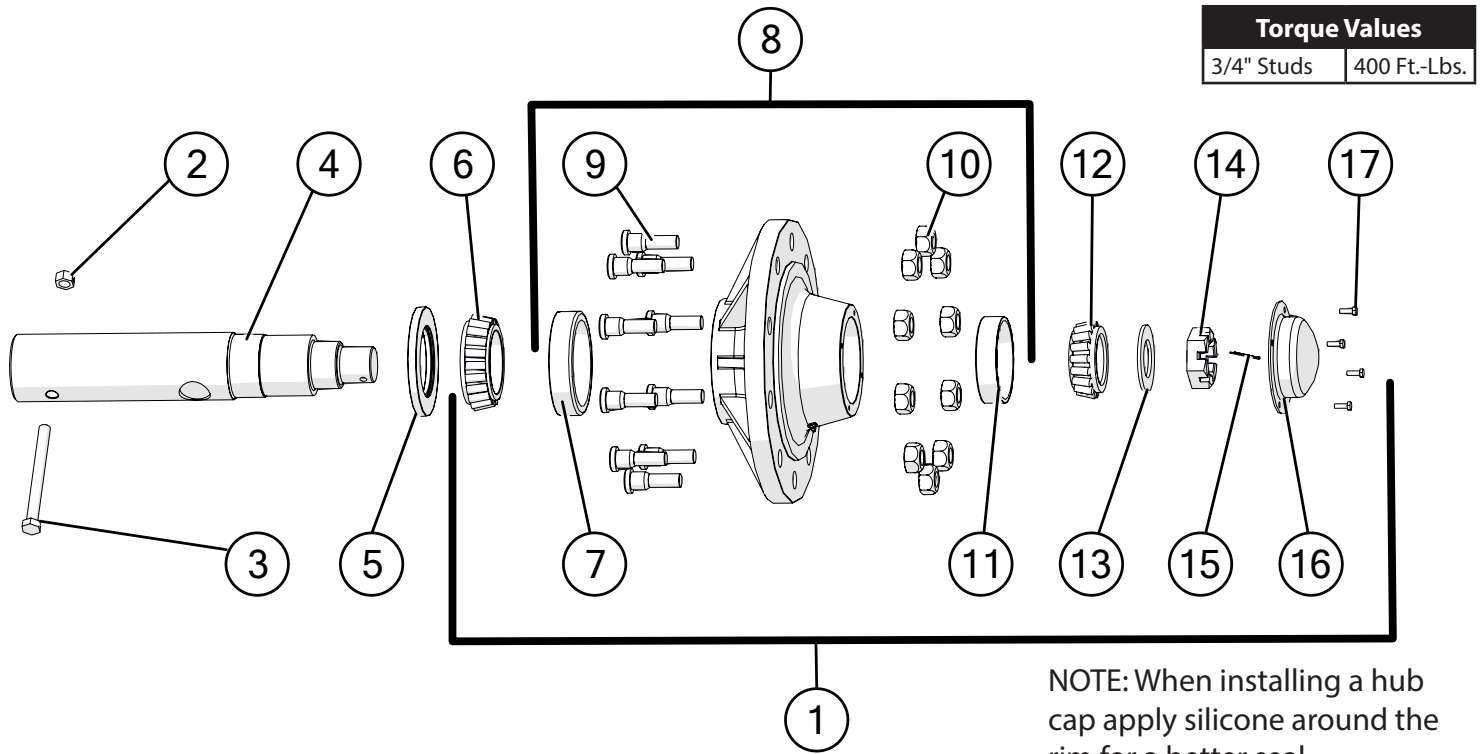
NOTE: If the dust cap has a GKN symbol call 419-375-2376 for parts.



NOTE: When installing a hub cap apply silicone around the rim for a better seal.

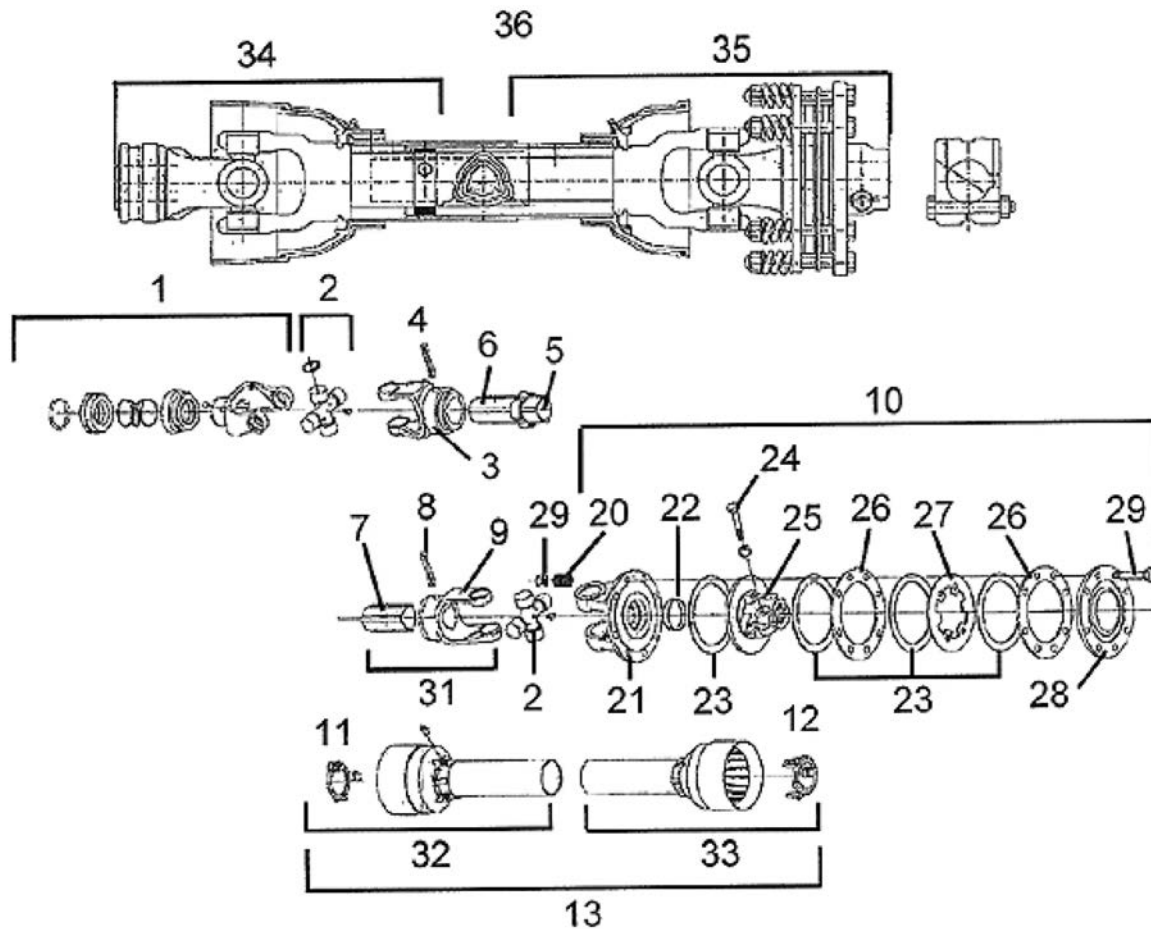
| Description | | Part No. |
|-------------|--|-----------|
| 1 | G550-20 Hub, Spindle, and Bearings Assembly with 22mm Studs, Races, and Nuts | JM0034272 |
| 2 | 1"-8 Gr2 Z Centerlock Hex Nut | JM0002149 |
| 3 | 1"-8 x 8" Gr5 Z Hex Bolt | JM0001487 |
| 4 | Spindle, 6" x 29-3/8" for 20 Bolt Hub | JM0019723 |
| 5 | Grease Seal, G550-20 | JM0019219 |
| 6 | Large Bearing (938) | JM0019214 |
| 7 | Large Race (930) | JM0019211 |
| 8 | G550-20 Hub with Studs, Lugs, and Races | JM0019209 |
| 9 | Stud 22MM 1.5 x 90MM 3.55L 1.005 Knurl (22-MMS) | JM0019178 |
| 10 | Wheel Nut 22mm with Washer (22-MMNW) | JM0019192 |
| 11 | Small Race (832) | JM0019212 |
| 12 | Small Bearing (842) | JM0019215 |
| 13 | 2-1/2" USS Flat Washer | JM0030690 |
| 14 | 2-1/2"-12 Gr5 Z Castle Hex Nut | JM0034274 |
| 15 | 3/16" x 2-1/2" Cotter Pin | JM0027684 |
| 16 | G550-20 Dust Cap | JM0019217 |
| 17 | 5/16"-18 x 1-1/2" Gr5 Z Hex Bolt | JM0016674 |
| 18 | G550-20 Hub, Seal, Bearings, Races, Studs, Nuts and Dust Cap | JM0048276 |

Hub & Spindle Assembly W-881 (Walking Tandem Dual Wheels)



| Description | | Part No. |
|-------------|--|-----------|
| 1 | W-881 Hub Assembly Complete with 3/4" Studs and Nuts (Less Seal and Spindle) | JM0050402 |
| 2 | 1"-8 Gr2 Z Centerlock Hex Nut | JM0002149 |
| 3 | 1"-8 x 7" Gr5 Z Hex Bolt | JM0016689 |
| 4 | Spindle, 4-1/2" x 20-1/4" for Walking Tandem Dual Wheel or Fully Adjustable Axle (281900S) | JM0019937 |
| 5 | Seal (4-1/4" ID, 6" OD) for Hub (CR-43771) | JM0018955 |
| 6 | Large Bearing (HM218248) | JM0018849 |
| 7 | Large Race (HM218210) | JM0018848 |
| 8 | W-881 Hub with Large and Small Races, 3/4" Studs & Nuts (11.13 Pilot) | JM0020510 |
| 9 | Wheel Stud (3/4"-16 x 1-3/4") 913564 | JM0018957 |
| 10 | Wheel Nut 3/4"-16 | JM0018958 |
| 11 | Tapered Bearing Cup (HM212011) | JM0018854 |
| 12 | Tapered Bearing Cone (HM212049) | JM0018852 |
| 13 | 2-1/8" ID, 3-3/4" OD Flat Washer (3/16") | JM0015900 |
| 14 | 2"-12 Gr5 Z Castle Hex Nut (912973) | JM0015899 |
| 15 | 3/8" x 2-3/4" Z Roll Pin (905945) | JM0018956 |
| 16 | Dust Cap 6-1/4" OD (for W-881 & W-891 Hub) (909921) | JM0018954 |
| 17 | 1/4"-20 x 1" Gr5 Z Hex Bolt | JM0002095 |

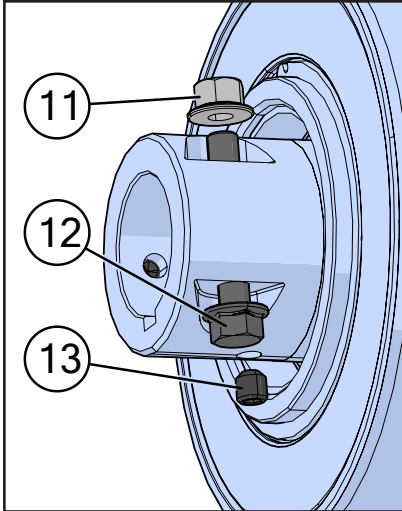
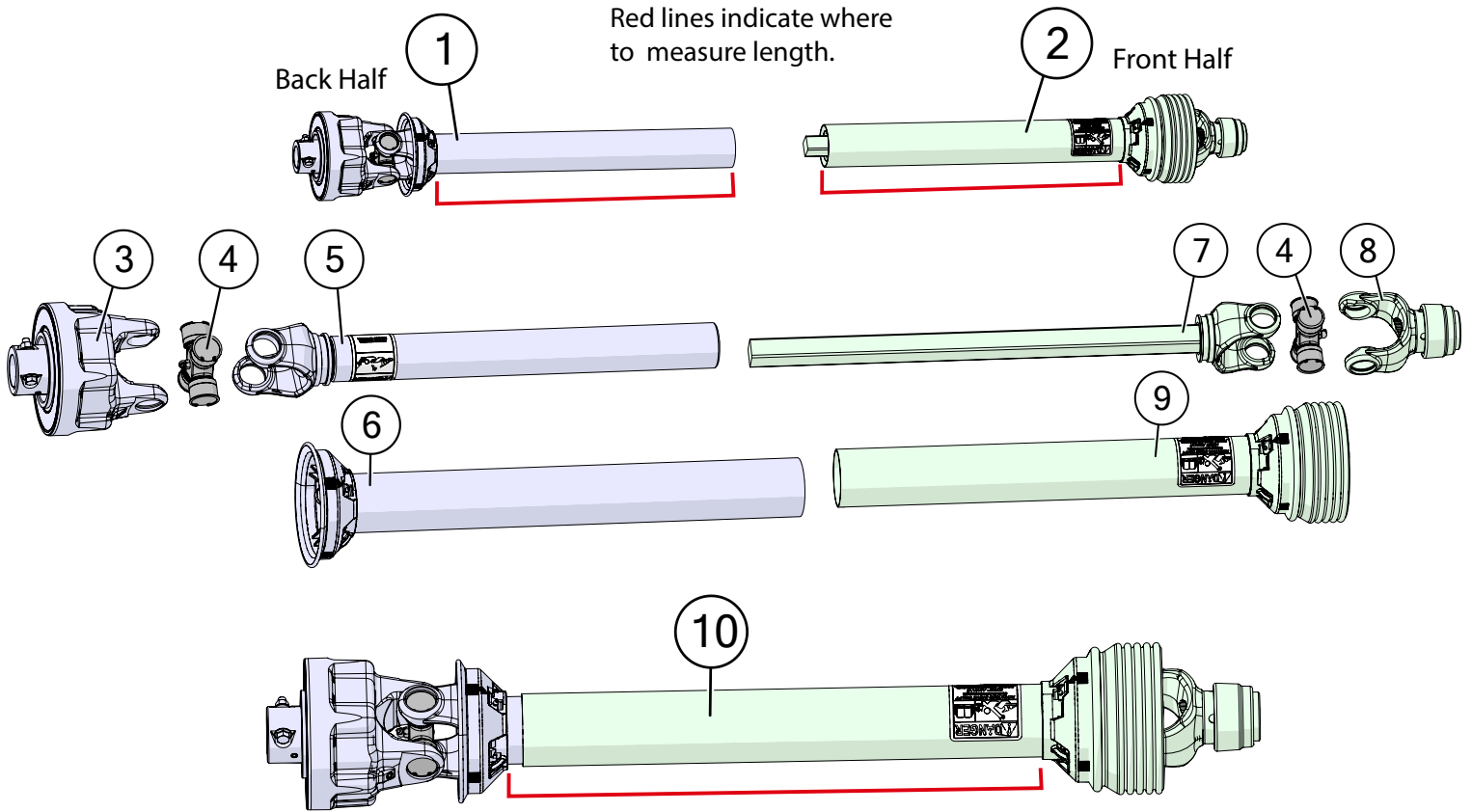
Power Take-Off (PTO) Shaft Assembly - Comer



| Description | Part No. |
|--|-----------|
| 1 Complete Comer 1-3/4" Collar Yoke C15 (28428) | JM0025180 |
| 1 Complete Comer 1-3/8" Collar Yoke C15 (28426) | JM0025181 |
| 2 Cross Journal Set (Comer PTO) (18130) | JM0025144 |
| 3 Outer Yoke (Comer PTO) (18133) | JM0025145 |
| 4 Roll Pin for Outer Tube (Comer PTO) (00243) | JM0025146 |
| 5 Bushing with Grease Nipple (Comer PTO) (18210) | JM0025147 |
| 6 Complete Outer Tube (Comer PTO) (30710) | JM0025148 |
| 7 Inner Tube (Comer PTO) (90010) | JM0025149 |
| 8 Roll Pin for Inner Tube (Comer PTO) (00271) | JM0025150 |
| 9 Inner Yoke (Comer PTO) (18134) | JM0025151 |
| 10 Complete Disc Clutch (Comer PTO) (84033) | JM0025152 |
| 11 Retain Collar for Outer Tube (Comer PTO) (19121) | JM0025153 |
| 12 Retain Collar for Inner Tube (Comer PTO) (19122) | JM0025154 |
| 13 Complete Guard (Comer PTO) (27820) | JM0025155 |
| 20 Spring (Comer PTO) (Compression for Slip Clutch) 7/8" x 1-1/2" (14022) | JM0025162 |

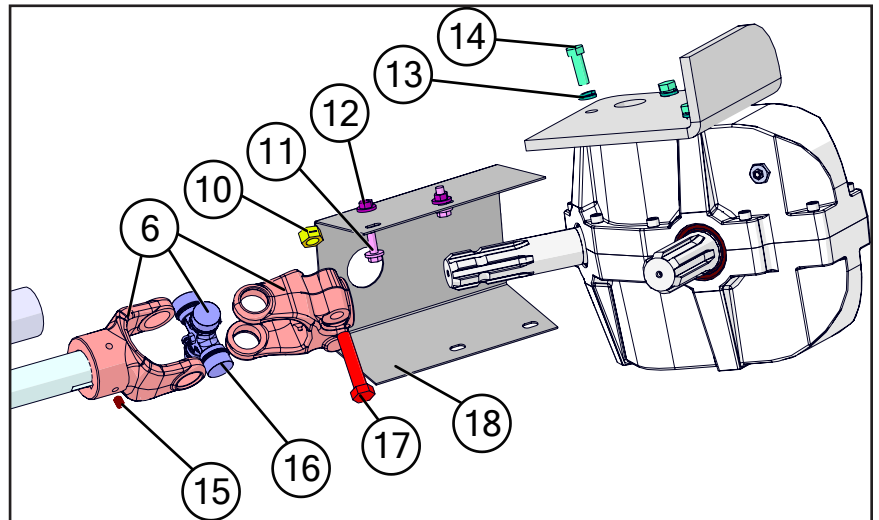
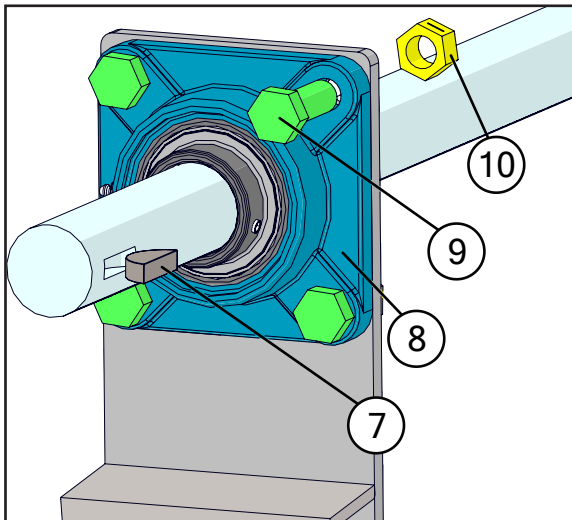
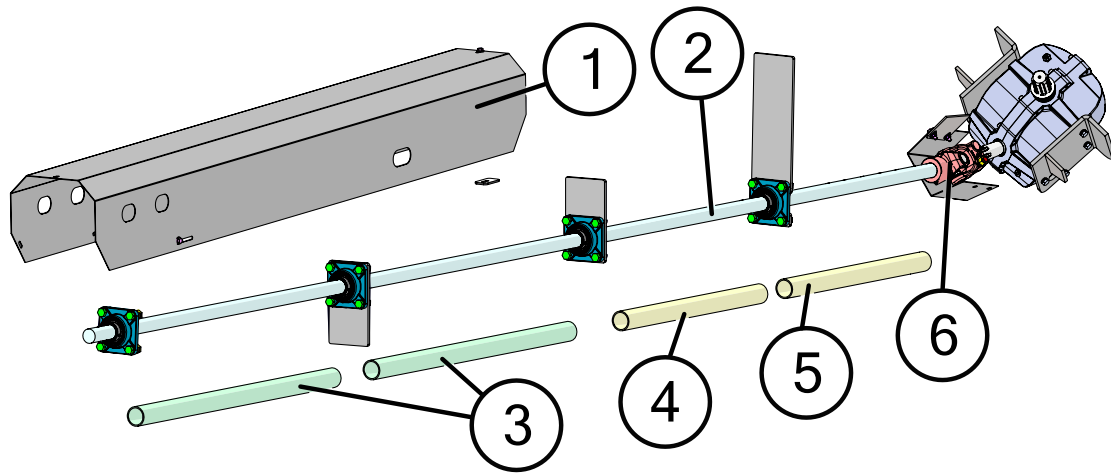
| Description | Part No. |
|---|-----------|
| 21 Flanged Yoke (Comer PTO) (18016) | JM0025163 |
| 22 Bushing (Comer PTO) (19019) | JM0025164 |
| 23 Lining Ring (Comer PTO) 3-1/2" ID x 6" OD (19018) | JM0025165 |
| 24 M12-1.25 x 65 Bolt and Lock Nut (Comer PTO) (00502) | JM0025166 |
| 25 Clutch Support F40 (Comer PTO) (18453) | JM0025167 |
| 26 Inner Plate (Comer PTO) (19014) | JM0025168 |
| 27 Intermediate Plate (Comer PTO) (19115) | JM0025169 |
| 28 Pressure Plate (Comer PTO) (19116) | JM0025170 |
| 29 M10-1.5 x 100 Bolt and Nut (Comer PTO) (00548) | JM0025171 |
| 30 Female Tube & Yoke (Comer PTO) (80039) | JM0025172 |
| 31 Male Tube & Yoke with Roll Pin (Comer PTO) (80529) | JM0025173 |
| 32 Half Female Guarding (Comer PTO) (67820) | JM0025174 |
| 33 Half Male Guarding (Comer PTO) (37820) | JM0025175 |
| 34 Front Half Comer PTO, 1-3/4" (21110) | JM0025176 |
| 34 Front Half Comer PTO, 1-3/8" (21110-138) | JM0025177 |
| 35 Back Half Comer PTO, 1-3/4" Including Clutch (36510) | JM0025178 |
| 36 Complete 1-3/4" Comer PTO (103600) | JM0020024 |
| 36 Complete 1-3/8" Comer PTO (103555) | JM0020021 |
| 37 Tee Key for Plastic Retain Collar (PTK-2) | JM0025179 |

Power Take-Off (PTO) Shaft Assembly - Weasler



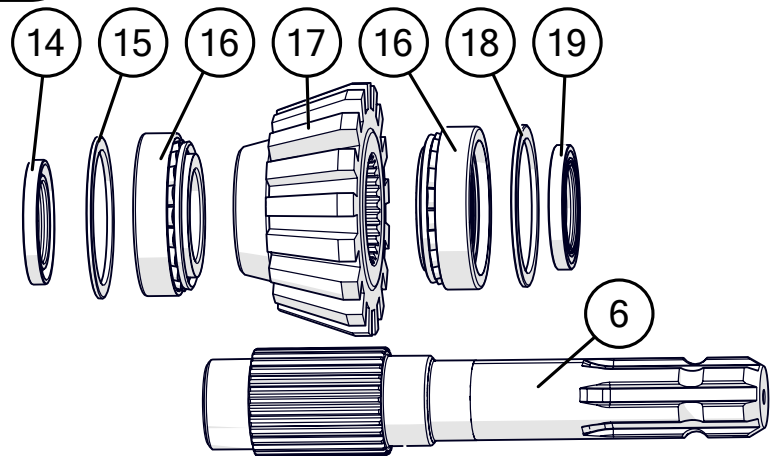
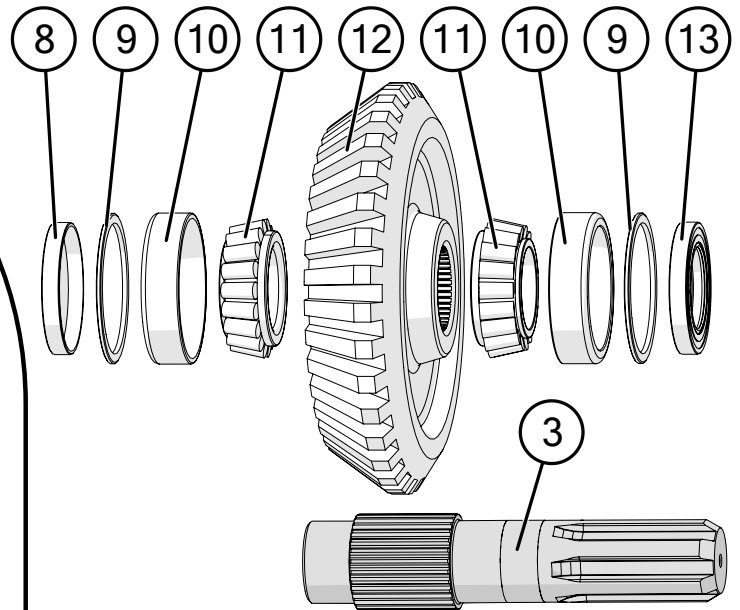
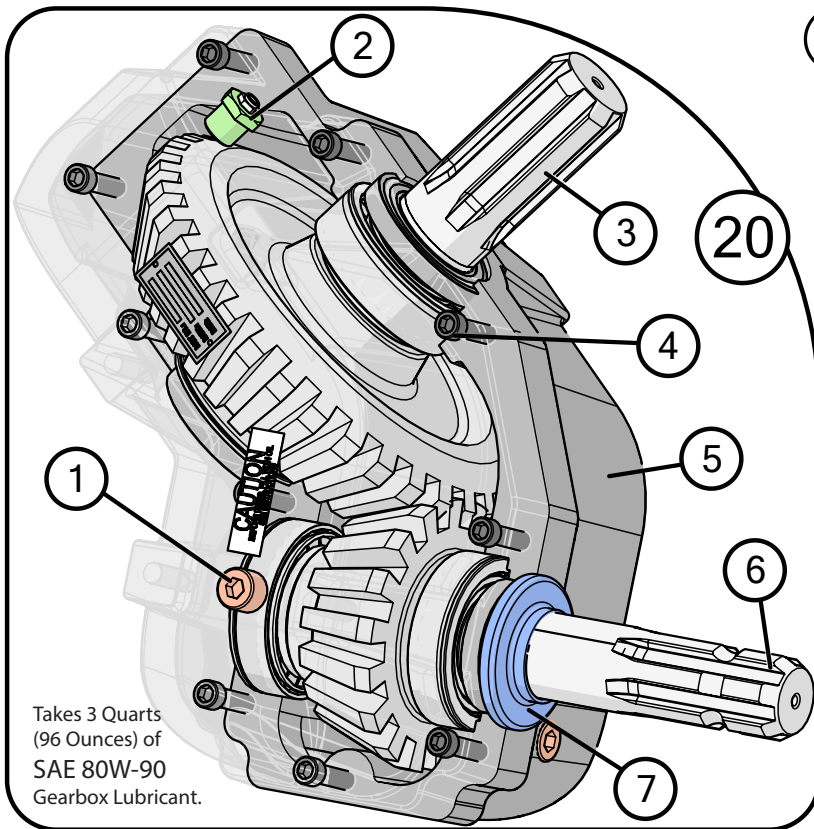
| | Description | Part No. |
|----|--|-----------|
| 1 | Back Half Weasler PTO 24k (1-3/4") (Auto Clutch) 25-3/4" | JM0018513 |
| 1 | Back Half Weasler PTO 24k (1-3/4") (Auto Clutch) (XL) 31-3/4" | JM0030331 |
| 2 | Front Half Weasler PTO 24k (1-3/4") (Auto Clutch) 25" | JM0018514 |
| 2 | Front Half Weasler PTO 24k (1-3/4") (Auto Clutch) (XL) 30-1/4" | JM0030330 |
| 2 | Front Half Weasler PTO 24k (1-3/8") (Auto Clutch) 25" | JM0024367 |
| 2 | Front Half Weasler PTO 24k (1-3/8") (Auto Clutch) (XL) 30-1/4" | JM0030640 |
| 3 | Auto Clutch for Weasler 24k | JM0018500 |
| 4 | 55E Cross Kit (Auto Clutch PTO) | JM0018449 |
| 5 | Yoke, Tube & Sleeve (24k Weasler Auto Clutch) (55E) | JM0018519 |
| 5 | Yoke, Tube & Sleeve (XL) 24k Weasler | JM0031647 |
| 6 | 24k Weasler Auto Clutch Back Guard (25-3/4") | JM0018517 |
| 6 | 24k Weasler XL Auto Clutch Back Guard (31-3/4") | JM0030645 |
| 7 | 24k Yoke & Shaft Assembly (Weasler Auto Clutch) (55E) | JM0018520 |
| 7 | 24k Yoke & Shaft Assembly (XL) Weasler | JM0031648 |
| 8 | Spring Lock Yoke (1-3/4" PTO) (Weasler) | JM0018506 |
| 8 | Spring Lock Yoke (1-3/8" PTO) (Weasler) | JM0024353 |
| 9 | 24k Weasler Auto Clutch Front Guard (25") | JM0018518 |
| 9 | 24k Weasler XL Auto Clutch Front Guard (30-1/4") | JM0030642 |
| 10 | Complete 1-3/4" Weasler PTO 24k (Auto Clutch) 25-3/4" | JM0018443 |
| 10 | Complete 1-3/4" Weasler PTO 24k (Auto Clutch) (XL) 31-3/4" | JM0030332 |
| 10 | Complete 1-3/8" Weasler PTO 24k (Auto Clutch) 25-3/4" | JM0024333 |
| 10 | Complete 1-3/8" Weasler PTO 24k (Auto Clutch) (XL) 31-3/4" | JM0030641 |
| 11 | Lock Nut 3/8"-16 (55E PTO) (11-30028) | JM0054592 |
| 12 | 3/8"-16 x 2-1/4" Hex Bolt (55E PTO) | JM0054591 |
| 13 | Set Screw 3/8"-16 x .38" | JM0018465 |

Driveline Assembly



| | Description | Part No. |
|----|--|-----------|
| 1 | 97" PTO and Drive Shaft Guard (1326, 1401) | JM0017577 |
| 2 | 190" x 1-3/4" Drive Shaft (DS-134190) | JM0026235 |
| 3 | 2" x 45" PVC | JM0054224 |
| 4 | 2" x 31" PVC | JM0018799 |
| 5 | 2" x 33" PVC | JM0039459 |
| 6 | 44 Series U-Joint (252288) - Weasler 44063-A1 | JM0017957 |
| 7 | 3/8" x 1-1/2" Half Moon Key | JM0018772 |
| 8 | 1-3/4" 4 Bolt Flange Bearing, 5/8" Bolt Hole (UCF-20928) | JM0018774 |
| 9 | 5/8"-11 x 1-3/4" Gr5 Z Hex Bolt | JM0016681 |
| 10 | 5/8"-11 Gr2 Z Centerlock Hex Nut | JM0002146 |
| 11 | 3/8"-16 x 1" Gr5 Z SF Hex Bolt | JM0002092 |
| 12 | 3/8"-16 Gr5 Z SF Hex Nut | JM0002152 |
| 13 | 1/2" Gr2 Z Lock Washer | JM0019021 |
| 14 | 1/2"-13 x 1-1/2" Gr5 Z Hex Bolt | JM0002100 |
| 15 | 3/8"-16 x 1/2" Hex Head Set Screw | JM0019044 |
| 16 | Cross Kit (U-Joint) (44R) (CK-44R) | JM0017958 |
| 17 | 5/8"-11 x 3" Gr5 Z Hex Bolt | JM0002105 |
| 18 | U-Joint Shield | JM0012698 |

130 Degree Gearbox Assembly - Weasler



In 2019, Weasler changed from quarter spline press-in fit to the splined fit of the current edition. When purchasing parts, ensure your shaft will fit the gear. Gearboxes with the press-in fitting will have "6050-0359" on the nameplate. Gearboxes with the splines will have "6050-0717".



Current - Splined



Part # on gearbox:
6050-0717

Old - Press-in



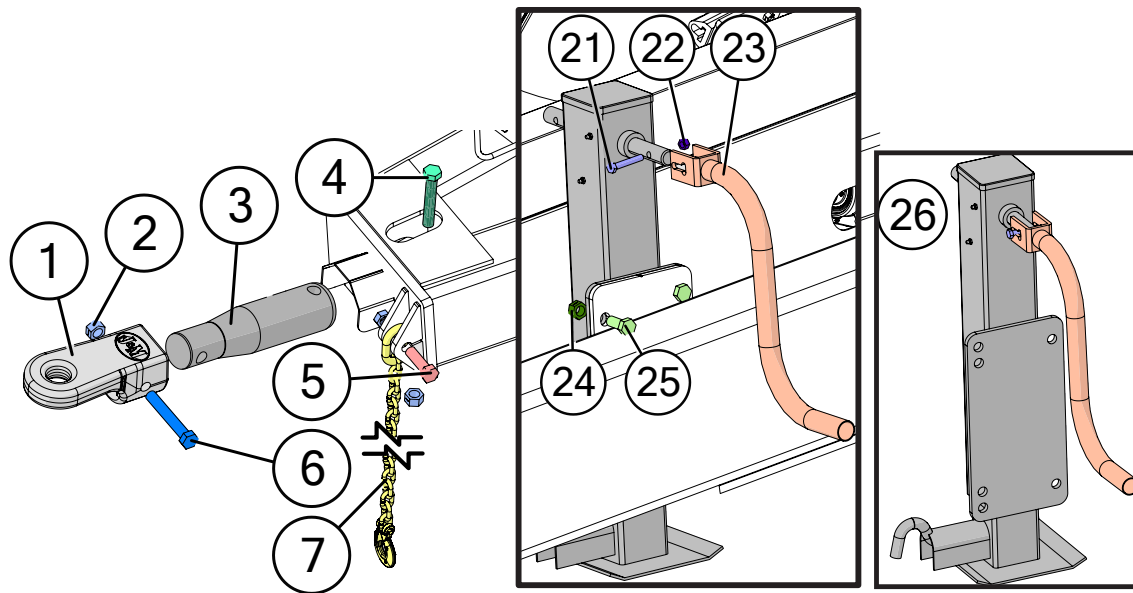
Part # on gearbox:
6050-0359



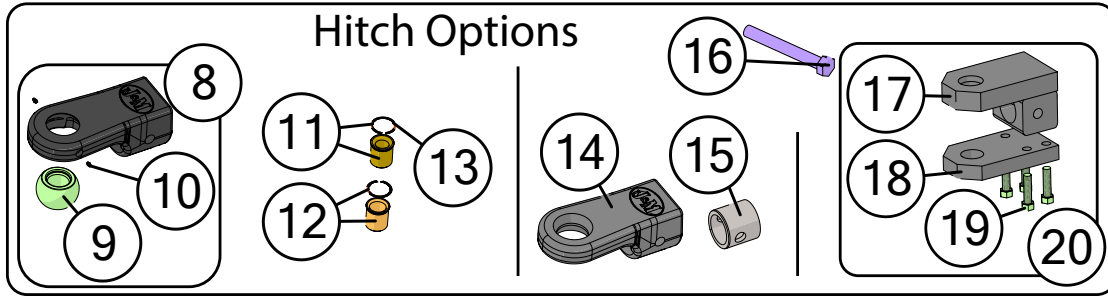
130 Degree Gearbox Assembly (Weasler)

| | Description | Part No. |
|----|--|-----------|
| 1 | 1/2"-14 NPT Pipe Plug for Weasler Gearbox (72-20007) | JM0025068 |
| 2 | 1/2" NPT Bushing 1/8" NPT Relief Plug (72-20011) | JM0025067 |
| 3 | 2" Output Shaft - Splined (09-70194) | JM0046062 |
| 4 | Cap Screw 3/8"-16 UNC x 2-1/2", Gr5 for Weasler Gearbox (72-0002) | JM0025069 |
| 5 | Housing Set For Weasler Gearbox (70-001114) | JM0025053 |
| 6 | 1-3/4" Input Shaft - Splined (09-70193) | JM0080378 |
| 7 | Gearbox Exterior Dust Seal 1-3/4" ID | JM0049020 |
| 8 | End Cap Seal (3-3/16" x 7/16") for Weasler Gearbox (71-40079) | JM0025063 |
| 9 | Spacer for Weasler Gearbox (71-50072) | JM0025066 |
| 10 | Bearing Cup (3720) for Weasler Gearbox (71-20033) | JM0025056 |
| 11 | Bearing Cone (3780) for Weasler Gearbox (71-20044) | JM0025055 |
| 12 | Gear - 34 Teeth - Splined (71-06135) | JM0046061 |
| 13 | Seal (2 x 3.196 x 0.4333) for Weasler Gearbox (71-40080) | JM0025062 |
| 14 | End Cap Seal (2.00 x 0.276) for Weasler Gearbox (71-40016) | JM0025060 |
| 15 | Spacer for Weasler Gearbox (71-50160) | JM0025064 |
| 16 | Bearing and Race Set (32210) for Weasler Gearbox (71-20017) | JM0025054 |
| 17 | Gear - 17 Teeth - Splined (71-06134) | JM0046059 |
| 18 | Spacer for Weasler Gearbox (71-50161) | JM0025065 |
| 19 | Input Shaft Seal (1-3/4" x 2-23/32" x 33/64") for Weasler Gearbox (71-40052) | JM0025061 |
| 20 | 130 Degree Gearbox (1-3/4" Input, 2" Output) (Weasler) (130-22W) | JM0018677 |

Hitch and Jack Assembly

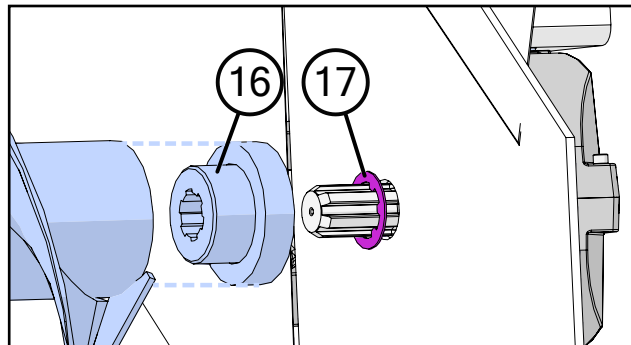
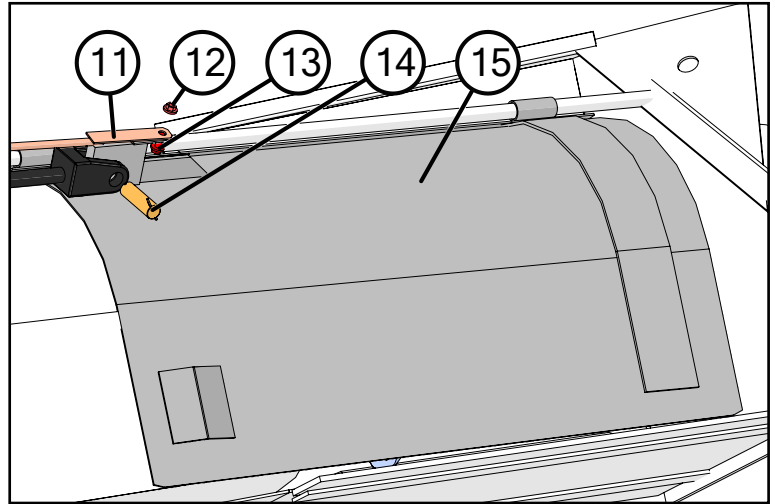
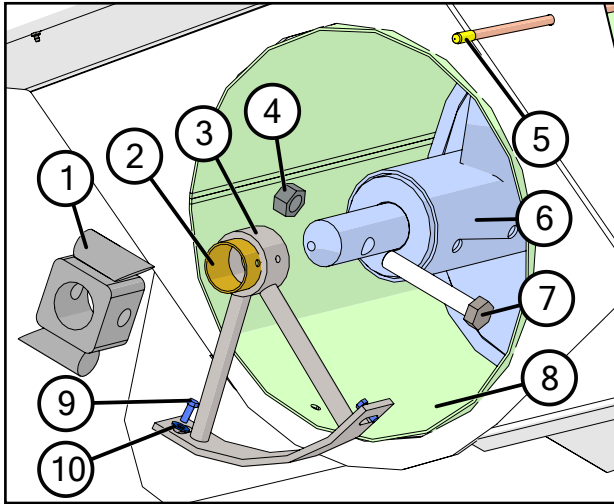
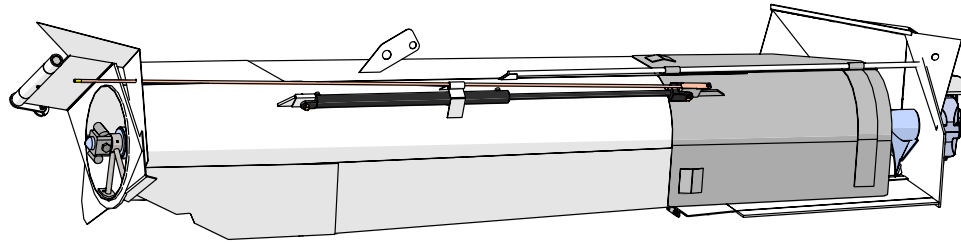


Hitch Options



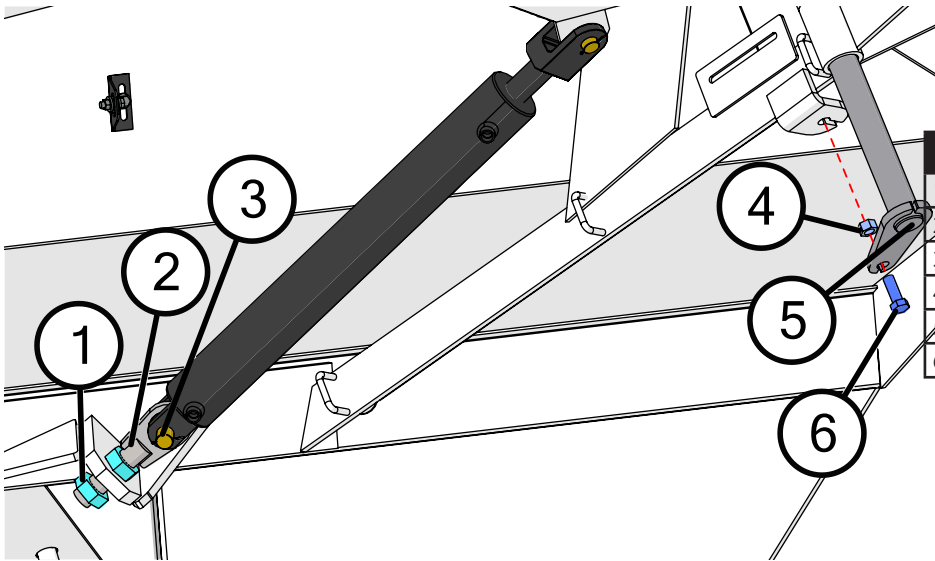
| Description | Part No. |
|--|-----------|
| 1 2-7/8" Cast Spade Hitch CAT 4 - 2" Pin (GC) | JM0074581 |
| 2 1"-8 Gr2 Z Centerlock Hex Nut | JM0002149 |
| 3 3-3/4" Neck Down to 2-7/8" Non Scale Bar | JM0073447 |
| 4 1"-8 x 6" Gr8 YZ Hex Bolt | JM0074245 |
| 5 1"-8 x 4" Gr8 YZ Hex Bolt | JM0074434 |
| 6 1"-8 x 6" Gr8 YZ Hex Bolt - 1-1/2" Thread | JM0078449 |
| 7 40k Lb Safety Chain (83") | JM0029261 |
| 8 2-7/8" Cast Swivel Ball Spade Hitch CAT 4 - 2" Pin (GC) | JM0076296 |
| 9 CAT 4 (2") Swivel Hitch Ball | JM0077126 |
| 10 1/4"-28 Male, 0.547 Length, Zinc Grease Fitting | JM0074580 |
| 11 Sleeve Kit for 1.25" Drawpin (CAT 2) | JM0077917 |
| 12 Sleeve Kit for 1.5" Drawpin (CAT 3) | JM0077906 |
| 13 2-1/4" Housing Diameter VH-225-S02 Retaining Ring | JM0077338 |
| 14 3-3/4" Cast Spade Hitch CAT 5 - 2-3/4" Pin (GC) | JM0077938 |
| 15 Hitch Sleeve Reducer (3-3/4" to 2-7/8") | JM0077921 |
| 16 1"-8 x 8" Gr8 YZ Hex Bolt | JM0042652 |
| 17 Bolt On Spade Hitch with 2-1/4" Hourglass Pin Hole | JM0017978 |
| 18 Tang with 4 Bolts (2-1/4" Hourglass Pin Hole) | JM0017976 |
| 19 3/4"-16 x 3" Gr8 YZ Fine Thread Hex Bolt | JM0002107 |
| 20 Clevis Bolt-On Hitch Assembly (2-1/4" Hourglass Pin Hole) | JM0018191 |
| 21 3/8"-16 x 2-1/2" Gr5 Z Hex Bolt | JM0001647 |
| 22 3/8"-16 Gr2 Z Centerlock Hex Nut | JM0001512 |
| 23 Jack Handle for 10,000 lb and Up | JM0037953 |
| 24 5/8"-11 Gr2 Z Centerlock Hex Nut | JM0002146 |
| 25 5/8"-11 x 1-1/2" Gr5 Z Hex Bolt | JM0002103 |
| 26 Jack Stand Assembly with 8" Tall Frame Tube Plate (10,000 lbs.) | JM0020936 |

Lower Auger Assembly



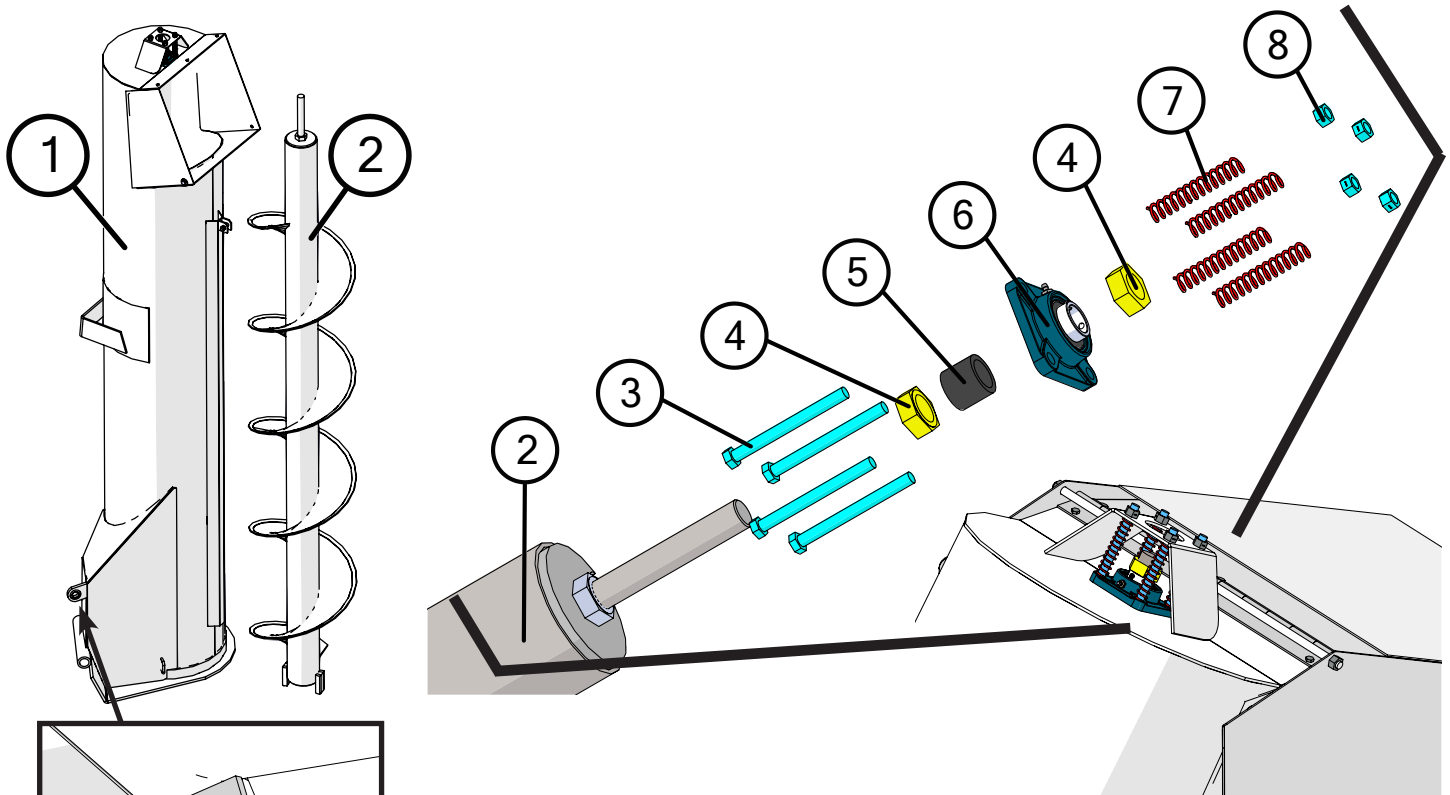
| | Description | Part No. |
|----|--|-----------|
| 1 | 22" Drive Dog Weldment 2-1/2" ID (DDW-21222) | JM0002919 |
| 2 | 2-1/2" ID Bronze Bushing (BB-212) | JM0016841 |
| 3 | 22" Hanger Bushing Assembly with Bronze Bushing (HBA-22) | JM0019656 |
| 4 | 1"-8 Gr5 Z Hex Nut | JM0002149 |
| 5 | S-Cap Yellow - 1/2" ID x 1-1/4" x 21/32" (REC-1) | JM0016842 |
| 6 | 22" Lower Flighting x 162-3/4" Long (LF-22GS-162) | JM0019676 |
| 7 | 1"-8 x 6" Gr5 Z Hex Bolt | JM0074245 |
| 8 | 22" Lower Auger Liner 132" (1326, 1401) (LAL-22135) | JM0026576 |
| 9 | 3/8"-16 x 1" Gr8 YZ Hex Bolt | JM0001485 |
| 10 | 3/8" ID, 1" OD Z Flat Washer | JM0003061 |
| 11 | 1/2" Gate Indicator Rod (133-1/2" Rod Length) (1326, 1401) | JM0019396 |
| 12 | 3/8"-16 Gr5 Z SF Hex Nut | JM0002152 |
| 13 | 3/8"-16 x 1" Gr5 Z SF Hex Bolt | JM0002092 |
| 14 | 1" x 3" Clevis Pin with Cotter Pins | JM0019407 |
| 15 | Auger Gate Cover Assembly (1051, 1151, 1326, 1401) | JM0017850 |
| 16 | Spline Coupler 2" ID x 5-15/32" OD Weldment (Weasler Gearbox) (SC-334x3) | JM0009701 |
| 17 | 2" Output Shaft Gearbox Spline Washer (3" OD) | JM0020638 |

Top Auger Linkage



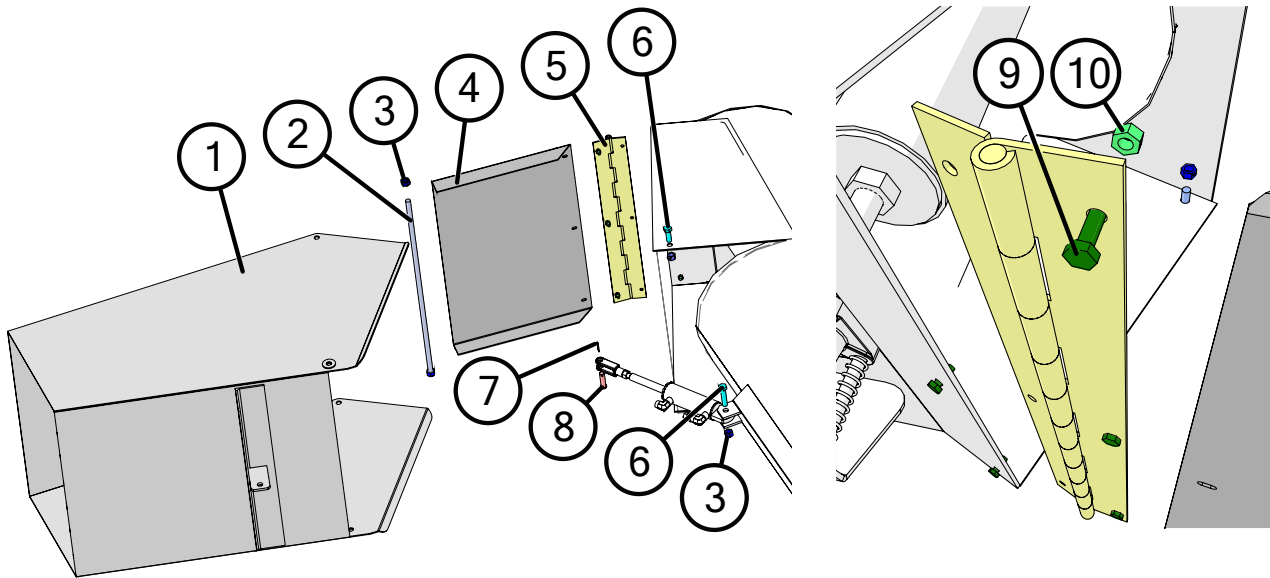
| | Description | Part No. |
|---|-------------------------------------|-----------|
| 1 | 1-1/4"-12 PN Gr2 Hex Jam Nut | JM0001606 |
| 2 | HD Adjustable Pac Man Weldment | JM0021417 |
| 3 | 1" x 3" Clevis Pin with Cotter Pins | JM0019407 |
| 4 | 5/8"-11 Gr2 Z Centerlock Hex Nut | JM0002146 |
| 5 | 22" Top Auger Hinge Pin Weldment | JM0025101 |
| 6 | 5/8"-11 x 1-3/4" Gr5 Z Hex Bolt | JM0016681 |

Top Auger Assembly



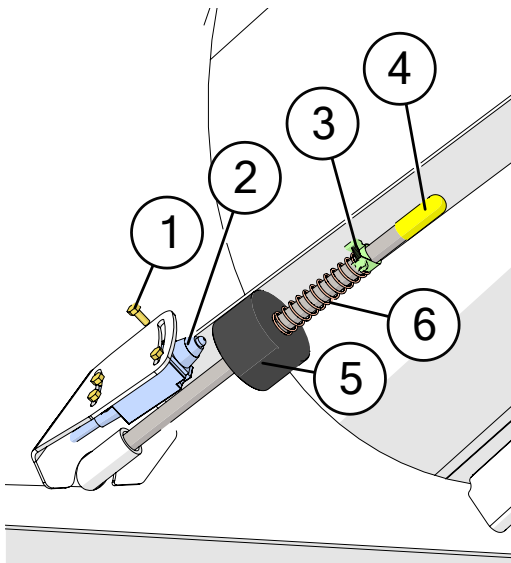
| | Description | Part No. |
|---|--|------------|
| 1 | 22" Upper Auger Tube Weldment (UAH-22GS) | JM0018304* |
| 2 | 22" Upper Flighting 6" x 121-3/8" RH (UF-22GS) | JM0019702 |
| 3 | 1/2"-13 x 5-1/2" Gr5 Z Hex Bolt | JM0001498 |
| 4 | 1-1/4"-12 PN Gr2 Hex Jam Nut | JM0001606 |
| 5 | Top Auger Collar 2-1/4" Long (1-3/4" OD) | JM0016792 |
| 6 | 1-1/4" Flange Bearing, 4 Hole (GRAF-206) | JM0018560 |
| 7 | 4-1/2" Compression Spring (CMSUAA-4) | JM0018559 |
| 8 | 1/2"-13 Gr2 Z Centerlock Hex Nut | JM0001511 |
| 9 | Top Tube Ball Joint Weldment | JM0078232 |

Flow Control Spout Assembly



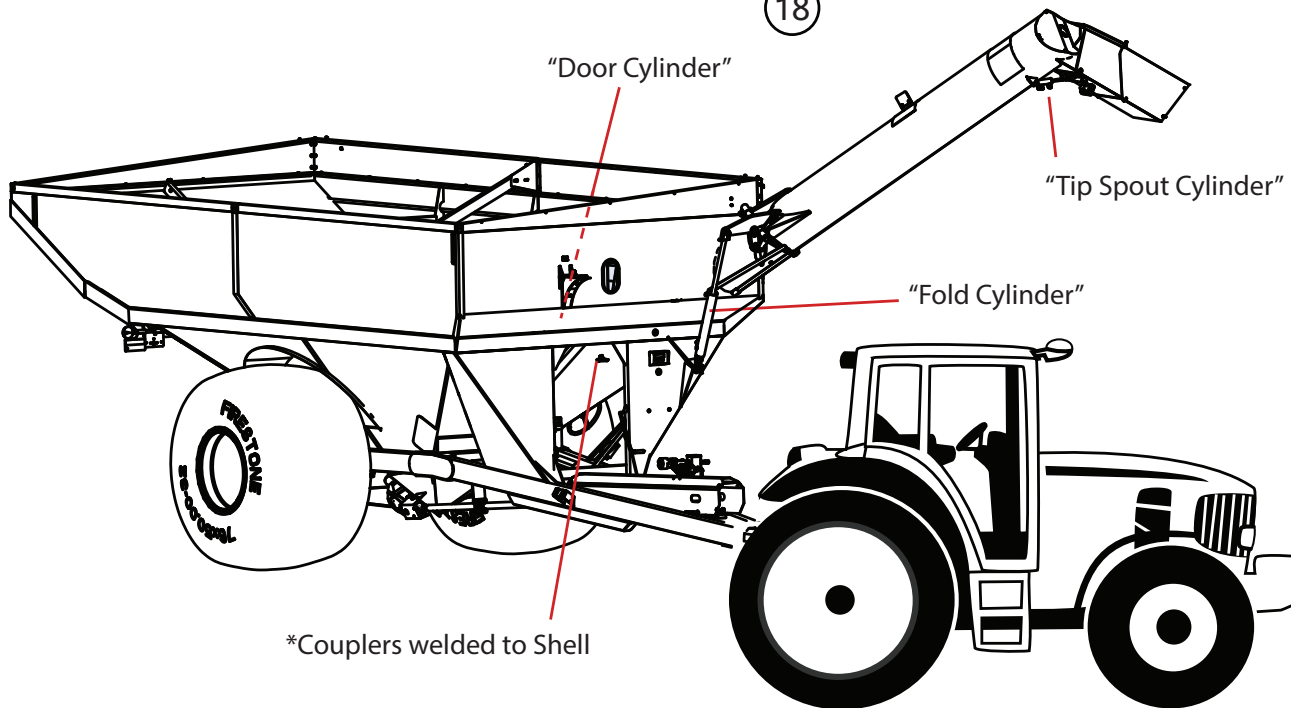
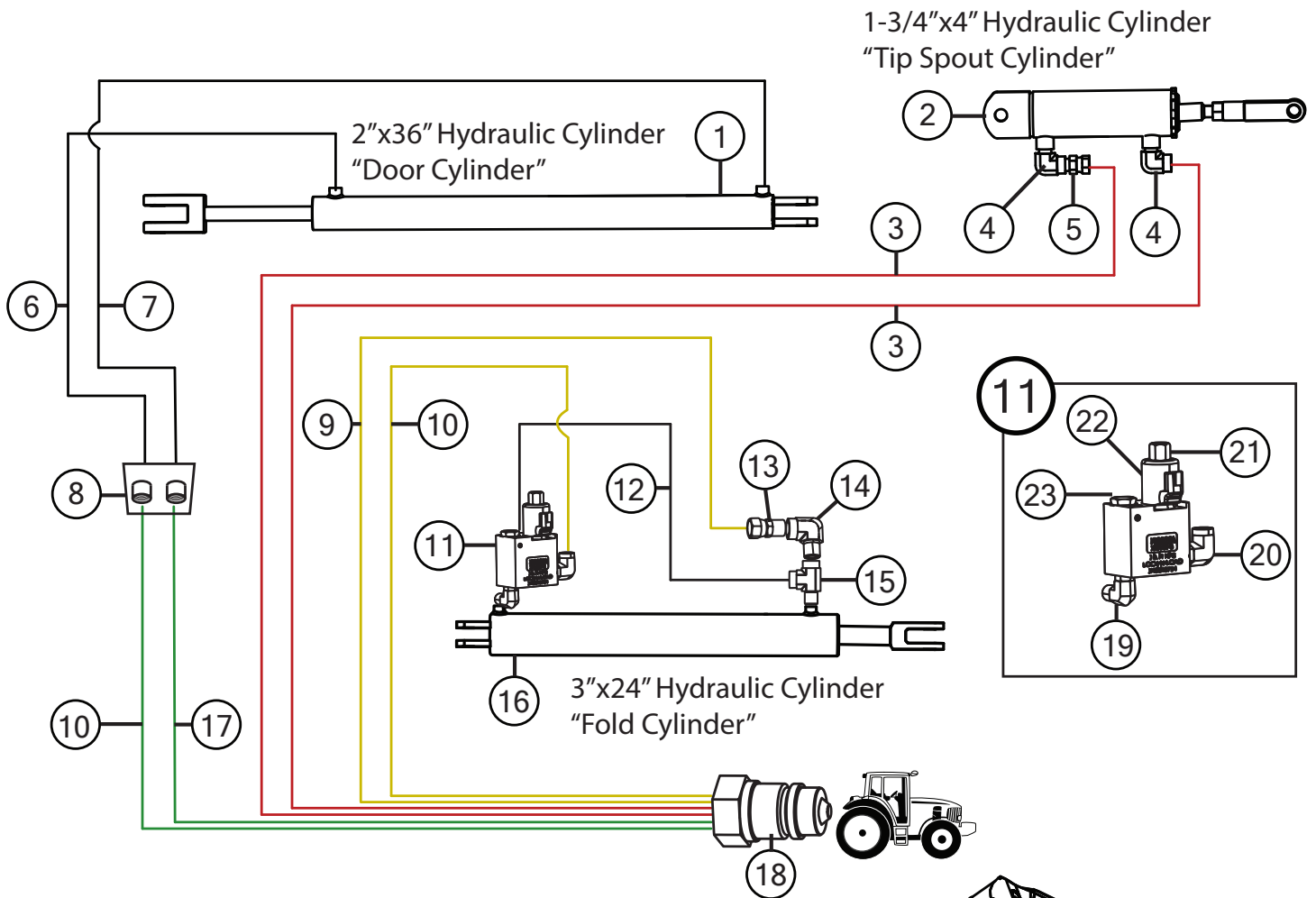
| | Description | Part No. |
|----|---|-----------|
| 1 | 22" Flow Control Spout Weldment (FSH-22NS) (1326, 1401) | JM0018284 |
| 2 | 1/2"-13 x 24" Partially Threaded Stud | JM0018648 |
| 3 | 1/2"-13 Gr2 Z Centerlock Hex Nut | JM0001511 |
| 4 | 22" Baffle Plate (Rectangular) (BP-22NS) | JM0010977 |
| 5 | Hinge for 22" Flow Control Spout (HP-22) | JM0018582 |
| 6 | 1/2"-13 x 2" Gr5 Z Hex Bolt | JM0001593 |
| 7 | 5/32" x 1-1/2" Cotter Pin | JM0014348 |
| 8 | 1/2" x 1-3/4" Clevis Pin, Usable Length 1-1/2" | JM0018264 |
| 9 | 1/4"-20 x 3/4" Gr5 Z Hex Bolt | JM0001507 |
| 10 | 1/4"-20 Gr2 Z Centerlock Hex Nut | JM0001505 |

Lock and Load Switch Assembly



| | Description | Part No. |
|---|---|-----------|
| 1 | M5-0.8 x 12 Gr8.8 Z Hex Bolt | JM0036046 |
| 2 | Limit Switch for Lock and Load (72" Long Cable) | JM0046717 |
| 3 | 0.53125 to 0.59375 Bolt Hose Clamp - SS | JM0046697 |
| 4 | S-Cap Yellow - 1/2" ID x 1-1/4" x 0.065" (REC-1) | JM0016842 |
| 5 | Lock and Load Switch Trigger (2.281 O.D. x 1.438) | JM0044793 |
| 6 | 0.72OD, 3" Free Length, 0.059 Wire Compression Spring | JM0045011 |





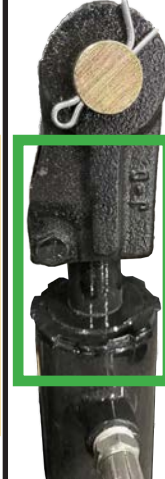

Hydraulic Hoses & Cylinders



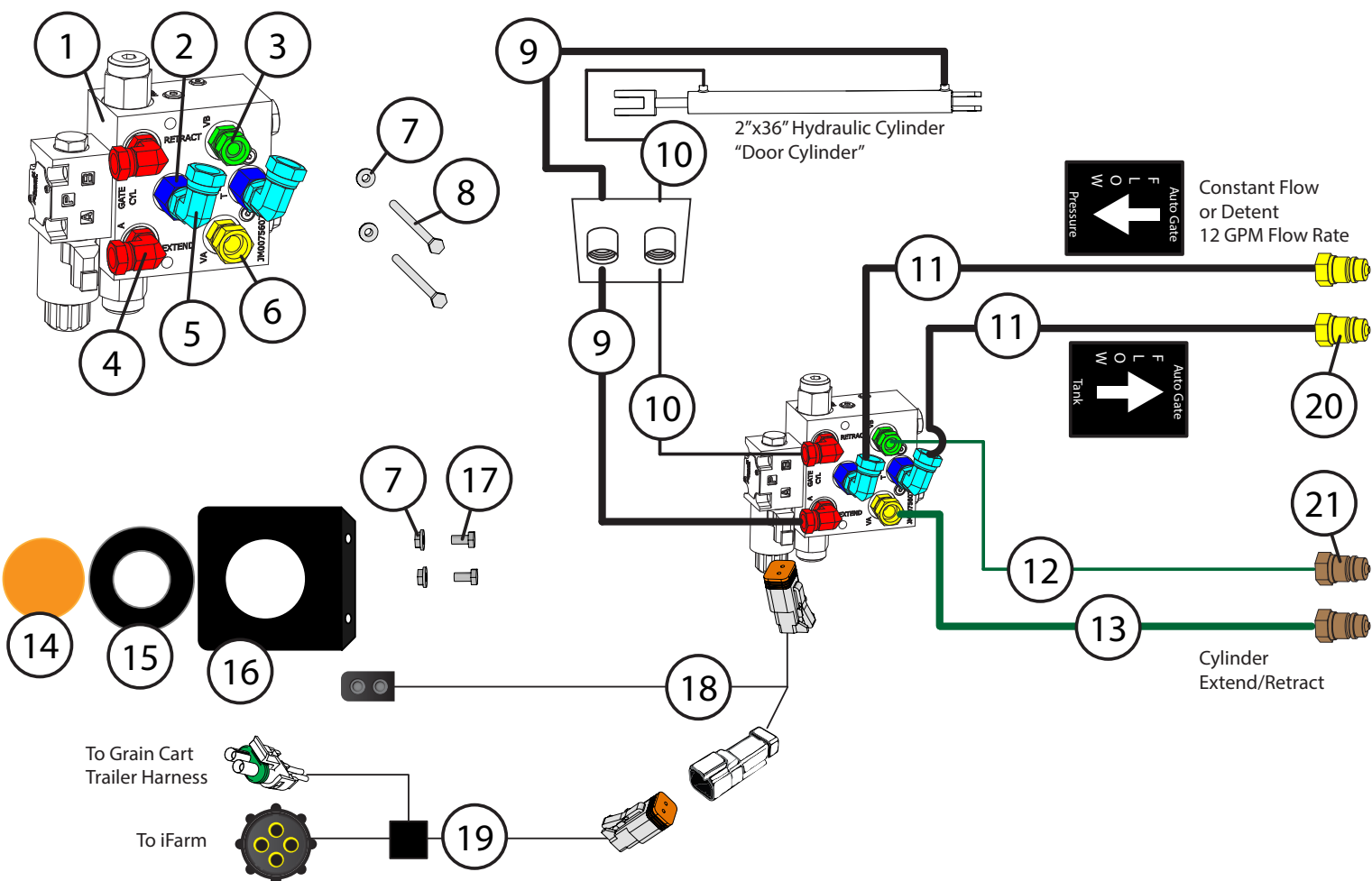
Hydraulic Hoses & Cylinders

| | Description | Part No. |
|----|---|-----------|
| 1 | 2" x 36" Hydraulic Cylinder (JD236) | JM0018523 |
| 1 | Seal Kit for 2" x 36" Hydraulic Cylinder (JD472) | JM0026544 |
| 1 | Seal Kit for 2" x 36" Hydraulic Cylinder (20036-SK) | JM0082366 |
| 2 | 1-3/4" x 4" Hydraulic Cylinder (1/2" Clevis and Tab Ends) (HC-FCS) | JM0018564 |
| 2 | Seal Kit for 1-3/4" x 4" Cylinder (SKHC-FCS) (JD459) | JM0024892 |
| 2 | Seal Kit for 1-3/4" x 4" Cylinder (17504S-SK) | JM0082368 |
| 3 | 1/4" x 388" Hydraulic Hose 388inch4M3k-4G-4MP-4G-8MP | JM0024909 |
| 4 | 1/4" Male NPT x 1/4" Female NPT; 90 Degree Elbow | JM0020115 |
| 5 | 1/4" Male NPT-Swivel with .032 Orifice (Restrictor) | JM0020113 |
| 6 | 1/4" x 43" Hydraulic Hose 43inch4M3k-4G-6MPX-4G-6MP | JM0024904 |
| 7 | 1/2" x 43" Hydraulic Hose 43inch8M3k-8G-8MPX-8G-6MP | JM0024906 |
| 8 | 3/8" Standard Coupling | JM0019562 |
| 8 | 1/2" Standard Coupling | JM0020407 |
| 9 | 1/4" x 222" Hydraulic Hose 222inch4M3k-4G-8MP-4G-6MP | JM0047090 |
| 10 | 1/4" x 206" Hydraulic Hose 206inch4M3k-4G-8MP-4G-6MP | JM0047088 |
| 11 | Lock N Load Assembly | JM0048754 |
| 12 | 1/4" x 21" Hydraulic Hose 21inch4M3k-4G-4MP-4G-6MPX | JM0024896 |
| 13 | 3/8" Male NPT x 3/8" Female NPT Swivel with .062 Orifice (Restrictor) | JM0018362 |
| 14 | 3/8" Male NPT x 3/8" Female NPT; 90 Degree Elbow | JM0030059 |
| 15 | 3/8" Male NPT x 3/8" Female NPT x 3/8" Female NPT; Street T | JM0018266 |
| 16 | 3" x 24" x 1-1/2" Welded Cylinder (JD324) | JM0019644 |
| 16 | Seal Kit 3" x 24" Cylinder (JD324-1) (JD480) | JM0037895 |
| 16 | Seal Kit for 3" x 24" Hydraulic Cylinder (30024-SK) | JM0082369 |
| 17 | 1/2" x 206" Hydraulic Hose 206inch8M3k-8G-8MP-8G-8MP | JM0051614 |
| 18 | 1/2" Female NPT x Male Pioneer - High Flow, Cone Style | JM0018254 |
| 19 | 3/8" Male ORB x 3/8" Male NPT; 90 Degree Elbow | JM0047350 |
| 20 | 1/2" Male ORB x 3/8" Female NPT; 90 Degree Elbow | JM0047348 |
| 21 | Solenoid Valve for Lock and Load (Black) | JM0026256 |
| 22 | Solenoid Coil for Lock and Load (Black) | JM0026255 |
| 23 | Check Valve for Lock and Load (Black) | JM0026250 |

Use these images to determine which seal kit you need.

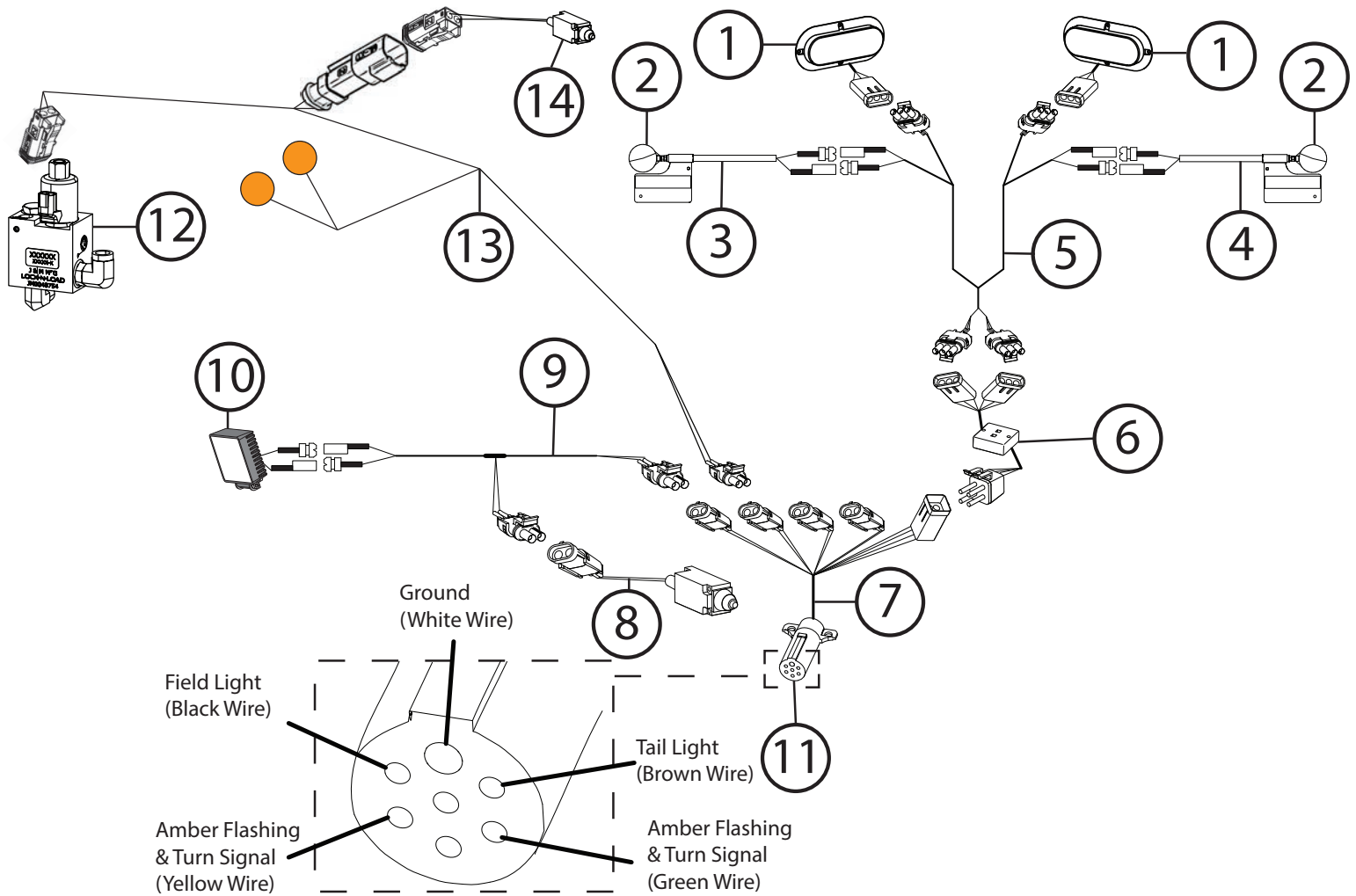
| 1-3/4" x 4" Cylinder | | 3" x 24" Cylinder | | 2" x 36" Cylinder | |
|---|---|---|---|--|---|
| JM0024892 | JM0082368 | JM0037895 | JM0082369 | JM0026544 | JM0082366 |
|  |  |  |  |  |  |

Auto-Gate Shut-Off



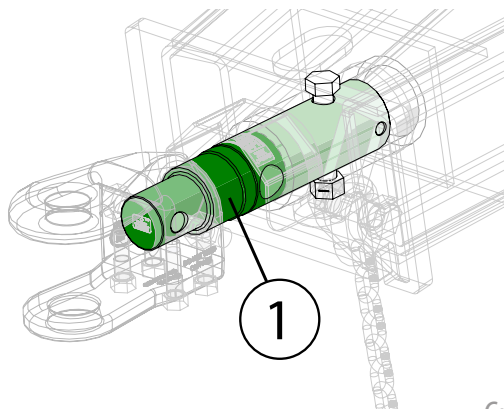
| Description | Part No. |
|--|-----------|
| 1 Auto Gate Control Manifold Assembly (1000 - Higher Single Auger Carts) | JM0080322 |
| 2 #8 Male ORB x #8 Female ORB - Straight | JM0080267 |
| 3 1/2" Male ORB x 3/8" Female NPSM Swivel; Straight | JM0010298 |
| 4 #8 Male ORB Swivel x #6 Female NPSM Swivel - Elbow | JM0080266 |
| 5 1/2" Male ORB x 1/2" Female NPSM Swivel; 90 Degree Elbow | JM0047392 |
| 6 1/2" Male ORB x 1/2" Female NPSM Swivel; Straight | JM0026804 |
| 7 1/4"-20 Gr5 Z SF Hex Nut | JM0001630 |
| 8 1/4"-20 x 3-1/2" Gr5 Z Hex Bolt | JM0046621 |
| 9 1/2" x 43" Hydraulic Hose 43inch8M3k-8G-8MPX-8G-6MP | JM0024906 |
| 10 1/4" x 43" Hydraulic Hose 43 inch 4M3k-4G-6MPX-4G-6MP | JM0024904 |
| 11 1/2" x 236" Hydraulic Hose 236inch8M3k-8G-8MP-8G-8MPX | JM0047376 |
| 12 1/4" x 236" Hydraulic Hose 236inch4M3k-4G-6MPX-4G-8MP | JM0046664 |
| 13 1/2" x 236" Hydraulic Hose 236inch8M3k-8G-8MP-8G-8MPX | JM0047376 |
| 14 2-1/2" Amber Round LED Light/Reflector | JM0001895 |
| 15 Round Grommet for LED 2-1/2" Light/Reflector | JM0001902 |
| 16 3-1/2" Round LED Mount | JM0034956 |
| 17 1/4"-20 x 3/4" Gr5 Z Hex Bolt | JM0001507 |
| 18 Auto Gate Light Harness (LED Light "Y" Cable) | JM0046624 |
| 19 J&M Relay Harness (1 per IFM-GS-1P(auto-gate)) | JM0037374 |
| 20 1/2" Female NPT x Male Pioneer - Low Flow, Ball Style | JM0039220 |
| 21 1/2" Female NPT x Male Pioneer - High Flow, Cone Style | JM0018254 |

Lights and Wiring



| | Description | Part No. |
|----|--|-----------|
| 1 | Red Oval LED Tail Light | JM0034389 |
| 2 | LED Amber Light (Circular) | JM0018819 |
| 3 | Extendable Amber Light Assembly (Left Side) | JM0018817 |
| 4 | Extendable Amber Light Assembly (Right Side) | JM0018826 |
| 5 | Wiring Harness, Rear Half of Grain Cart | JM0020437 |
| 6 | Light Enhancer and Adapter Kit (3 Wires) | JM0010566 |
| 7 | Main Harness with 7-Prong Connector End for Grain Cart | JM0020439 |
| 8 | Limit Switch for Field Light (12T957) | JM0036040 |
| 9 | Field Light Wire (Limit Switch) | JM0048128 |
| 10 | LED Field Light with Bullet Connector | JM0050949 |
| 11 | 7-Prong Connector | JM0010528 |
| 12 | Lock & Load Assembly (1106640) With Check Valve Built In | JM0048754 |
| 13 | Grain Cart Lock and Load Harness with Indicator Lights | JM0044755 |
| 14 | Limit Switch for Lock and Load (72" Long Cable) | JM0046717 |

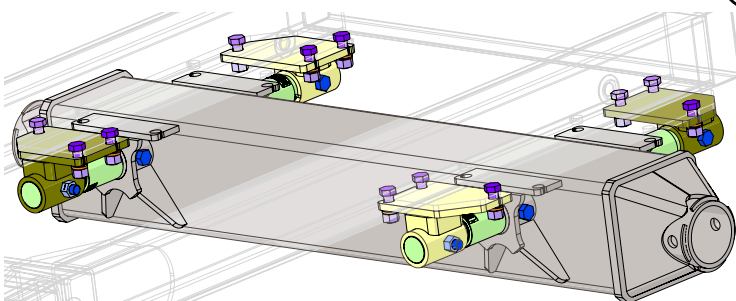
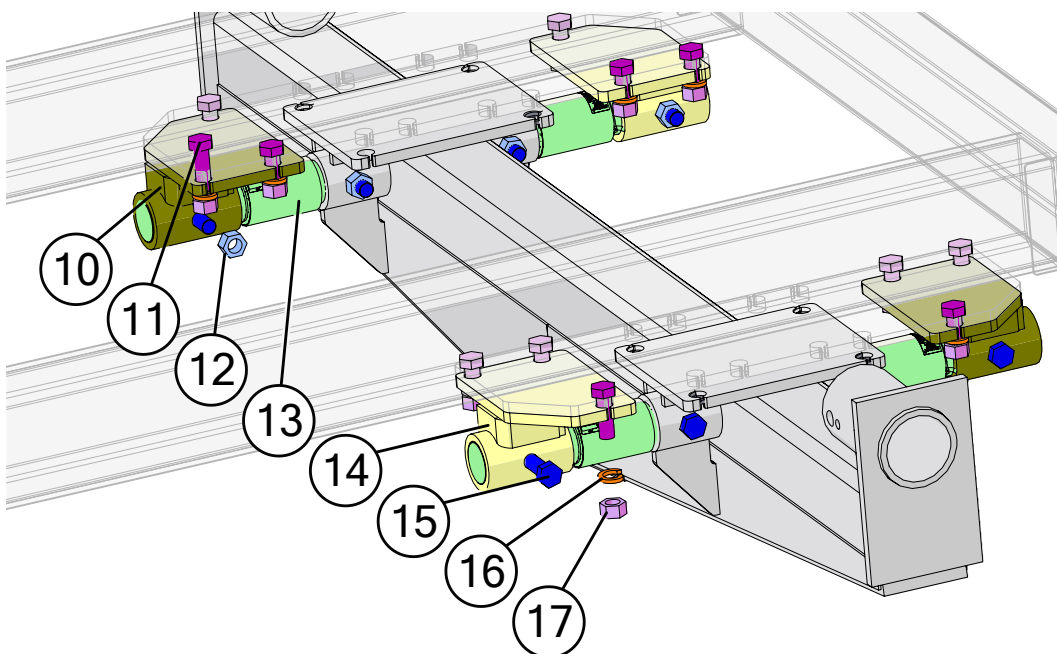
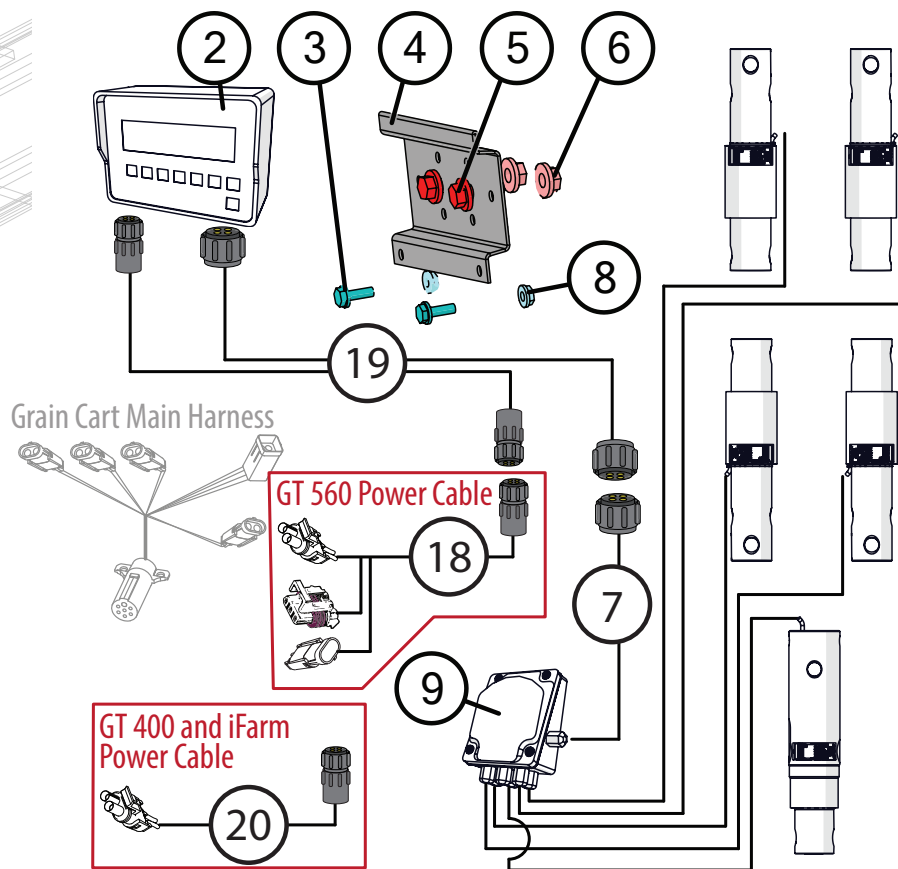
5-Point Scale System for Single Wheel/Tracks



GT 400



GT 560



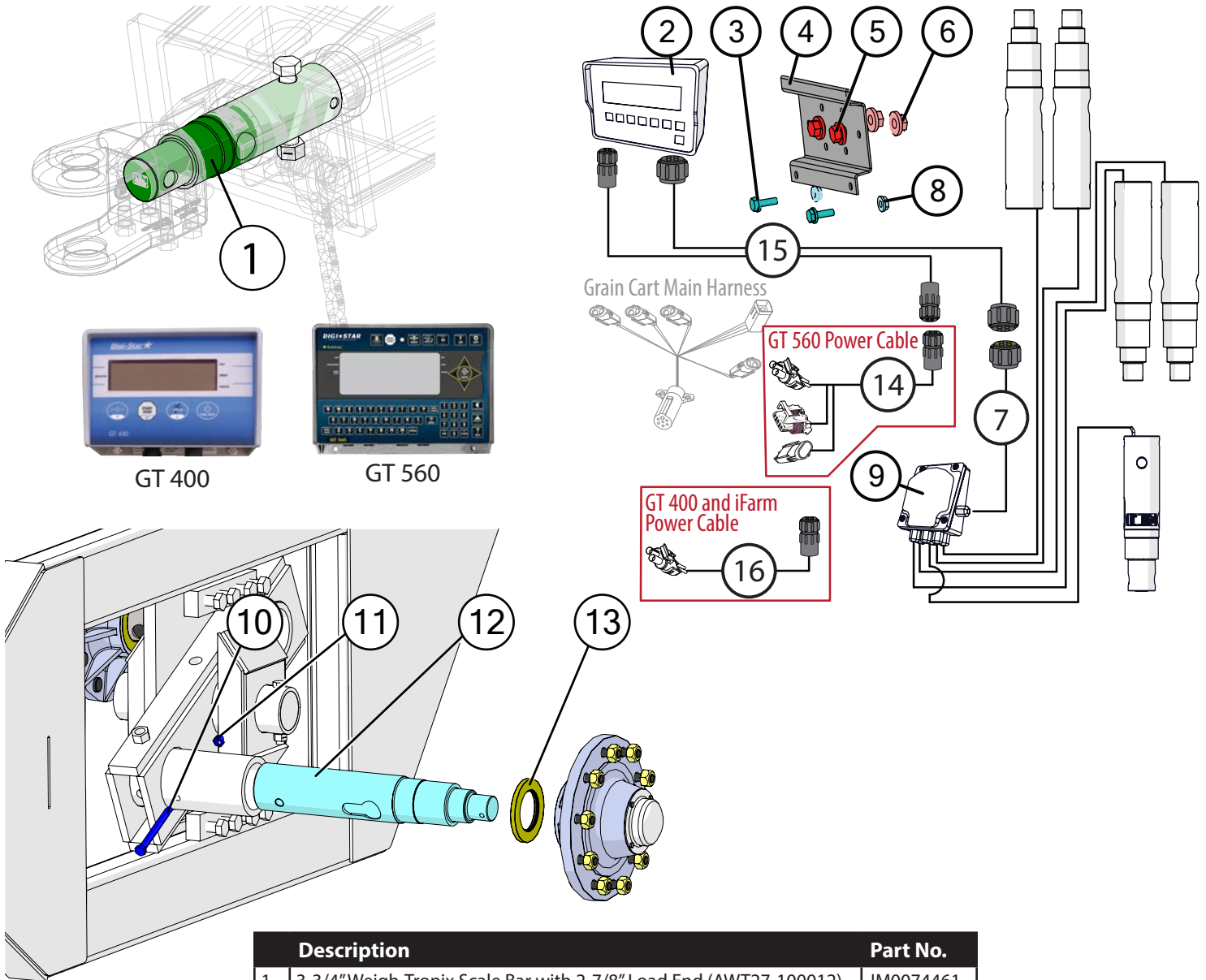
Tracks use all the same hardware and parts just use a different axle.

5-Point Scale System for Single Wheel/Tracks

When there is a conflict, highlighted rows are parts for Avery Weigh-Tronix scale systems.

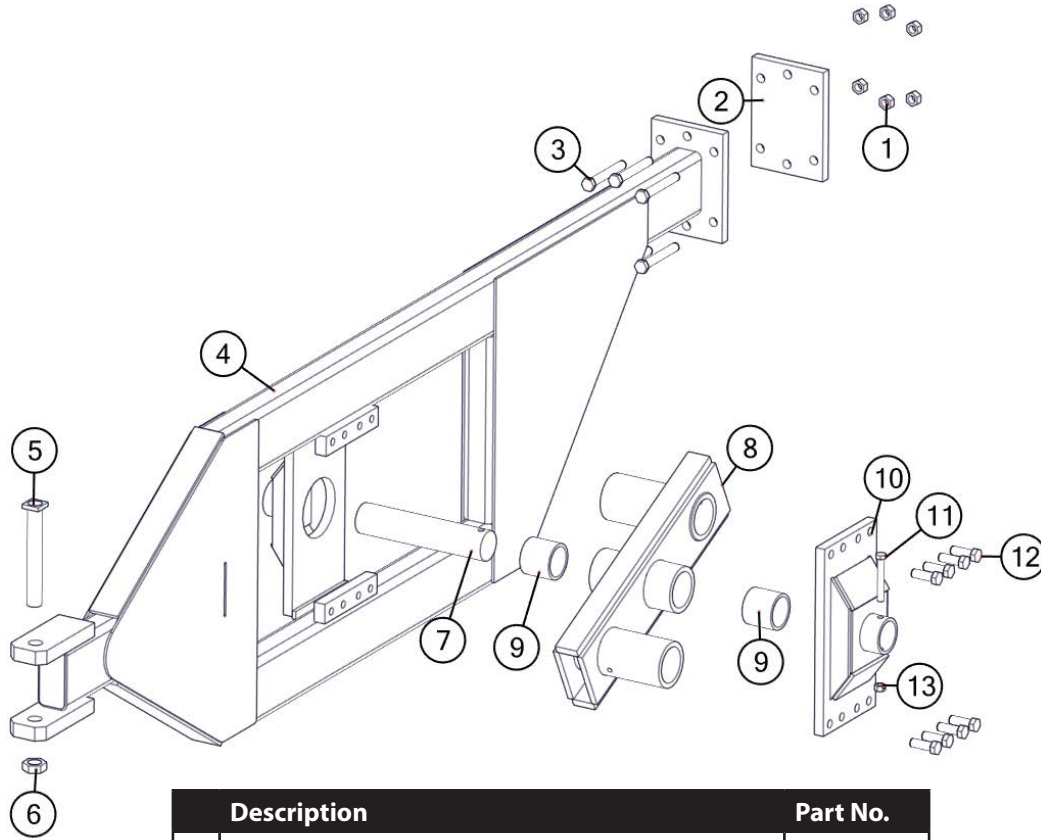
| | Description | Part No. |
|----|---|-----------|
| 1 | 3-3/4" Digi-Star Scale Bar with 2-7/8" Load End | JM0062691 |
| 1 | 3-3/4" Weigh-Tronix Scale Bar with 2-7/8" Load End (AWT27-100012) | JM0074461 |
| 2 | GT 400 Digi-Star Scale Display Monitor | JM0019040 |
| 2 | GT 560 Digi-Star Scale Display Monitor | JM0044177 |
| 3 | 1/4"-20 x 3/4" Gr5 Z Hex Bolt | JM0001507 |
| 4 | GT 400 Scale Monitor Display Bracket | JM0000361 |
| 4 | GT 560 Scale Monitor Display Bracket | JM0046976 |
| 5 | 3/8"-16 x 1" Gr5 Z SF Hex Bolt | JM0002092 |
| 6 | 3/8"-16 Gr5 Z SF Hex Nut | JM0002152 |
| 7 | 8' Cable from J-Box to Indicator (Digi-Star) | JM0047238 |
| 7 | 15' Cable from J-Box to Indicator (Weigh-Tronix) | JM0050445 |
| 8 | 1/4"-20 Gr5 Z SF Hex Nut | JM0001630 |
| 9 | Digi-Star 6-Point Junction Box (JB-5) | JM0019038 |
| 9 | Avery Weigh-Tronix 5-Point Junction Box (JB-5-WT) | JM0019960 |
| 10 | 2-7/8" Weigh Bar Weldment, Rear Left, Front Right (6-1/8" Spool) | JM0000354 |
| 11 | 1"-8 x 3" Gr5 Z Hex Bolt | JM0016686 |
| 12 | 1"-8 Gr2 Z Centerlock Hex Nut | JM0002149 |
| 13 | 2-7/8" Digi-Star Weigh Bar, 1" Pin Hole (278WB-T1) | JM0000355 |
| 13 | 2-7/8" Weigh Bar, Weigh-Tronix (1" Hole) (278WB) | JM0019969 |
| 14 | 2-7/8" Weigh Bar Weldment, Rear Right, Front Left (6-1/8" Spool) | JM0018985 |
| 15 | 1"-8 x 5-1/2" Gr5 Z Hex Bolt | JM0002110 |
| 16 | 1" Zinc Finished Lock Washer | JM0019203 |
| 17 | 1"-8 Gr5 Z Hex Nut | JM0002127 |
| 18 | Power Cable for GT560 Indicator (PC-GT560) | JM0078634 |
| 19 | 30' Extension Cable Kit (Load Cell and Power) (ECI-3) | JM0041218 |
| 20 | iFarm and GT400 Standard Power Cable 18" (74132) | JM0041060 |
| 21 | Flash Drive Memory Stick for Digi-Star GT 560 (114991) | JM0025819 |

5-Point Scale System for Walking Tandem Dual Wheels



| Description | Part No. |
|---|-----------|
| 1 3-3/4" Weigh-Tronix Scale Bar with 2-7/8" Load End (AWT27-100012) | JM0074461 |
| 2 GT 400 Digi-Star Scale Display Monitor | JM0019040 |
| 2 GT 560 Digi-Star Scale Display Monitor | JM0044177 |
| 3 1/4"-20 x 3/4" Gr5 Z Hex Bolt | JM0001507 |
| 4 GT 400 Scale Monitor Display Bracket | JM0000361 |
| 4 GT 560 Scale Monitor Display Bracket | JM0046976 |
| 5 3/8"-16 x 1" Gr5 Z SF Hex Bolt | JM0002092 |
| 6 3/8"-16 Gr5 Z SF Hex Nut | JM0002152 |
| 7 15' Cable from J-Box to Indicator (Weigh-Tronix) | JM0050445 |
| 8 1/4"-20 Gr5 Z SF Hex Nut | JM0001630 |
| 9 Avery Weigh-Tronix 5-Point Junction Box (JB-5-WT) | JM0019960 |
| 10 5/8"-11 x 6-1/2" Gr8 YZ Hex Bolt | JM0050351 |
| 11 5/8"-11 Gr2 Z Centerlock Hex Nut | JM0002146 |
| 12 4-1/2" Weigh-Tronix Weigh Spindle (AWT27-500002) (450WTS) | JM0019970 |
| 13 Seal (4-1/4" ID, 6" OD) for Hub (CR-43771) | JM0018955 |
| 14 Power Cable for GT560 Indicator (PC-GT560) | JM0078634 |
| 15 30' Extension Cable Kit (Load Cell and Power) (ECI-3) | JM0041218 |
| 16 iFarm and GT400 Standard Power Cable 18" (74132) | JM0041060 |
| 17 Flash Drive Memory Stick for Digi-Star GT 560 (114991) | JM0025819 |

Walking Tandem Dual Wheel Assembly

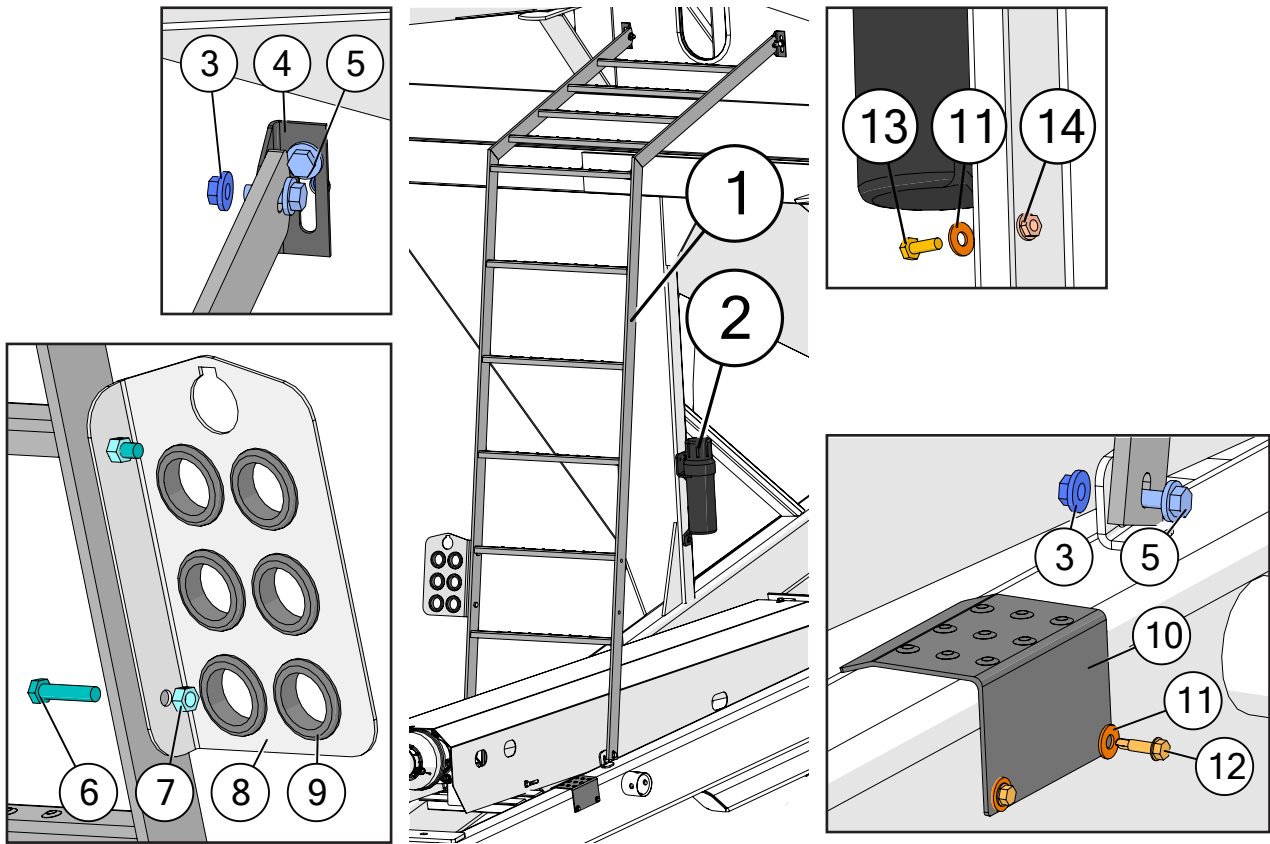


| Description | Part No. |
|---|------------|
| 1 1"-14 Gr8 YZ Hex Nut | JM0019926 |
| 2 1-1/4" x 8" x 14" Walker Frame Clamp Plate (114814CP) | JM0010145 |
| 3 1"-14 x 7-1/2" Gr8 YZ Hex Bolt | JM0019925 |
| 4 Walker Main Frame Weldment (Left) (FW-1L) | JM0019922* |
| 4 Walker Main Frame Weldment (Right) (FW-1R) | JM0010082* |
| 5 1-3/4" x 13-1/2" Bolt (1341312HB) | JM0019981 |
| 6 1-3/4"-12 Z Gr2 Hex Jam Nut | JM0009752 |
| 7 3-3/4" x 17-1/2" Pivot Pin (334PP) | JM0019928 |
| 8 Walker - Triple Pivot Weldment - OAS (PBW-1R) | JM0010170* |
| 8 Walker - Triple Pivot Weldment - AS (PBW-1L) | JM0025721* |
| 9 3-3/4" ID, 4-1/2" OD Bronze Bushing (4" Lg) (BB-334) | JM0010570 |
| 10 Walker Pivot Center Weldment (PCW-1) | JM0010076* |
| 11 3/4"-10 x 5-1/2" Gr5 Z Hex Bolt | JM0015522 |
| 12 1"-14 x 3" Gr8 YZ Hex Bolt | JM0019924 |
| 13 3/4"-10 Gr2 Z Centerlock Hex Nut | JM0002147 |

*-R = Red
 *-B = Blue
 *-G = Green
 *-Y = Yellow
 *-BLK = Black

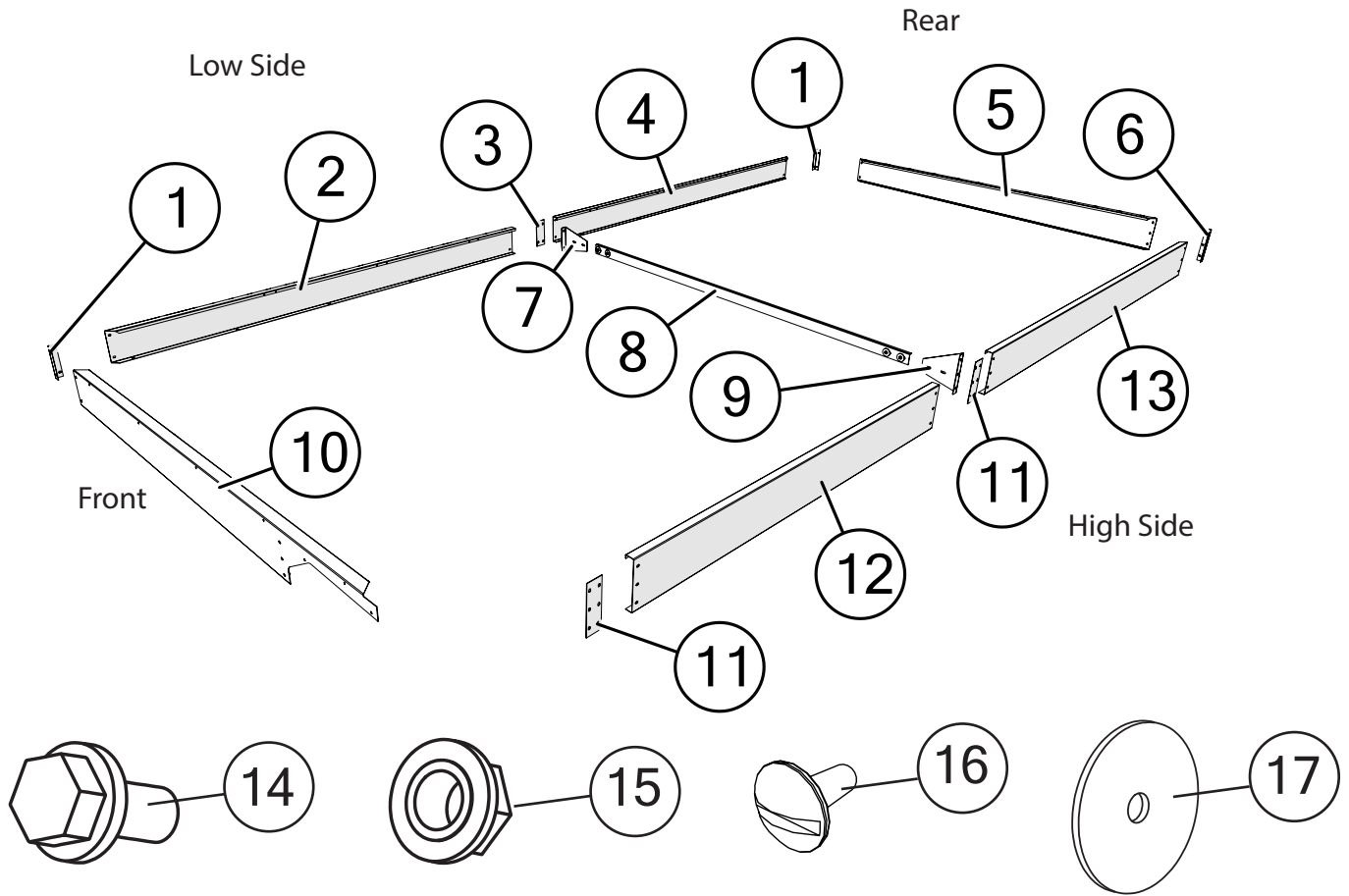
When requesting an item with color, end the part number with -R, -B, -G, -Y, or -BLK. (e.g. JM0000000-R)

Ladder Assembly



| Description | Part No. |
|--|-----------|
| 1 4 Rung Ladder Assembly (LA-1050) | JM0018805 |
| 2 Operator's Manual Canister | JM0010115 |
| 3 3/8"-16 Gr5 Z SF Hex Nut | JM0002152 |
| 4 Universal Ladder Bracket | JM0016922 |
| 5 3/8"-16 x 1" Gr5 Z SF Hex Bolt | JM0002092 |
| 6 3/8"-16 x 1-3/4" Gr5 Z Hex Bolt | JM0002097 |
| 7 3/8"-16 Gr2 Z Centerlock Hex Nut | JM0001512 |
| 8 Hose Holder Bracket for Standard Grain Cart (HHB-1C) | JM0012711 |
| 9 Rubber Grommet (1-1/2" ID, 2-1/8" OD, 3/16" Gap) | JM0016924 |
| 10 Small Step on Grain Cart Frame | JM0028444 |
| 11 1/4" ID, 3/4" OD Z Flat Washer | JM0003090 |
| 12 1/4" x 1" Self Tapping Screw | JM0001716 |
| 13 1/4"-20 x 3/4" Gr5 Z Hex Bolt | JM0001507 |
| 14 1/4"-20 Gr5 Z SF Hex Nut | JM0001630 |

Sideboards

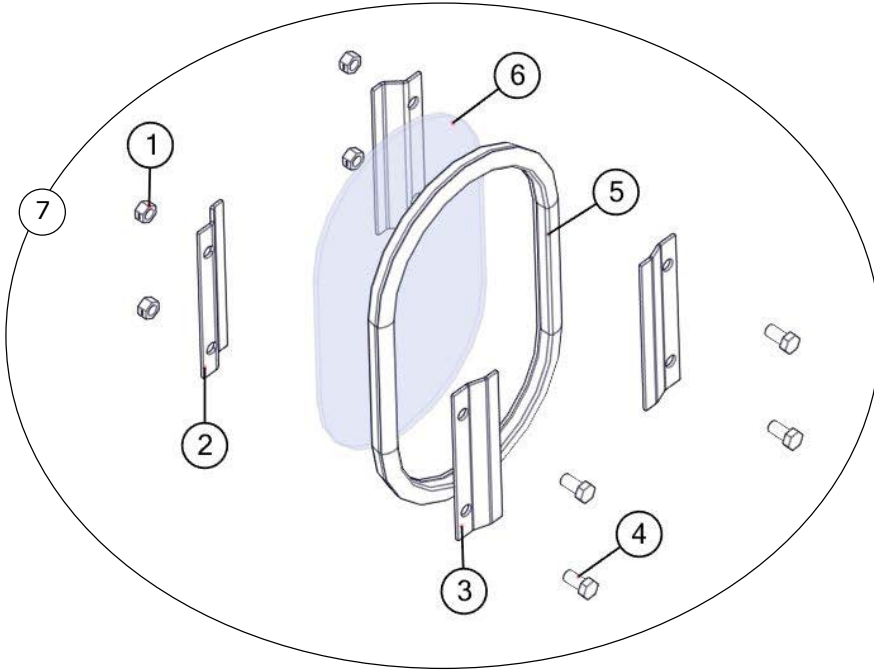


| Description | Part No. |
|---|------------|
| 1 Low Sideboard Corner 10" (1412, 1401, 1432) | JM0020613 |
| 2 Front Low Sideboard 153" x 10-1/4" (1412, 1401) | JM0020609* |
| 3 Low Sideboard Splice 10" x 4" (1412, 1401, 1432) | JM0020614 |
| 4 Back Low Sideboard 153" x 10-1/4" (1412, 1401) | JM0020606* |
| 5 Back Endboard 141" x 13" (1412, 1401) | JM0020605* |
| 6 High Sideboard Corner 13" (1312, 1412, 1522, 1326, 1401) (TTE-1325HSC) | JM0009700 |
| 7 Low Sideboard Brace End 9-1/2" (1412, 1401) | JM0020611 |
| 8 Sideboard Brace 135" (1012, 1112, 1412, 1000-1151, 1401) | JM0020624 |
| 9 High Sideboard Brace End 12-1/2" (1312, 1412, 1326, 1401) | JM0021202 |
| 10 1401 Front Endboard | JM0020608* |
| 11 High Sideboard Splice 13" x 4" (1312, 1412, 1522, 1326, 1401) (TTE-1325HSP) | JM0009702 |
| 12 Front Half High Sideboard 117" x 13-1/4" (1326, 1401) | JM0017349 |
| 13 Back Half High Sideboard 153" x 13-1/4" (1312, 1412, 1522, 1326, 1401) (TTE-1325HSR) | JM0017484* |
| 14 3/8"-16 Gr5 Z SF Hex Nut | JM0002152 |
| 15 3/8"-16 x 1" Gr5 Z Pan Head Bolt | JM0002892 |
| 16 7/16" ID x 2-1/2" OD x 1/8" Z USS Flat Washer | JM0018982 |

*-R = Red
 *-B = Blue
 *-G = Green
 *-Y = Yellow
 *-BLK = Black

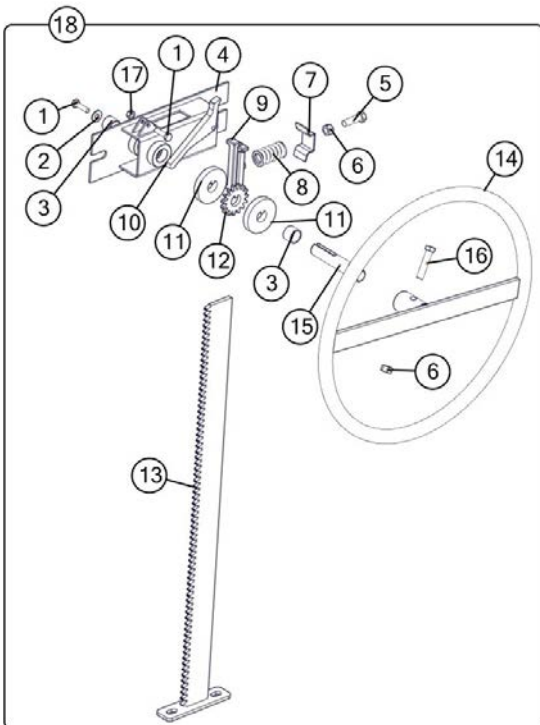
When requesting an item with color, end the part number with -R, -B, -G, -Y, or -BLK. (e.g. JM0000000-R)

Inspection Windows



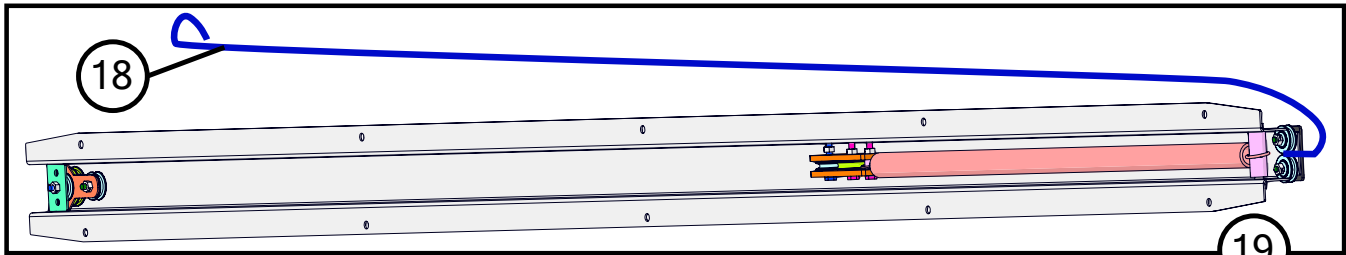
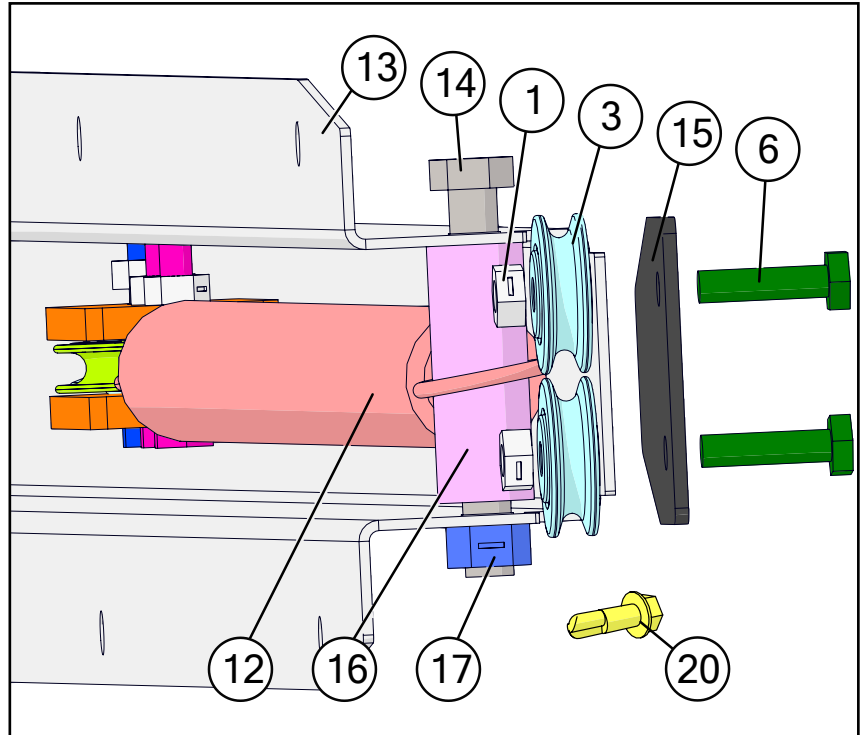
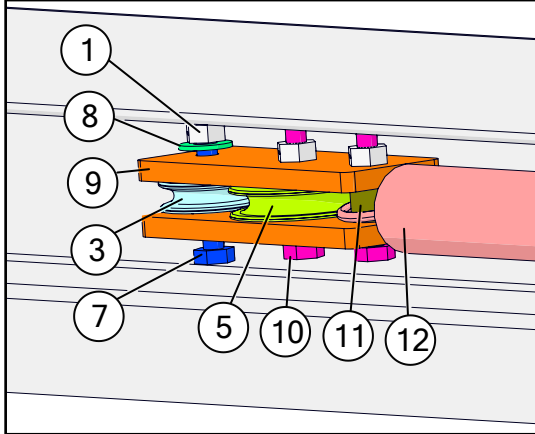
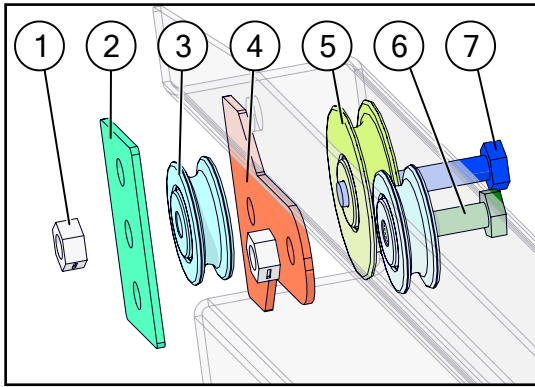
| Description | Part No. |
|------------------------------------|-----------|
| 1 3/8"-16 Gr2 Z Centerlock Hex Nut | JM0001512 |
| 2 Inside Window Clip - Deep | JM0000253 |
| 3 Outside Window Clip - Shallow | JM0000256 |
| 4 3/8"-16 x 3/4" Gr5 Z Hex Bolt | JM0001663 |
| 5 Window Seal 3/4" S' Strip | JM0000254 |
| 6 Standard Inspection Window | JM0000255 |
| 7 Inspection Window Kit | JM0025752 |

Door Wheel Assembly



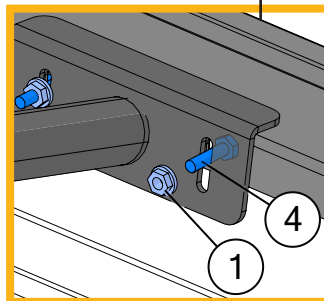
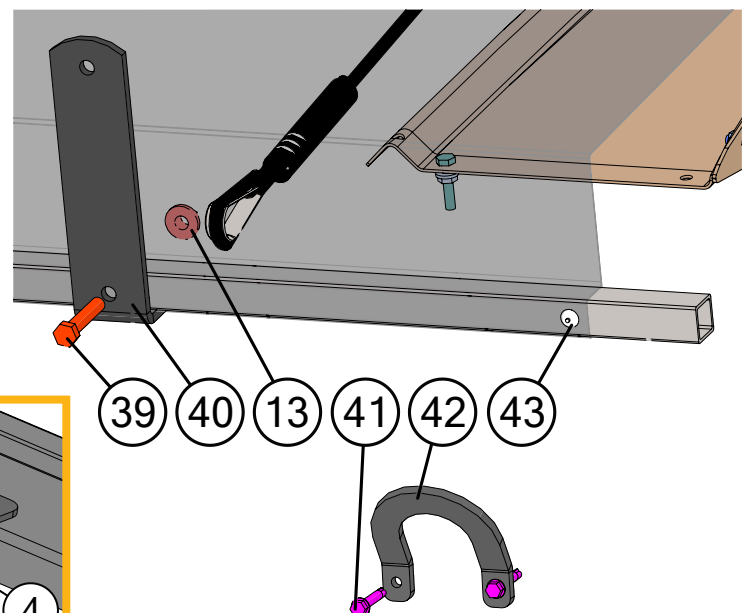
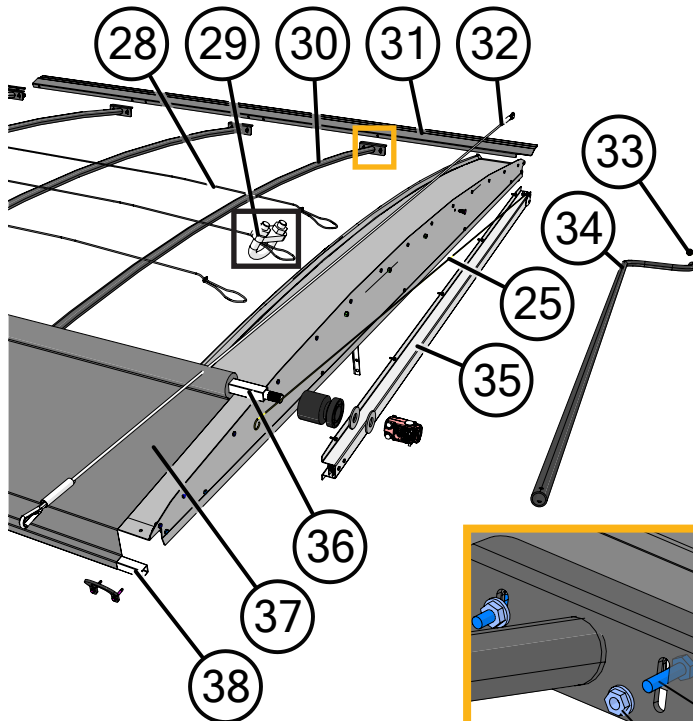
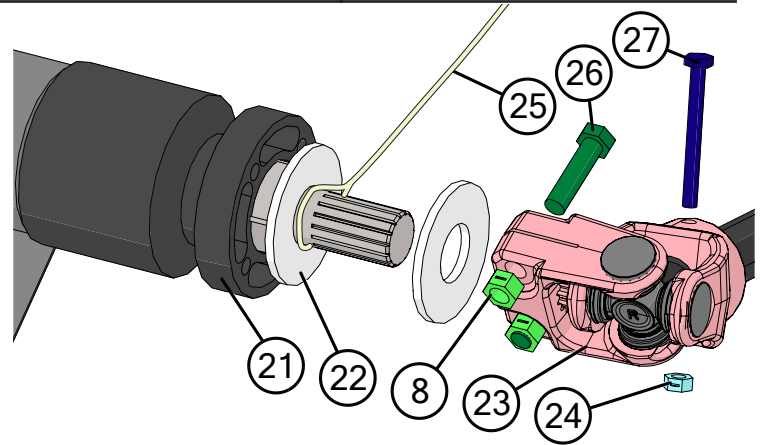
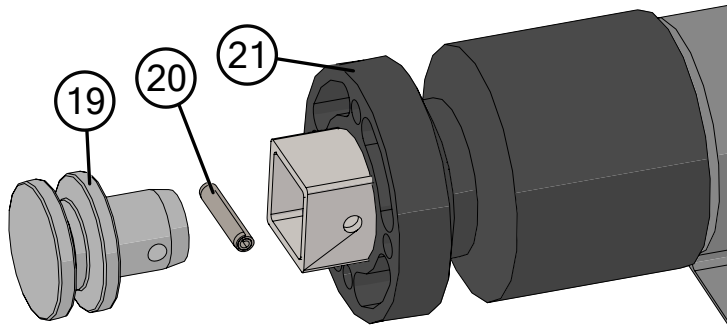
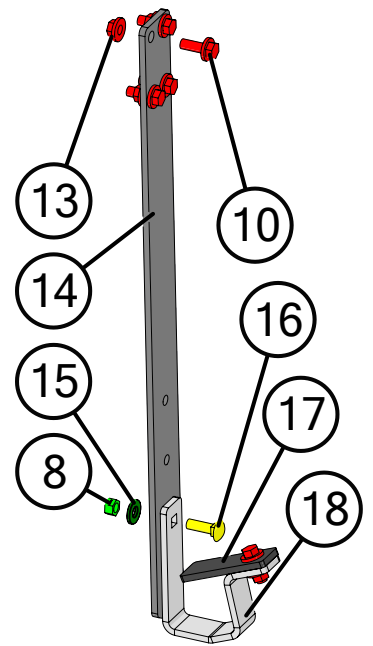
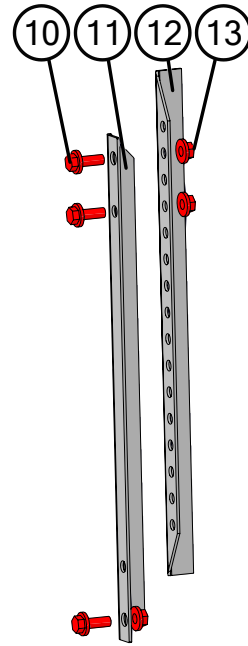
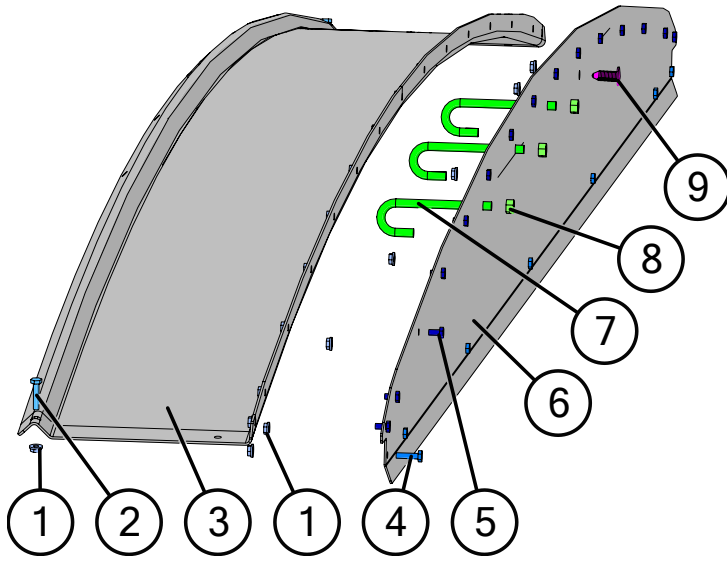
| Description | Part No. |
|---|-----------|
| 1 1/4"-20 x 1" Gr5 Z Hex Bolt | JM0002095 |
| 2 1/4" ID, 3/4" OD Z Flat Washer | JM0003090 |
| 3 3/4" ID x 7/8" OD x 5/8" LG Bronze Bushing (BB-34) | JM0009455 |
| 4 Nylon Guided Rack Housing Weldment (2015 & Newer) | JM0030635 |
| 5 3/8"-16 x 1-1/4" Gr5 Z Hex Bolt | JM0016675 |
| 6 3/8"-16 Gr5 Z Hex Nut | JM0001707 |
| 7 Scrubber Spring Plate (ST Manual Door) (Door Wheel) | JM0002851 |
| 8 Compression Spring (1" x 1-3/4") for Door Assembly & Tongue Latch | JM0001688 |
| 9 Nylon Track Guide For Door Wheel (2015 & Newer) | JM0029354 |
| 10 Flip Lock For Door Rack (2015 & Newer) | JM0029459 |
| 11 Keyway Washer for Door Rack (2015 & Newer) | JM0029454 |
| 12 15 Tooth Sprocket - 3/4" Bore w/ Key (2015 & Newer) | JM0029455 |
| 13 Rack Track Weldment for Door (27-1/2") 2015 & Newer | JM0030634 |
| 14 Rack Wheel Weldment (2015 & Newer) | JM0028897 |
| 15 Stub Shaft 3/4" x 4-1/8" w/ Threaded End (2015 & Newer) | JM0029440 |
| 16 3/8"-16 x 1-3/4" Gr5 Z Hex Bolt | JM0002097 |
| 17 1/4"-20 Gr2 Z Centerlock Hex Nut | JM0001505 |
| 18 Complete Door Wheel Assembly (27-1/2") (2016 & Newer) | JM0029460 |

Spring Return Assembly



| Description | Part No. |
|--|-----------|
| 1 1/4"-20 Gr2 Z Centerlock Hex Nut | JM0001505 |
| 2 Aluminum Spacer for Spring Return (1-3/8" x 2-3/16") Rectangular | JM0002445 |
| 3 1-1/4" Idler Pulley (1/4" ID) | JM0002439 |
| 4 Large Spring Return Pulley Spacer (2 Holes) | JM0018897 |
| 5 1-5/8" Idler Pulley (Long Spring Return) | JM0012970 |
| 6 1/4"-20 x 1" Gr5 Z Hex Bolt | JM0002095 |
| 7 1/4"-20 x 1-1/2" Gr5 Z Hex Bolt | JM0002447 |
| 8 1/4" ID, 3/4" OD Z Flat Washer | JM0003090 |
| 9 Rectangular Plastic Spacer for Spring Return | JM0012973 |
| 10 1/4"-20 x 1-1/4" Gr5 Z Hex Bolt | JM0016673 |
| 11 2" Black Plastic Spacer (1/4" ID x 1/2" OD) | JM0002442 |
| 12 Spring Return Spring | JM0000207 |
| 13 Spring Return Housing for Grain Cart Roll Tarp | JM0012974 |
| 14 3/8"-16 x 3" Gr5 Z Hex Bolt | JM0001666 |
| 15 Spring Return Stiffening Plate | JM0034548 |
| 16 3/4" x 2" Plastic Spacer | JM0002444 |
| 17 3/8"-16 Gr2 Z Centerlock Hex Nut | JM0001512 |
| 18 Spring Return Cable (Grain Carts) | JM0012981 |
| 19 Spring Return Assembly Complete (Grain Cart) | JM0002911 |
| 20 1/4" x 3/4" Self Tapping Screw | JM0001570 |

Roll Tarp Assembly



Roll Tarp Assembly

| | Description | Part No. |
|----|--|-----------|
| 1 | 1/4"-20 Gr5 Z SF Hex Nut | JM0001630 |
| 2 | 1/4"-20 x 1-1/4" Gr5 Z Hex Bolt | JM0016673 |
| 3 | Arched Top Endcap for Glide Right - Grain Cart 141-1/2" | JM0044731 |
| 4 | 1/4"-20 x 1" Gr5 Z Hex Bolt | JM0002095 |
| 5 | 1/4"-20 x 1/2" Gr5 Z Hex Bolt | JM0001481 |
| 6 | Endcap Plate for Glide Right - Grain Cart 140-7/8" | JM0045315 |
| 7 | 3/8"-16 Gr5 Z J-Bolt (384JB) | JM0001519 |
| 8 | 3/8"-16 Gr2 Z Centerlock Hex Nut | JM0001512 |
| 9 | 3/8" Ribbed Push in Rivet | JM0037396 |
| 10 | 3/8"-16 x 1" Gr5 Z SF Hex Bolt | JM0002092 |
| 11 | Endcap Prop - Lower 19" (ABS-2) | JM0000179 |
| 12 | Endcap Prop - Upper 19" | JM0021404 |
| 13 | 3/8"-16 Gr5 Z SF Hex Nut | JM0002152 |
| 14 | 1/4" x 2" x 29" Bar with 120° Bend for Crank Handle (1312,1326,1522) | JM0048492 |
| 15 | 1/2"-13 Gr2 Z Centerlock Hex Nut | JM0003061 |
| 16 | Crank Holder (Zinc Plated) (CH-1) | JM0001639 |
| 17 | Roll Tarp - Handle Hanger Rubber Flap | JM0080035 |
| 18 | 1/2" ID 1-3/8" OD Z Flat Washer | JM0081371 |
| 19 | Spool End for Roll Tube | JM0002449 |
| 20 | 1/4" x 1-1/4" HD Spiro Roll Pin | JM0046782 |
| 21 | Roll Tarp Guide Roller | JM0038446 |
| 22 | 1" USS Flat Washer | JM0003063 |
| 23 | Universal Joint - Roll Tarp (SUJ-1) | JM0001517 |
| 24 | 1/4"-20 Gr2 Z Centerlock Hex Nut | JM0001505 |
| 25 | Spring Return Cable (Grain Carts) | JM0012981 |
| 26 | 3/8"-16 x 1-1/2" Gr5 Z Hex Bolt | JM0001659 |
| 27 | 1/4"-20 x 2-1/2" Gr5 Z Hex Bolt | JM0001506 |
| 28 | 3/16" Cable x 306" (1326, 1401, 1312, 1412, 1522) (316C-1325) | JM0015701 |
| 29 | 3/16" Cable Clamp | JM0025406 |
| 30 | 137" Arched Tarp Bows (Regular) (137ATB) | JM0000157 |
| 31 | Tightening Lip Front 153" (1326, 1401, 1312, 1412, 1522) | JM0017842 |
| 31 | Tightening Lip Rear 153" (1326, 1401, 1312, 1412, 1522) | JM0017843 |
| 32 | Tarp Rope Assembly 14' 8" Glide Right Standard Cart | JM0048662 |
| 33 | S-Cap Yellow - 1.062 ID x 1-1/2" x 1/16 | JM0018963 |
| 34 | 12' Crank Grain Cart (CUJ-1LN) | JM0019888 |
| 35 | Spring Return Assembly Complete (Grain Cart) | JM0002911 |
| 36 | 1-1/4" x 309" Roll Tube for Glide Right (1326, 1401, 1312, 1412, 1522) | JM0048404 |
| 37 | Tarp with Rivets (1326, 1401, 1312, 1412) 25'2"x 13'6" | JM0018966 |
| 38 | 1" x 306" Square Tie-Down Tube (1326, 1401, 1312, 1412, 1522)(1325TT) | JM0018962 |
| 39 | 3/8"-16 x 2" Gr5 Z Hex Bolt | JM0001510 |
| 40 | Tarp Stop Bracket (TSB-1) | JM0000187 |
| 41 | 1/4" x 1-1/2" Self Tapping Screw | JM0001571 |
| 42 | Tarp Rope Bracket | JM0047700 |
| 43 | 1/4" Tarp Rivet | JM0001518 |