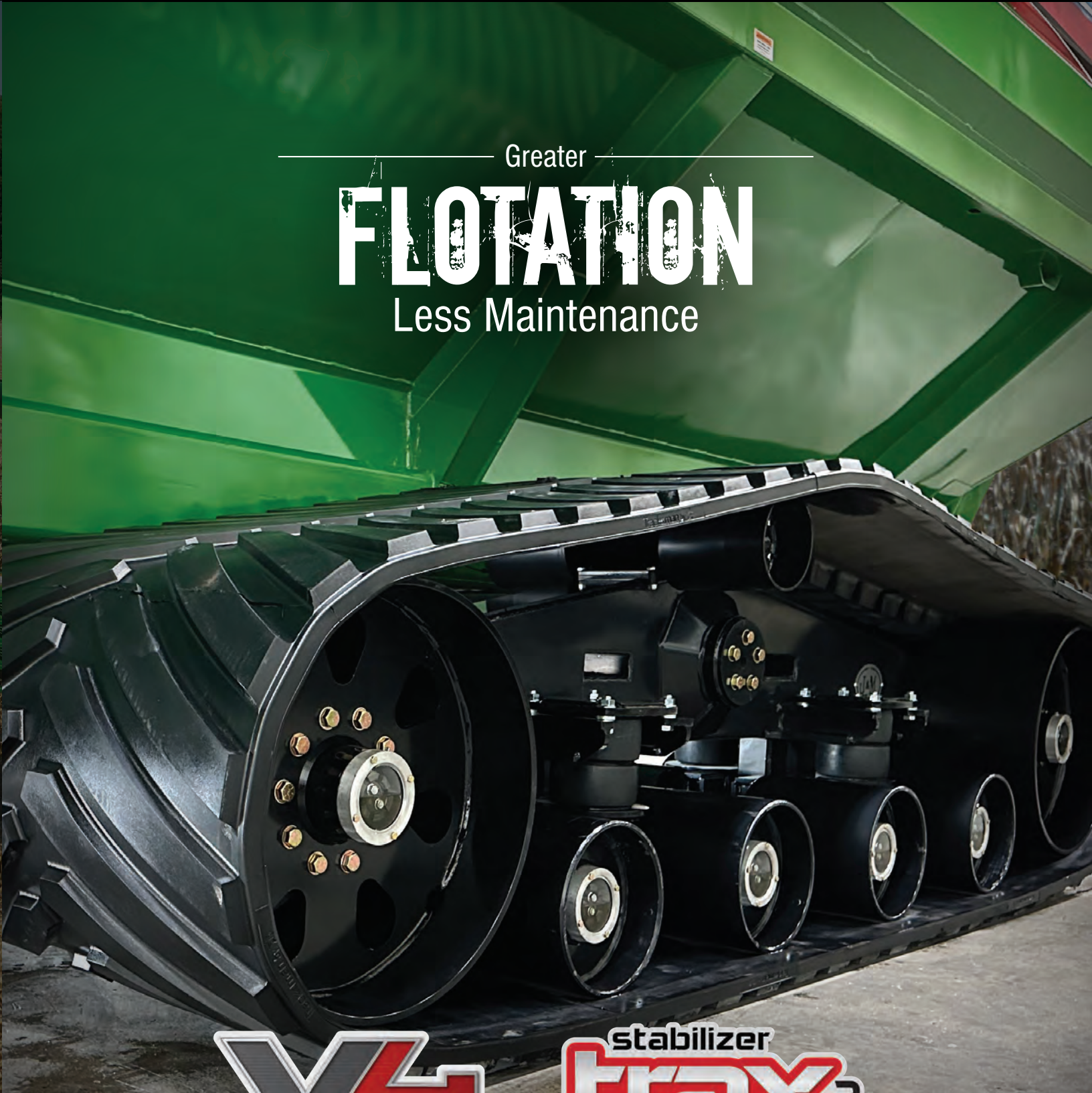




Greater  
**FLOTATION**  
Less Maintenance



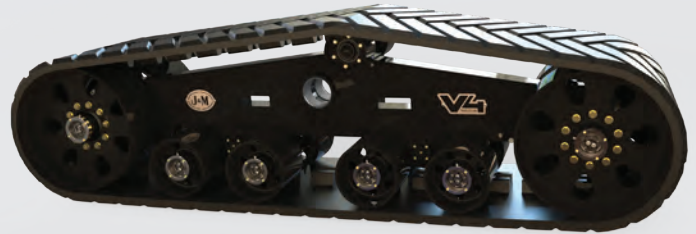
# ADVANTAGES

## J&M TRACK SYSTEMS' ADVANTAGES

### Less Compaction

High-strength steel and optimized geometry deliver the largest footprint to weight ratio in the industry.

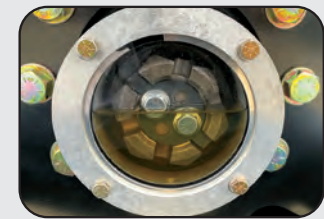
- Pound-for-pound, J&M tracks provide more footprint than competitors, minimizing compaction.
- Less track weight for assembly, transport, and annual maintenance
- Lower profile end wheels allow for more even wheel spacing
  - More uniform ground footprint for better weight distribution



### No Maintenance, No Problem

Virtually maintenance free during day-to-day operations

- Oil bath hubs
  - Multiple seals along with a seal guard provide redundancy for extra protection and better sealing under the harshest conditions
  - Larger bearing sets for longer life
- Self-lubricated sleeve bearings
  - A single greasing before harvest can last the entire season
- Spring tensioner
  - Active tension without the complication of hydraulics
  - No adjustment required



J&M Track Characteristics	Competition Track Characteristics
✓ Industry's largest footprint-to-weight ratio for minimized compaction	✓ Bulky designs with smaller footprints - weigh up to an additional 3,200 lbs
✓ Easier handling during assembly, transport, and annual maintenance	✓ Weighty components require larger lifting equipment whenever handling
✓ Oil bath hubs with large, shatterproof sight windows for level verification at a glance	✓ Grease or oil-bath hubs with little to no lubricant visibility. In muddy conditions, grease hubs require daily greasing
✓ Synthetic oil in hubs for superior bearing protection and excellent cold weather lubricant flow	✓ Conventional oil or grease in hubs yields increased maintenance intervals and poor cold-weather lubricant flow
✓ Self-lubricated sleeve bearings eliminate the need for routine greasing	✓ Pivot locations require daily or weekly greasing or an expensive auto greaser option
✓ Large coil spring provides active tension without the complication of hydraulics (no adjustment needed)	✓ Hydraulic tensioner adds unnecessary complexity and requires additional operator diligence
✓ Sleek design leaves few places for mud and debris to settle	✓ Shields and/or large flat areas accumulate mud and debris
✓ Upper rollers limit unwanted belt movement across upper span	✓ Large, unsupported upper belt span prone to unsightly belt floppiness
✓ Uniform bogie wheel spacing and low pivot locations permit smoother movement over obstacles	✓ Narrow bogie wheel spacing and elevated pivot locations cause rougher pivoting motion



# GROUND PRESSURES



1012	11.9	9.9	9.2	8.1	-
1112	13.0	10.9	10.1	8.8	-
1122	12.9	10.7	9.9	8.7	-
1222	-	11.6	10.8	9.4	-
1312	-	12.2	11.2	9.8	8.9
1412	-	12.7	11.8	10.2	9.3
1522	-	13.3	12.3	10.7	9.7
1132	13.2	11.0	10.2	8.9	-
1432	-	13.2	12.2	10.6	9.6
1732	-	-	13.9	12.0	10.9
2032	-	-	15.9	13.7	12.4
2332	-	-	-	-	13.9

## EVEN WHEEL SPACING RESULTS IN LESS COMPACTION

- Smaller end wheels allow for more uniform bogey wheel spacing, which provides better weight distribution
- Reduces ground pressure highs and lows while also reducing overall ground pressure



# SPECIFICATIONS



Model 36120-V4

36" V4 MT Track Specification	Full Cart
Belt Width	36"
Overall Length	120"
Weight (One Track)	3,950 lbs.
Footprint Dimensions (One Track)	36" x 87.7"
Footprint Area (Both Tracks)	6,310 in <sup>2</sup>
Avg. Ground Pressure with 1,175 Bushel Cart	13.0 psi



Model 36139-V4.2

36" V4 Track Specification	Full Cart
Belt Width	36"
Overall Length	139"
Weight (One Track)	4,700 lbs.
Footprint Dimensions (One Track)	36" x 107.1"
Footprint Area (Both Tracks)	7,710 in <sup>2</sup>
Avg. Ground Pressure with 1,500 Bushel Cart	13.0 psi



Model 36150-STX2/36150-STX2-7

36" STX Track Specification	Full Cart
Belt Width	36"
Overall Length	150"
Weight (One Track)	5,430 lbs
Footprint Dimensions (One Track)	36" x 117.8"
Footprint Area (Both Tracks)	8,480 in <sup>2</sup>
Avg. Ground Pressure with 1,500 Bushel Cart	12.3 psi



Model 42150-STX2/42150-STX2-278

42" STX Track Specification	Full Cart
Belt Width	42"
Overall Length	150"
Weight (One Track)	6,000 lbs.
Footprint Dimensions (One Track)	42" x 117.8"
Footprint Area (Both Tracks)	9,900 in <sup>2</sup>
Avg. Ground Pressure with 1,500 Bushel Cart	10.7 psi



Model 46155-STX2

46" STX Track Specification	Full Cart
Belt Width	46"
Overall Length	154.9"
Weight (One Track)	7,400 lbs.
Footprint Dimensions (One Track)	46" x 121.4"
Footprint Area (Both Tracks)	11,170 in <sup>2</sup>
Avg. Ground Pressure with 1,500 Bushel Cart	9.7 psi

# STABILIZER TRAX2



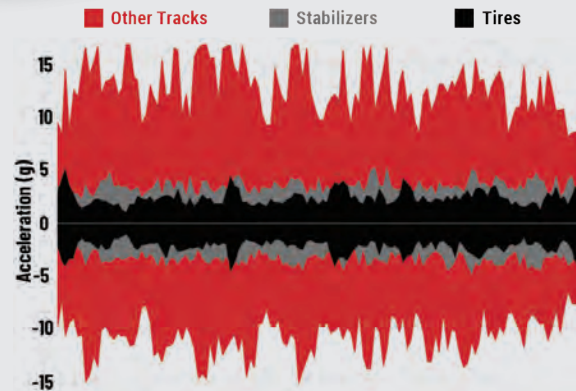
## STABILIZER TRAX2 SYSTEM

### Longer Tank Life... Less Maintenance

The industry's premier track offering, J&M's Stabilizer tracks include all the great features found on J&M's standard tracks plus J&M's patented track suspension system.

### 3x Less Vibration Than Other Track Systems And Similar Vibration To An Implement On Tires

- Reduced vibration is especially important for large, sheet-metal structures like grain carts
- Longer cart life and a smoother ride
- "Rides like a tire, floats like a track"



Graph above shows the vibration of tires, other tracks and Stabilizer Trax2.

The Stabilizer Trax2 are very similar to a tire.

### Independently Suspended, Oscillating Bogie Wheels

- 14° front to back
- 7° side-to-side



### Load-Adjusted End Wheel Height

- End wheels raised under light load
  - Reduced tread bar wear
  - Less turning force
  - Climb over uneven terrain more easily
- End wheels lowered with increasing load
- Entire track footprint is utilized, minimizing compaction



UNLOADED CART



LOADED CART





**V4**  
TRACK SYSTEM

stabilizer  
**trax<sup>2</sup>**

